

High Voltage Trimmers



CHARACTERISTICS

- Rated voltage: 1250 VDC - test voltage 2500 VDC (52H02)
1000 VDC - test voltage 2000 VDC (55H01) (55H02) (80H85)
- Q >1400@ 195 MHz (52H02)
- Q >1000@ 175 MHz (55H01) (55H02) (80H85)
- Insulation resistance: >10⁶ MΩ
- Operating temperature range: -65°C to +125°C
- Torque: 1 to 10 oz. in.
- Contact resistance: <.01 Ω
- Additional terminal configurations available. Contact facility

RECOMMENDED TUNING TOOL

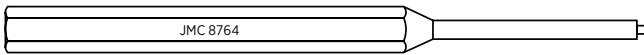


FIGURE 1

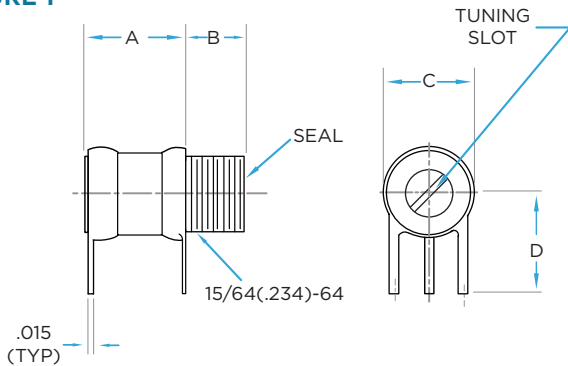


FIGURE 2

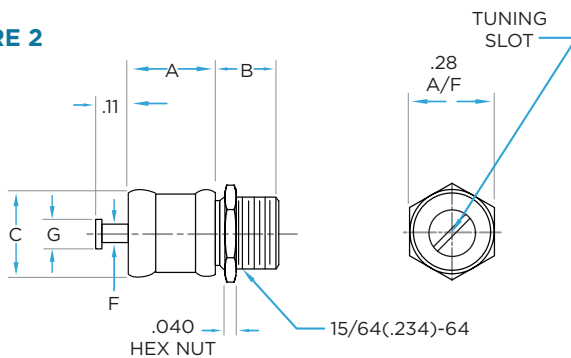
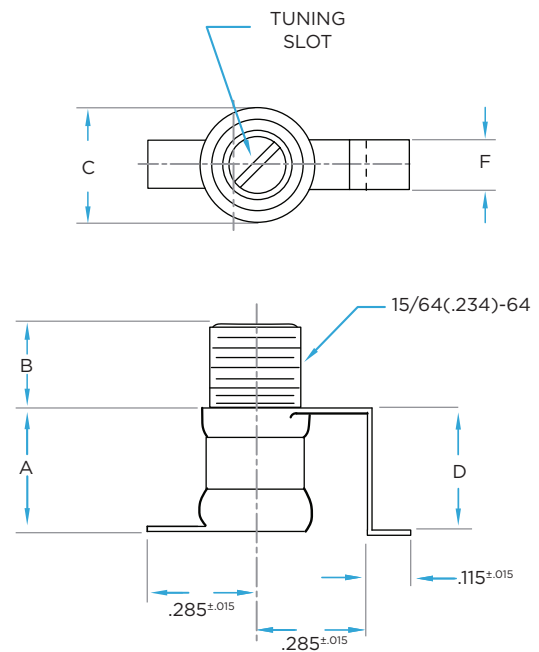


FIGURE 3



Part Number	Capacitance Range (pF)	Min. Q @ 100 MHz	Dimensions							Figure
			A	B	C	D	E	F	G	
52H01	1.5 to 10.0	>1400*	0.31	0.22	.295/.275	0.31	-	-	-	1
52H02						-				
55H01	1.5 to 19.0	>1000	0.31	0.22	.295/.275	0.31	-	-	-	1
55H02	1.5 to 19.0	>1000	0.31	0.22	.295/.275	-	-	0.06	0.09	2
80H85	1.5 to 19.0	>1000	0.31	0.22	.295/.275	0.32	-	0.125	-	3

Notes: Dimensions (inches). *Q @ 195MHz.

