

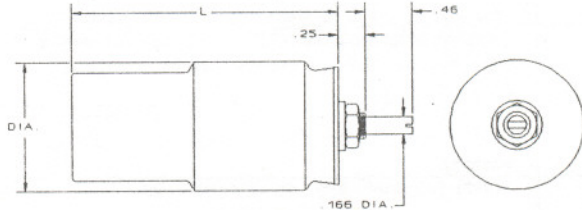
# POLYFLON DESIGN DATA

## RF Variable Capacitors (0.8 - 125 pF)

- Non-Magnetic • High Voltage • High Power • High "Q"
- Screwdriver Adjust Non-Rotating Piston Series

### NRP Series

Capacitance Range	0.8 - 125pF
Working Voltage	To 10Kv
Dielectric Strength	200% of working voltage
Quality Factor (Q)	5000 or greater
Insulation Resistance	10 <sup>6</sup> Megohms
Operating Temperature	-55° C to 125° C
Temperature Coefficient	50 ppm/ <sup>o</sup> C
Tuning Torque	4 inch ounces (max.)



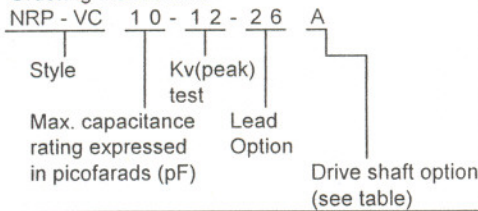
#### Design

PTFE anode and mount surfaces are metalized with electrodeposited copper. Polyflon's proprietary plating process eliminates the possibility of air being trapped between the PTFE and copper interface which could break down under voltage stress.

#### Notes

- 1 Working volts and maximum RMS current must not occur simultaneously.
- 2 Peak test voltage rating may be used for pulsed voltage applications. Peak pulsed current will be limited by the duty cycle that will provide an average current that does not exceed the maximum RMS current.
- 3 Mounting dimensions: 1/4" diameter "D" hole. Hardware: 1/4"-32 hex nut and internal tooth lockwasher. Mounting flange is at the bottom of the capacitor.

#### Ordering Instructions



PART NUMBER	Capacitance Range (pF)	Peak (Kv) Working Volts	Peak (Kv) Test Volts	Max. (RMS) Current (amps)	Dimensions/inch (mm)		Wt./Ounces (Approx.)
					L(+/- .020")	Dia.(+/- .020")	
NRP - VC5 - 10 -*	0.8 - 5	5	1 0	2.30	1.560 (39.5)	0.500 (12.7)	0.40
NRP - VC10 - 12 -*	0.8 - 10	6	1 2	3.60	1.830 (46.5)	0.625 (15.9)	0.80
NRP - VC25 - 6 -*	5 - 25	3	6	5.70	1.620 (41.4)	0.910 (23.1)	1.25
NRP - VC25 - 6B -*	5 - 25	3	6	4.20	1.620 (41.4)	0.625 (15.9)	1.25
NRP - VC25 - 15 -*	5 - 25	1 0	1 5	7.20	1.770 (45.0)	1.125 (28.6)	2.00
NRP - VC30 - 6 -*	3 - 30	3	6	10.00	2.250 (57.2)	1.500 (38.1)	4.00
NRP - VC50 - 6 -*	5 - 50	3	6	12.50	2.250 (57.2)	1.500 (38.1)	3.50
NRP - VC50 - 15 -*	5 - 50	1 0	1 5	15.00	2.515 (63.9)	1.625 (41.3)	4.00
NRP - VC70 - 15 -*	5 - 70	1 0	1 5	20.00	3.250 (82.6)	1.625 (41.3)	4.50
NRP - VC85 - 6 -*	5 - 85	3	6	20.00	3.250 (82.6)	1.500 (41.3)	4.10
NRP - VC90 - 6 -*	5 - 90	3	6	10.00	2.780 (2.78)	1.050 (26.6)	3.50
NRP - VC100 - 6 -*	5 - 100	3	6	25.00	3.525 (89.6)	1.500 (41.3)	6.00
NRP - VC125 - 6 -*	5 - 125	3	6	28.00	3.835 (97.5)	1.500 (38.1)	8.00

**CRANE® POLYFLON**

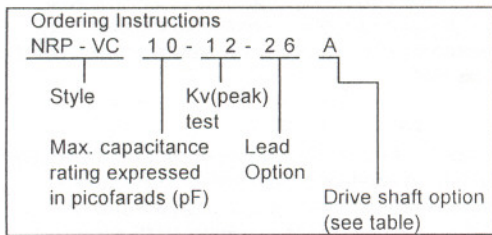
Polyflon Company, One Willard Road, Norwalk, CT 06851 • Tel: (203) 840-7555 • Fax: (203) 840-7565  
 Modem: (203) 840-7564 • Email: info@polyflon.com • http://www.polyflon.com

## RF Variable Capacitors (0.8 - 125 pF)

- Non-Magnetic • High Voltage • High Power • High "Q"
- Screwdriver Adjust Non-Rotating Piston Series

Drive Shaft Option Table	
Option	Description
A	Extension Shaft: .125" dia. x 3" long delrin rod with .500" dia. x .250" thick knurled delrin knob.
B	Coupling Adapter: .375" O.D. x .170" I.D. (female) x .500" long to .250" dia. (male). Overall length is 1". (Has set screws)
C	Coupling Adapter: .437" O.D. x .170" I.D. (female) to .250" dia. (female). Overall length is 1". (Has set screws).
94	Anode Terminal: .375", 10 - 32 UNC - 2A

Lead Option Table	
Lead Option	Description
06	without lead options
16	3" wire, top only - in line with flat
26	3" wire, top and bottom - in line with the flat
36	1 - 1/2" strap, top only - in line with the flat
66	3" wire, top only - opposite flat
76	3" wire, top and bottom - opposite flat
86	1 - 1/2" strap, top only - opposite flat

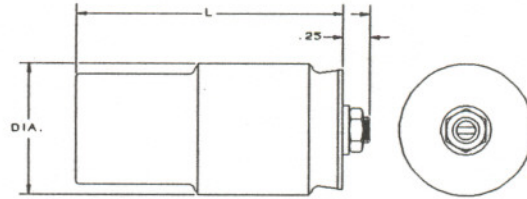


# POLYFLON DESIGN DATA

## RF Variable Capacitors (0.3 - 25 pF)

- Non-Magnetic • High Voltage • High Power • High "Q"
- Screwdriver Adjust Rotating Piston Series

### RP Series



#### Design

PTFE anode and mount surfaces are metalized with electrodeposited copper. Polyflon's proprietary plating process eliminates the possibility of air being trapped between the PTFE and copper interface which could break down under voltage stress.

#### Notes

- Working volts and maximum RMS current must not occur simultaneously.
- Peak test voltage rating may be used for pulsed voltage applications. Peak pulsed current will be limited by the duty cycle that will provide an average current that does not exceed the maximum RMS current.
- Mounting dimensions: 1/4" diameter "D" hole. Hardware: 1/4"-32 hex nut and internal tooth lockwasher. Mounting flange is at the bottom of the capacitor.

#### Specifications

Capacitance Range	0.3 - 25pF
Working Voltage	To 10Kv
Dielectric Strength	200% of working voltage
Quality Factor (Q)	5000 or greater
Insulation Resistance	10 <sup>6</sup> Megohms
Operating Temperature	-55 <sup>o</sup> C to 125 <sup>o</sup> C
Temperature Coefficient	50 ppm/ <sup>o</sup> C
Tuning Torque	4 inch ounces (max.)

Ordering Instructions		
RP - VC	1 0 - 1 2 - 2 5	
Style	Kv(peak) test	Lead Option
Max. capacitance rating expressed in picofarads (pF)		

#### Lead Option Table

Lead Option	Description
05	without lead options
15	3" wire, top only - in line with flat
25	3" wire, top and bottom - in line with the flat
35	1 - 1/2" strap, top only - in line with the flat
65	3" wire, top only - opposite flat
75	3" wire, top and bottom - opposite flat
85	1 - 1/2" strap, top only - opposite flat

PART NUMBER	Capacitance Range (pF)	Peak (Kv) Working Volts	Peak (Kv) Test Volts	Max. (RMS) Current (amps)	Dimensions/inch (mm)		Wt./Ounces (Approx.)
					L(+/- .020")	Dia.(+/- .020")	
RP - VC3 - 6 -*	0.3 - 3	3	6	0.70	0.800 (20.3)	0.375 (9.5)	0.10
RP - VC5 - 10 -*	0.8 - 5	5	10	2.40	1.250 (31.8)	0.500 (12.7)	0.25
RP - VC8 - 6 -*	3 - 8	3	6	1.90	0.870 (22.1)	0.560 (14.2)	0.25
RP - VC10 - 6 -*	0.8 - 10	3	6	1.70	1.150 (29.2)	0.375 (9.5)	0.20
RP - VC10 - 12 -*	0.8 - 10	6	12	3.40	1.530 (38.9)	0.625 (15.9)	0.75
RP - VC18 - 2 -*	0.8 - 18	1	2	1.70	1.150 (29.2)	0.420 (10.7)	0.20
RP - VC25 - 6 -*	5 - 25	3	6	5.50	1.430 (36.3)	0.875 (22.2)	1.00
RP - VC25 - 6B -*	5 - 25	3	6	3.90	1.540 (39.1)	0.625 (15.9)	1.00
RP - VC25 - 15 -*	5 - 25	10	15	7.20	1.770 (45.0)	1.250 (28.6)	1.75

\* See lead code on option table

**CRANE**® **POLYFLON**

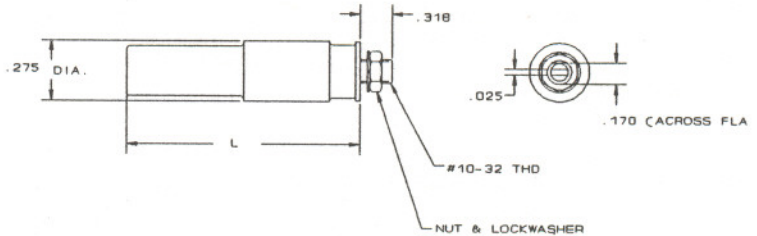
Polyflon Company, One Willard Road, Norwalk, CT 06851 • Tel: (203) 840-7555 • Fax: (203) 840-7565  
Modem: (203) 840-7564 • Email: info@polyflon.com • http://www.polyflon.com

# POLYFLON DESIGN DATA

## RF Variable Capacitors (0.8 - 50 pF)

- Non-Magnetic • High Voltage • High Power • High "Q"
- Screwdriver Adjust Non-Rotating Piston Series

### TTNRP Series



#### Specifications

Capacitance Range	0.8 - 50pF
Working Voltage	1Kv
Dielectric Strength	200% of working voltage
Quality Factor (Q)	5000 or greater
Insulation Resistance	10 <sup>6</sup> Megohms
Operating Temperature	-55° C to 125° C
Temperature Coefficient	50 ppm/° C
Tuning Torque	4 inch ounces (max.)

#### Design

PTFE anode and mount surfaces are metalized with electrodeposited copper. Polyflon's proprietary plating process eliminates the possibility of air being trapped between the PTFE and copper interface which could break down under voltage stress.

#### Notes

- 1 Working volts and maximum RMS current must not occur simultaneously.
- 2 Peak test voltage rating may be used for pulsed voltage applications. Peak pulsed current will be limited by the duty cycle that will provide an average current that does not exceed the maximum RMS current.

#### Ordering Instructions

TTNRP - VC	1 0	-	1 2	-	2 6	A
Style	Max. capacitance rating expressed in picofarads (pF)		Kv(peak) test		Lead Option	Drive shaft option (see table)

#### Lead Option Table

Lead Option	Description
06	without lead options
16	3" wire, top only - in line with flat
26	3" wire, top and bottom - in line with the flat
36	1 - 1/2" strap, top only - in line with the flat
66	3" wire, top only - opposite flat
76	3" wire, top and bottom - opposite flat
86	1 - 1/2" strap, top only - opposite flat

PART NUMBER	Capacitance Range (pF)	Peak (Kv) Working Volts	Peak (Kv) Test Volts	Max. (RMS) Current (amps)	Dimensions/inch (mm)		Wt./Ounces (Approx.)
					L(+/- .020")	Dia.(+/- .020")	
TTNRP - VC8 - 2 - *	0.8 - 3	1	2	0.60	0.550 (14.0)	0.275 (7.0)	0.07
TTNRP - VC10 - 2 - *	1 - 10	1	2	0.80	0.750 (19.1)	0.275 (7.0)	0.10
TTNRP - VC16 - 2 - *	2 - 16	1	2	1.00	0.950 (24.1)	0.275 (7.0)	0.13
TTNRP - VC20 - 2 - *	2 - 20	1	2	1.20	1.050 (26.7)	0.275 (7.0)	0.14
TTNRP - VC25 - 2 - *	2 - 25	1	2	1.40	1.350 (34.3)	0.275 (7.0)	0.15
TTNRP - VC30 - 2 - *	3 - 30	1	2	1.60	1.550 (39.5)	0.275 (7.0)	0.18
TTNRP - VC35 - 2 - *	3 - 35	1	2	1.80	1.750 (44.5)	0.275 (7.0)	0.20
TTNRP - VC40 - 2 - *	4 - 40	1	2	2.00	1.950 (49.5)	0.275 (7.0)	0.23
TTNRP - VC45 - 2 - *	5 - 45	1	2	2.40	2.350 (59.7)	0.275 (7.0)	0.29
TTNRP - VC50 - 2 - *	5 - 50	1	2	2.60	2.550 (64.8)	0.275 (7.0)	0.32

\* See lead code on option table

**CRANE**® **POLYFLON**

Polyflon Company, One Willard Road, Norwalk, CT 06851 • Tel: (203) 840-7555 • Fax: (203) 840-7565  
Modem: (203) 840-7564 • Email: info@polyflon.com • http://www.polyflon.com