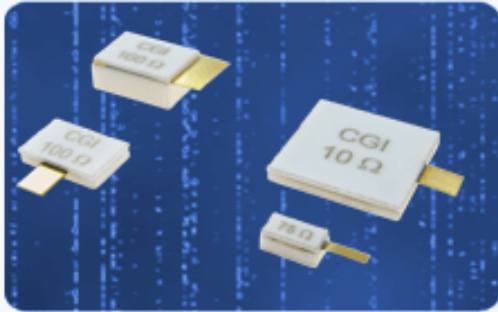


Component General, Inc.

■ Stripline Chip Terminations

■ MECHANICAL SPECIFICATIONS



Substrate : Beryllium Oxide Ceramic.

Contact: Beryllium Copper - Gold Plated per MIL-G-45204

Covers : Alumina Ceramic.

Tolerance : ± .010" Unless specified.

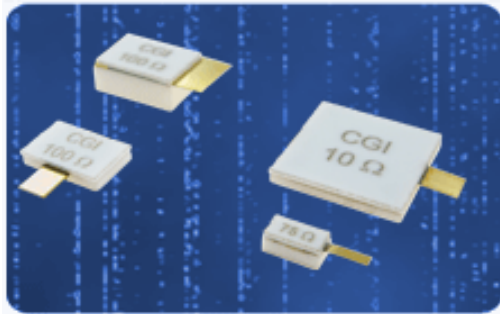
high power chip terminations product selection chart

CGI P/N	Power	Resistance (Ohms)	Standard Tolerance
Note: Click a part number from the list below to see a data sheet for that part.			
CCT-100-2	62 W	10 - 1000	5 %
CCT-100-2B	40 W	10 - 1000	5 %
CCT-230-1	150 W	10 - 1000	5 %
CCT-230-2	40 W	10 - 1000	5 %
CCT-250-1	170 W	10 - 1000	5 %
CCT-250-1B	80 W	10 - 1000	5 %
CCT-250-2	330 W	10 - 1000	5 %
CCT-250-2B	100 W	10 - 1000	5 %
CCT-250-2C	160 W	10 - 1000	5 %
CCT-375-1	350 W	10 - 1000	5 %
CCT-375-1B	250 W	10 - 1000	5 %
CCT-375-2	250 W	10 - 1000	5 %
CCT-375-3	250 W	10 - 1000	5 %

Component General, Inc.

■ Stripline Chip Terminations

■ MECHANICAL SPECIFICATIONS



Substrate : Beryllium Oxide Ceramic.

Contact: Beryllium Copper - Gold Plated per MIL-G-45204

Covers : Alumina Ceramic.

Tolerance : $\pm .010$ " Unless specified.

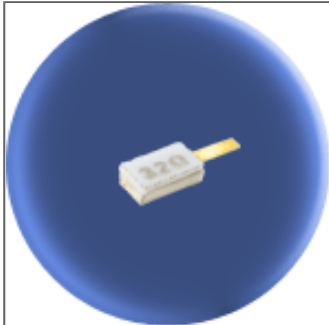
high power chip terminations product selection chart

CGI P/N	Power	Resistance (Ohms)	Standard Tolerance
Note: Click a part number from the list below to see a data sheet for that part.			
CCT-500-1	500 W	10 - 1000	5 %
CCT-625-1	700 W	10 - 1000	5 %
CCT-625-2	180 W	10 - 1000	5 %
CCT-1000-1	1000 W	10 - 1000	5 %

Component General, Inc.

P/N: CCT-100-2

Stripline Chip W/Cover Terminations



Mechanical Specifications

Substrate:

Beryllium Oxide Ceramic.

Contact:

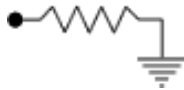
Beryllium Copper, Gold Plated per MIL-G-45204. Length: 0.125" Min., Width: 0.040", Thickness 0.004" \pm 0.002".

Covers:

Alumina Ceramic.

Tolerance:

\pm 0.010" unless specified.



Note: Power is based on infinite and ideal heat sink with the heat sink at 100°C

Electrical Specifications

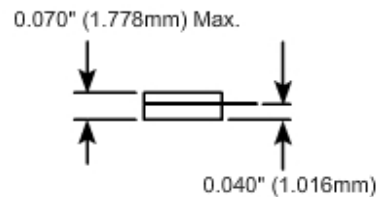
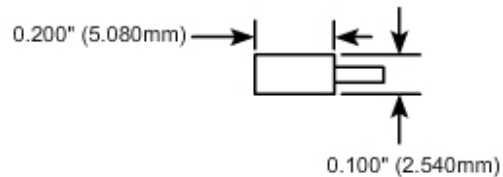
Resistance Value:

10 - 1000 Ω or as required. Other values available upon request.

Standard Resistance Tolerance:

5% Other tolerances available upon request.

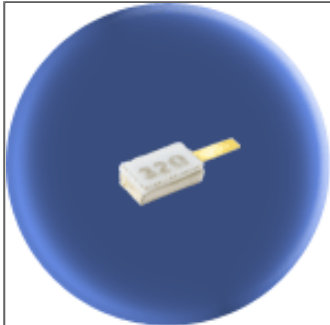
Part Dimensions



Component General, Inc.

P/N: CCT-100-2B

Stripline Chip W/Cover Terminations



Mechanical Specifications

Substrate:

Beryllium Oxide Ceramic.

Contact:

Beryllium Copper, Gold Plated per MIL-G-45204.

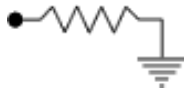
Length: 0.125" Min., Width: 0.040", Thickness 0.004" \pm 0.002".

Covers:

Alumina Ceramic.

Tolerance:

\pm 0.010" unless specified.



Note: Power is based on infinite and ideal heat sink with the heat sink at 100°C

Electrical Specifications

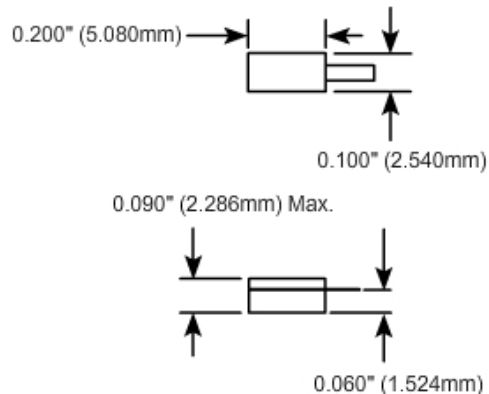
Resistance Value:

10 - 1000 Ω or as required. Other values available upon request.

Standard Resistance Tolerance:

\pm 5% Other tolerances available upon request.

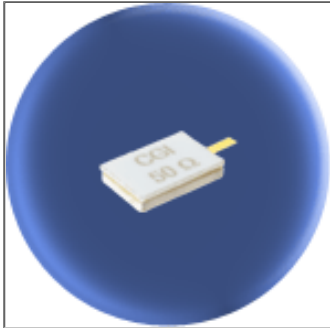
Part Dimensions



Component General, Inc.

P/N: CCT-230-1

Stripline Chip W/Cover Terminations



Mechanical Specifications

Substrate:

Beryllium Oxide Ceramic.

Contact:

Beryllium Copper, Gold Plated per MIL-G-45204.

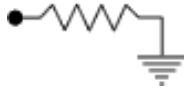
Length: 0.125" Min., Width: 0.040", Thickness 0.004" \pm 0.002".

Covers:

Alumina Ceramic.

Tolerance:

\pm 0.010" unless specified.



Note: Power is based on infinite and ideal heat sink with the heat sink at 100°C

Electrical Specifications

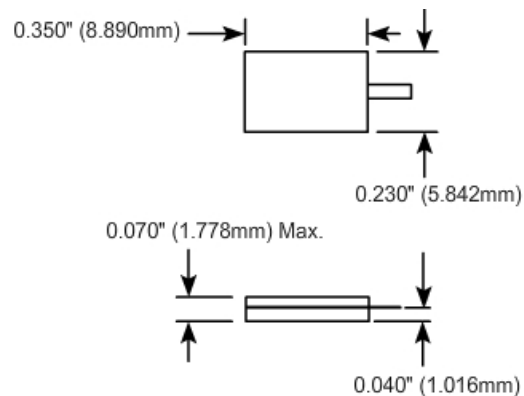
Resistance Value:

10 - 1000 Ω or as required. Other values available upon request.

Standard Resistance Tolerance:

\pm 5% Other tolerances available upon request.

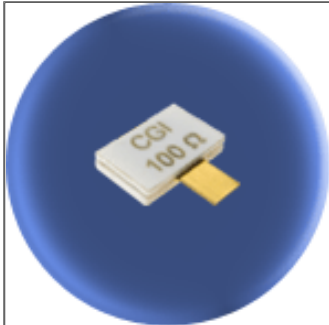
Part Dimensions



Component General, Inc.

P/N: CCT-230-2

Stripline Chip W/Cover Terminations



Mechanical Specifications

Substrate:

Beryllium Oxide Ceramic.

Contact:

Beryllium Copper, Gold Plated per MIL-G-45204.

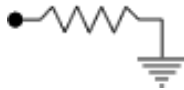
Length: 0.125" Min., Width: 0.120", Thickness 0.004" \pm 0.002".

Covers:

Alumina Ceramic.

Tolerance:

\pm 0.010" unless specified.



Note: Power is based on infinite and ideal heat sink with the heat sink at 100°C

Electrical Specifications

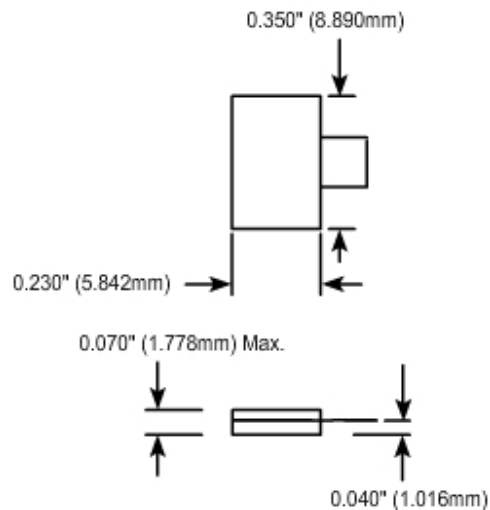
Resistance Value:

10 - 1000 Ω or as required. Other values available upon request.

Standard Resistance Tolerance:

\pm 5% Other tolerances available upon request.

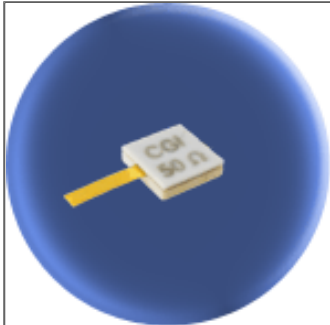
Part Dimensions



Component General, Inc.

P/N: CCT-250-1

Stripline Chip W/Cover Terminations



Mechanical Specifications

Substrate:

Beryllium Oxide Ceramic.

Contact:

Beryllium Copper, Gold Plated per MIL-G-45204.

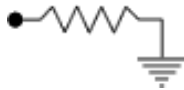
Length: 0.125" Min., Width: 0.060", Thickness 0.004" \pm 0.002".

Covers:

Alumina Ceramic.

Tolerance:

\pm 0.010" unless specified.



Note: Power is based on infinite and ideal heat sink with the heat sink at 100°C

Electrical Specifications

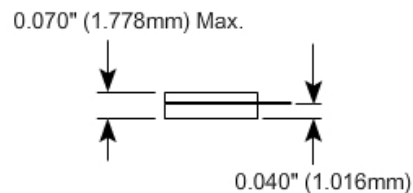
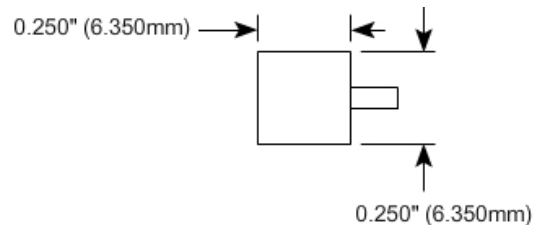
Resistance Value:

10 - 1000 Ω or as required. Other values available upon request.

Standard Resistance Tolerance:

\pm 5% Other tolerances available upon request.

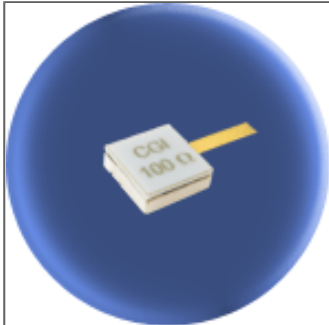
Part Dimensions



Component General, Inc.

P/N: CCT-250-1B

Stripline Chip W/Cover Terminations



Mechanical Specifications

Substrate:

Beryllium Oxide Ceramic.

Contact:

Beryllium Copper, Gold Plated per MIL-G-45204.

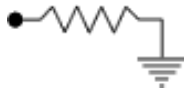
Length: 0.125" Min., Width: 0.060", Thickness 0.004" \pm 0.002".

Covers:

Alumina Ceramic.

Tolerance:

\pm 0.010" unless specified.



Note: Power is based on infinite and ideal heat sink with the heat sink at 100°C

Electrical Specifications

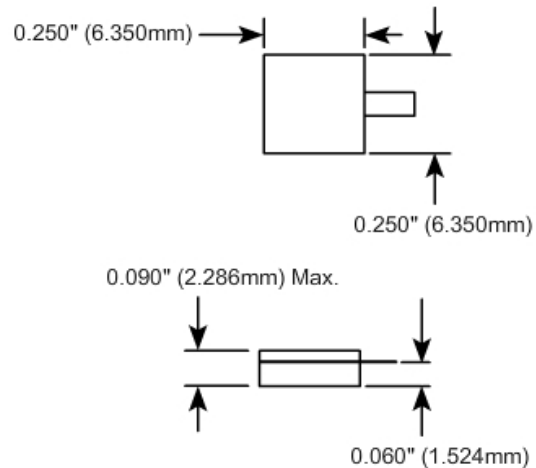
Resistance Value:

10 - 1000 Ω or as required. Other values available upon request.

Standard Resistance Tolerance:

\pm 5% Other tolerances available upon request.

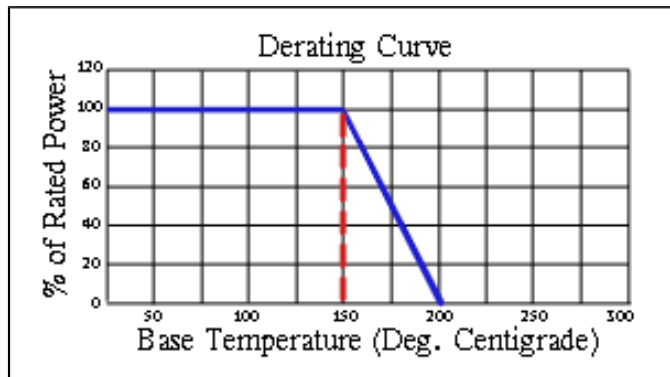
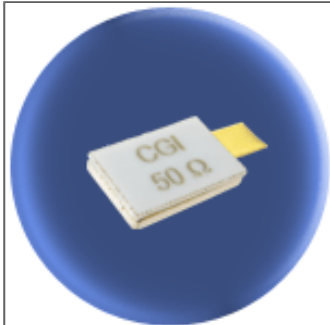
Part Dimensions



Component General, Inc.

P/N: CCT-250-2

Stripline Chip W/Cover Terminations



Mechanical Specifications

Substrate:

Beryllium Oxide Ceramic.

Contact:

Beryllium Copper, Gold Plated per MIL-G-45204.

Length: 0.125" Min., Width: 0.120", Thickness 0.004" \pm 0.002".

Covers:

Alumina Ceramic.

Tolerance:

\pm 0.010" unless specified.

Electrical Specifications

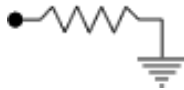
Resistance Value:

10 - 1000 Ω or as required. Other values available upon request.

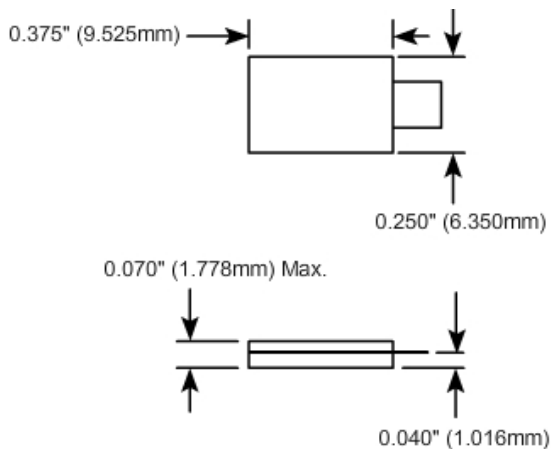
Standard Resistance Tolerance:

\pm 5% Other tolerances available upon request.

Part Dimensions



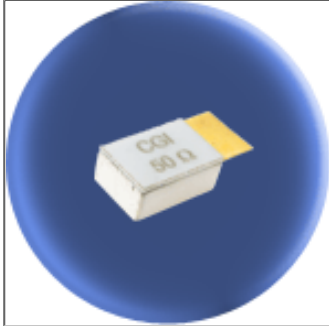
Note: Power is based on infinite and ideal heat sink with the heat sink at 100°C



Component General, Inc.

P/N: CCT-250-2B

Stripline Chip W/Cover Terminations



Mechanical Specifications

Substrate:

Beryllium Oxide Ceramic.

Contact:

Beryllium Copper, Gold Plated per MIL-G-45204.

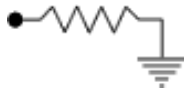
Length 0.125" Min., Width 0.250"
Thickness 0.004 ± 0.002 ".

Covers:

Alumina Ceramic.

Tolerance:

± 0.010 " unless specified.



Note: Power is based on infinite and ideal heat sink with the heat sink at 100°C

Electrical Specifications

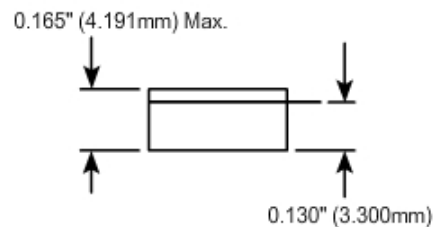
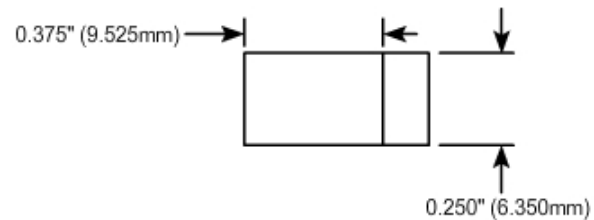
Resistance Value:

10 - 1000 Ω or as required. Other values available upon request.

Standard Resistance Tolerance:

$\pm 5\%$ Other tolerances available upon request.

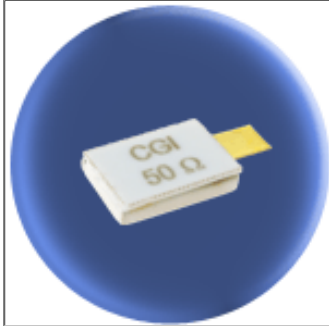
Part Dimensions



Component General, Inc.

P/N: CCT-250-2C

Stripline Chip W/Cover Terminations



Mechanical Specifications

Substrate:

Beryllium Oxide Ceramic.

Contact:

Beryllium Copper, Gold Plated per MIL-G-45204.

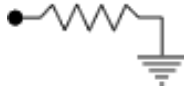
Length: 0.125" Min., Width: 0.120", Thickness 0.004" \pm 0.002".

Covers:

Alumina Ceramic.

Tolerance:

\pm 0.010" unless specified.



Note: Power is based on infinite and ideal heat sink with the heat sink at 100°C

Electrical Specifications

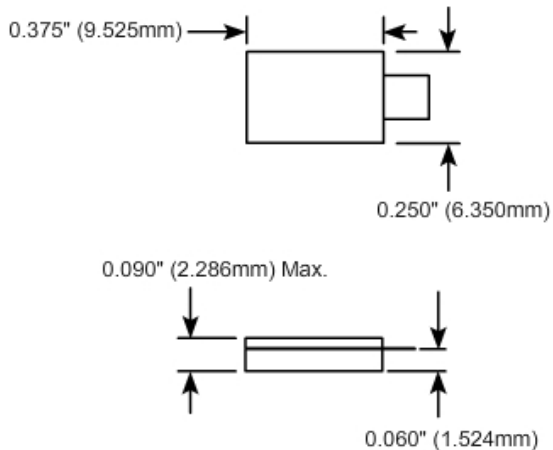
Resistance Value:

10 - 1000 Ω or as required. Other values available upon request.

Standard Resistance Tolerance:

\pm 5% Other tolerances available upon request.

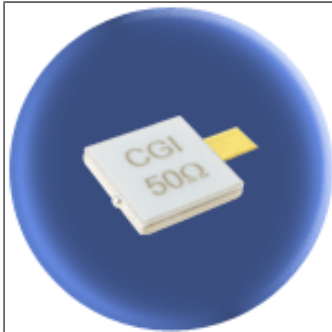
Part Dimensions



Component General, Inc.

P/N: CCT-375-1

Stripline Chip W/Cover Terminations



Mechanical Specifications

Substrate:

Beryllium Oxide Ceramic.

Contact:

Beryllium Copper, Gold Plated per MIL-G-45204.

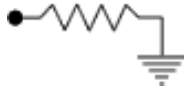
Length: 0.125" Min., Width: 0.120", Thickness 0.004" \pm 0.002".

Covers:

Alumina Ceramic.

Tolerance:

\pm 0.010" unless specified.



Note: Power is based on infinite and ideal heat sink with the heat sink at 100°C

Electrical Specifications

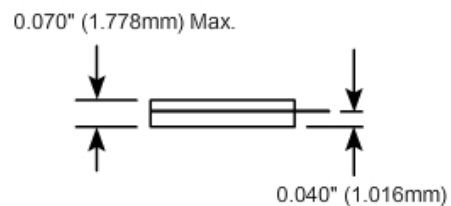
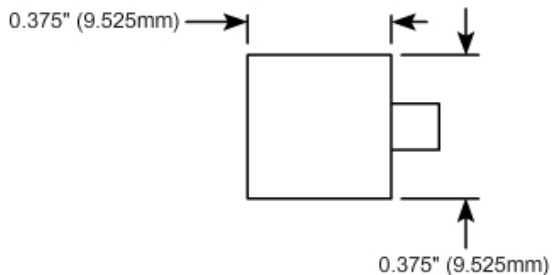
Resistance Value:

10 - 1000 Ω or as required. Other values available upon request.

Standard Resistance Tolerance:

\pm 5% Other tolerances available upon request.

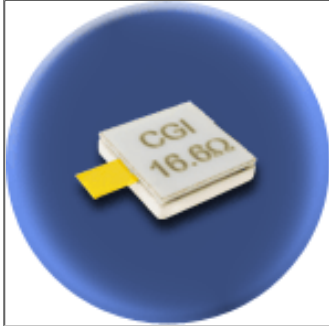
Part Dimensions



Component General, Inc.

P/N: CCT-375-1B

Stripline Chip W/Cover Terminations



Mechanical Specifications

Substrate:

Beryllium Oxide Ceramic.

Contact:

Beryllium Copper, Gold Plated per MIL-G-45204.

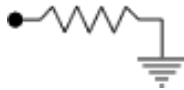
Length: 0.125" Min., Width: 0.120", Thickness 0.004" \pm 0.002".

Covers:

Alumina Ceramic.

Tolerance:

\pm 0.010" unless specified.



Note: Power is based on infinite and ideal heat sink with the heat sink at 100°C

Electrical Specifications

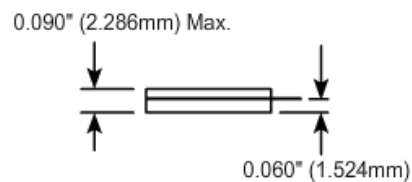
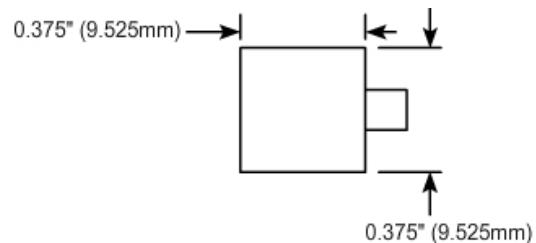
Resistance Value:

10 - 1000 Ω or as required. Other values available upon request.

Standard Resistance Tolerance:

\pm 5% Other tolerances available upon request.

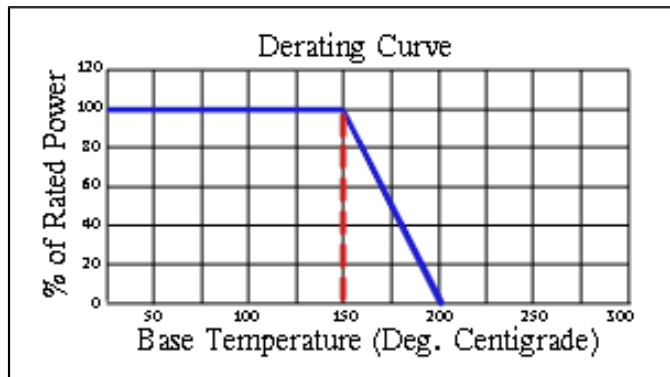
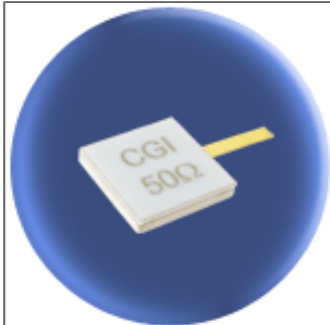
Part Dimensions



Component General, Inc.

P/N: CCT-375-2

Stripline Chip W/Cover Terminations



Mechanical Specifications

Substrate:

Beryllium Oxide Ceramic.

Contact:

Beryllium Copper, Gold Plated per MIL-G-45204.

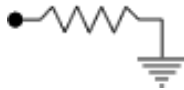
Length: 0.125" Min., Width: 0.060", Thickness 0.004" \pm 0.002".

Covers:

Alumina Ceramic.

Tolerance:

\pm 0.010" unless specified.



Note: Power is based on infinite and ideal heat sink with the heat sink at 100°C

Electrical Specifications

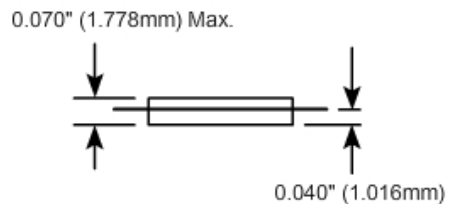
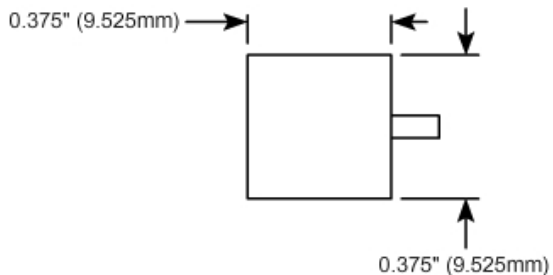
Resistance Value:

10 - 1000 Ω or as required. Other values available upon request.

Standard Resistance Tolerance:

\pm 5% Other tolerances available upon request.

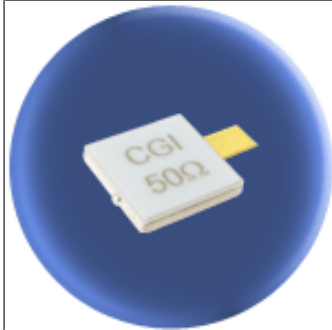
Part Dimensions



Component General, Inc.

P/N: CCT-375-3

Stripline Chip W/Cover Terminations



Mechanical Specifications

Substrate:

Beryllium Oxide Ceramic.

Contact:

Beryllium Copper, Gold Plated per MIL-G-45204.

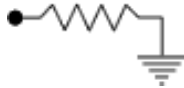
Length: 0.125" Min., Width: 0.120", Thickness 0.004" \pm 0.002".

Covers:

Alumina Ceramic.

Tolerance:

\pm 0.010" unless specified.



Note: Power is based on infinite and ideal heat sink with the heat sink at 100°C

Electrical Specifications

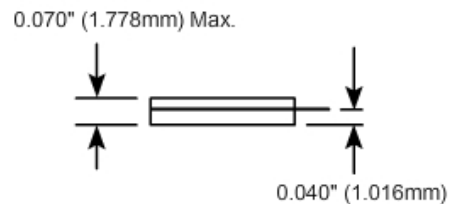
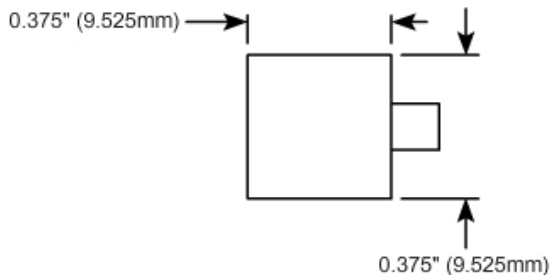
Resistance Value:

10 - 1000 Ω or as required. Other values available upon request.

Standard Resistance Tolerance:

\pm 5% Other tolerances available upon request.

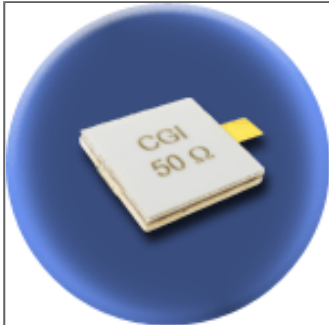
Part Dimensions



Component General, Inc.

P/N: CCT-500-1

Stripline Chip W/Cover Terminations



Mechanical Specifications

Substrate:

Beryllium Oxide Ceramic.

Contact:

Beryllium Copper, Gold Plated per MIL-G-45204.

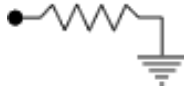
Length: 0.125" Min., Width: 0.120", Thickness 0.004" \pm 0.002".

Covers:

Alumina Ceramic.

Tolerance:

\pm 0.010" unless specified.



Note: Power is based on infinite and ideal heat sink with the heat sink at 100°C

Electrical Specifications

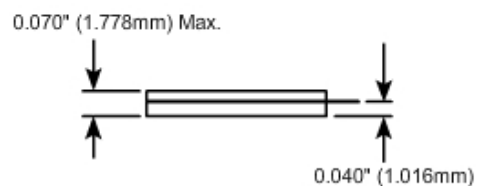
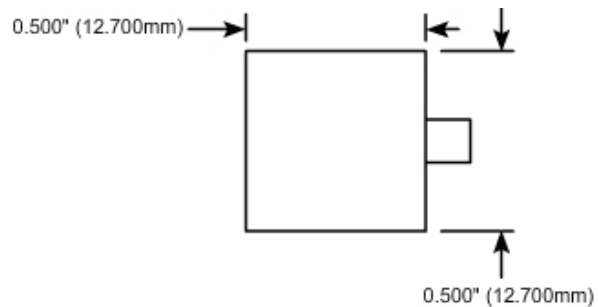
Resistance Value:

10 - 1000 Ω or as required. Other values available upon request.

Standard Resistance Tolerance:

\pm 5% Other tolerances available upon request.

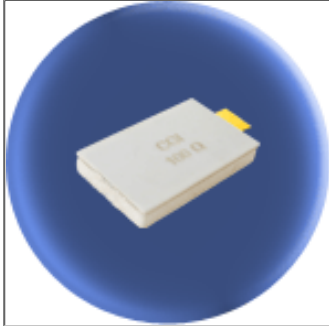
Part Dimensions



Component General, Inc.

P/N: CCT-625-1

Stripline Chip W/Cover Resistors



Mechanical Specifications

Substrate:

Beryllium Oxide Ceramic.

Contact:

Beryllium Copper, Gold Plated per MIL-G-45204.

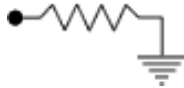
Length: 0.125" Min., Width: 0.250", Thickness 0.004" \pm 0.002".

Covers:

Alumina Ceramic.

Tolerance:

\pm 0.010" unless specified.



Note: Power is based on infinite and ideal heat sink with the heat sink at 100°C

Electrical Specifications

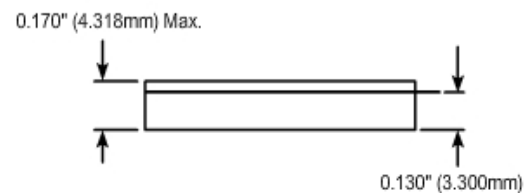
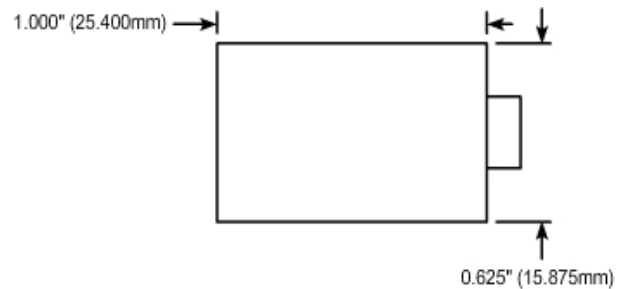
Resistance Value:

10 - 1000 Ω or as required. Other values available upon request.

Standard Resistance Tolerance:

\pm 5% Other tolerances available upon request.

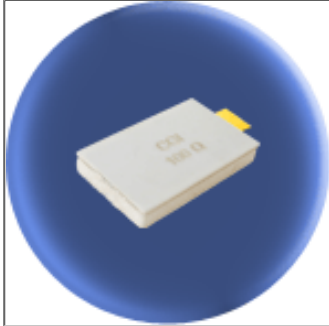
Part Dimensions



Component General, Inc.

P/N: CCT-625-2

Stripline Chip W/Cover Resistors



Mechanical Specifications

Substrate:

Beryllium Oxide Ceramic.

Contact:

Beryllium Copper, Gold Plated per MIL-G-45204.

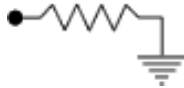
Length: 0.125" Min., Width: 0.250", Thickness 0.004" \pm 0.002".

Covers:

Alumina Ceramic.

Tolerance:

\pm 0.010" unless specified.



Note: Power is based on infinite and ideal heat sink with the heat sink at 100°C

Electrical Specifications

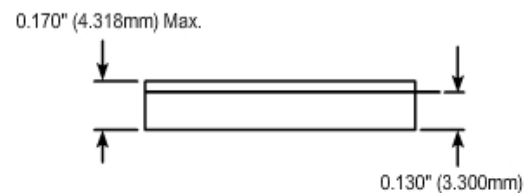
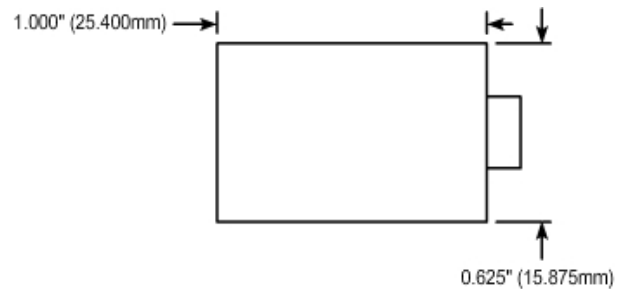
Resistance Value:

10 - 1000 Ω or as required. Other values available upon request.

Standard Resistance Tolerance:

\pm 5% Other tolerances available upon request.

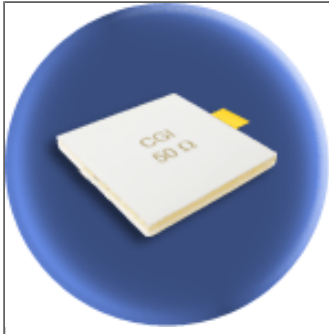
Part Dimensions



Component General, Inc.

P/N: CCT-1000-1

Stripline Chip W/Cover Terminations



Mechanical Specifications

Substrate:

Beryllium Oxide Ceramic.

Contact:

Beryllium Copper, Gold Plated per MIL-G-45204.

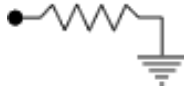
Length: 0.125" Min., Width: 0.250", Thickness 0.004" \pm 0.002".

Covers:

Alumina Ceramic.

Tolerance:

\pm 0.010" unless specified.



Note: Power is based on infinite and ideal heat sink with the heat sink at 100°C

Electrical Specifications

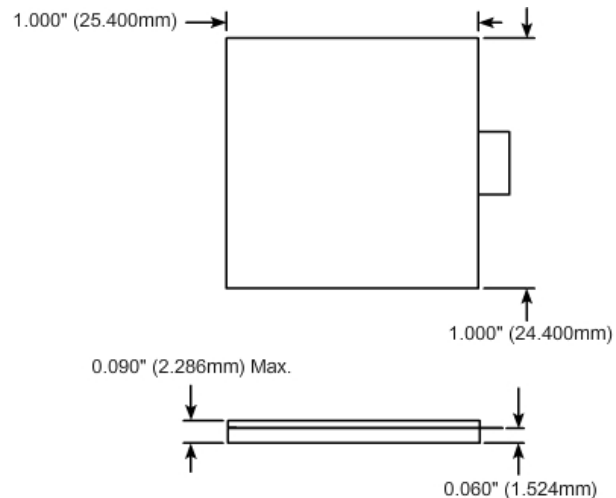
Resistance Value:

10 - 1000 Ω or as required. Other values available upon request.

Standard Resistance Tolerance:

\pm 5% Other tolerances available upon request.

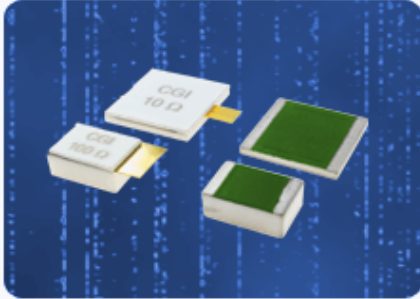
Part Dimensions



Component General, Inc.

■ Stripline Chip Terminations

■ MECHANICAL SPECIFICATIONS



Substrate : Beryllium Oxide Ceramic.
 Resistive Element : Proprietary Thick Film.
 Terminals : Proprietary Silver.
 Tolerance : ± .005" Except where noted (*), then ± .010"

high power chip Terminations product selection chart

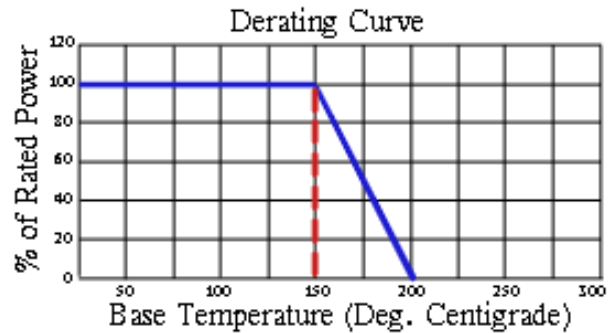
CGI P/N	Power	Resistance (Ohms)	Standard Tolerance
Note: Click a part number from the list below to see a data sheet for that part.			
CPT-40	40 W	10 - 1000	2 %
CPT-100-2	62 W	10 - 1000	2 %
CPT-100-2B	40 W	10 - 1000	2 %
CPT-230-1	150 W	10 - 1000	2 %
CPT-230-2	40 W	10 - 1000	2 %
CPT-250-1A	170 W	10 - 1000	2 %
CPT-250-1B	80 W	10 - 1000	2 %
CPT-250-2A	330 W	10 - 1000	2 %
CPT-250-2B	100 W	10 - 1000	2 %
CPT-250-2C	160 W	10 - 1000	2 %
CPT-375-1	350 W	10 - 1000	2 %
CPT-375-1B	250 W	10 - 1000	2 %
CPT-500-1*	500 W	10 - 1000	2 %
CPT-625-1*	700 W	10 - 1000	2 %
CPT-625-2*	185 W	10 - 1000	2 %
CPT-1000-1*	1000 W	10 - 1000	2 %

Component General, Inc.

P/N: CPT-40

Stripline Chip Terminations

Chip Terminations |
CPT-40



Mechanical Specifications

Substrate:

Beryllium Oxide Ceramic.

Resistive Element:

Proprietary thick film.

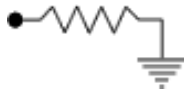
Terminals:

Proprietary Silver.

Tolerance:

± 0.005" unless specified.

Note: Power is based on infinite and ideal heat sink with the heat sink at 100°C



Electrical Specifications

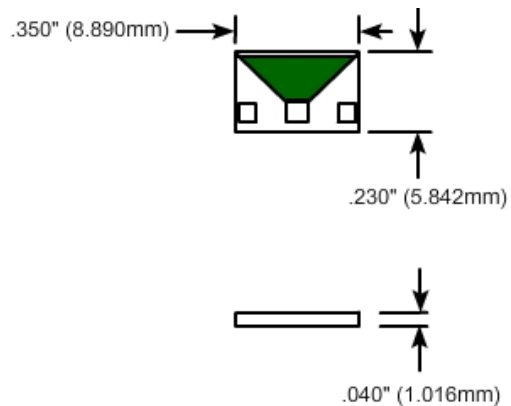
Resistance Value:

10 - 1000 Ω as required. Other values available upon request.

Standard Resistance Tolerance:

± 2% Other tolerances available upon request.

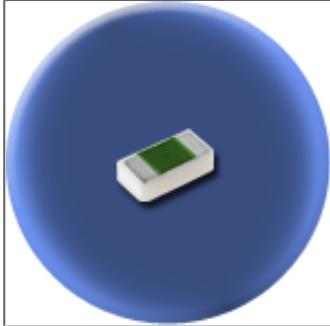
Part Dimensions



Component General, Inc.

P/N: CPT-100-2

Stripline Chip Terminations



Mechanical Specifications

Substrate:

Beryllium Oxide Ceramic.

Resistive Element:

Proprietary thick film.

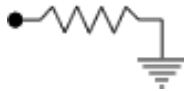
Terminals:

Proprietary Silver.

Tolerance:

± 0.005" unless specified.

Note: Power is based on infinite and ideal heat sink with the heat sink at 100°C



Electrical Specifications

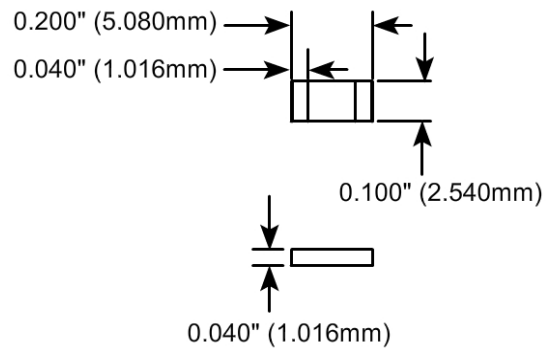
Resistance Value:

10 - 1000 Ω as required. Other values available upon request.

Standard Resistance Tolerance:

± 2% Other tolerances available upon request.

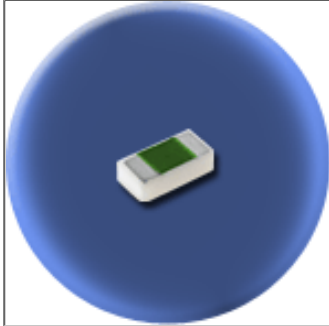
Part Dimensions



Component General, Inc.

P/N: CPT-100-2B

Stripline Chip Terminations



Mechanical Specifications

Substrate:

Beryllium Oxide Ceramic.

Resistive Element:

Proprietary thick film.

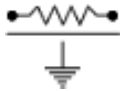
Terminals:

Proprietary Silver.

Tolerance:

± 0.005" unless specified.

Note: Power is based on infinite and ideal heat sink with the heat sink at 100°C



Electrical Specifications

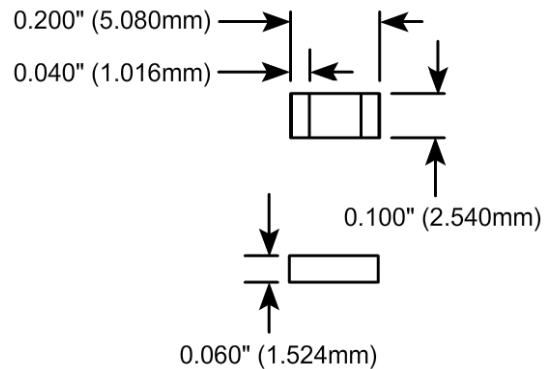
Resistance Value:

10 - 1000 Ω as required. Other values available upon request.

Standard Resistance Tolerance:

± 2% Other tolerances available upon request.

Part Dimensions

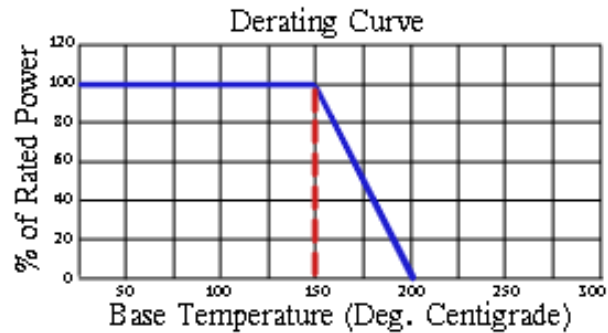


Component General, Inc.

P/N: CPT-230-1

Stripline Chip Terminations

Chip Terminations |
CPT-230-1



Mechanical Specifications

Substrate:

Beryllium Oxide Ceramic.

Resistive Element:

Proprietary thick film.

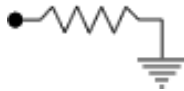
Terminals:

Proprietary Silver.

Tolerance:

± 0.005" unless specified.

Note: Power is based on infinite and ideal heat sink with the heat sink at 100°C



Electrical Specifications

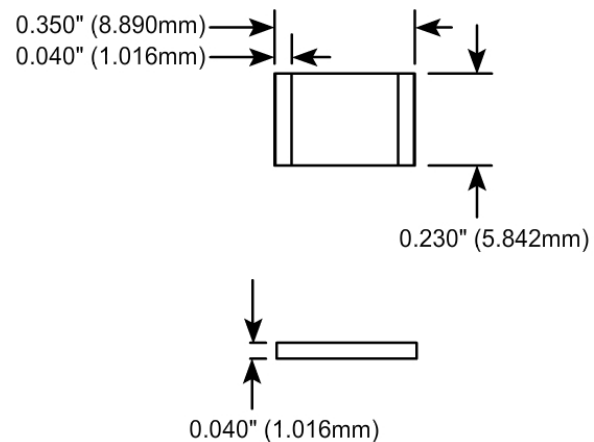
Resistance Value:

10 - 1000 Ω as required. Other values available upon request.

Standard Resistance Tolerance:

± 2% Other tolerances available upon request.

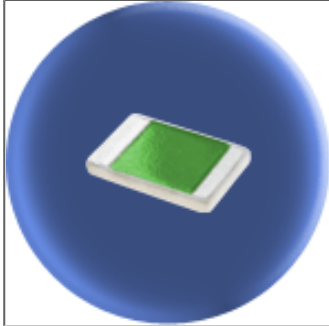
Part Dimensions



Component General, Inc.

P/N: CPT-230-2

Stripline Chip Resistors



Mechanical Specifications

Substrate:

Beryllium Oxide Ceramic.

Resistive Element :

Proprietary thick film.

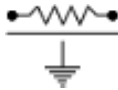
Terminals:

Proprietary Silver.

Tolerance:

± 0.005" unless specified.

Note: Power is based on infinite and ideal heat sink with the heat sink at 100°C



Electrical Specifications

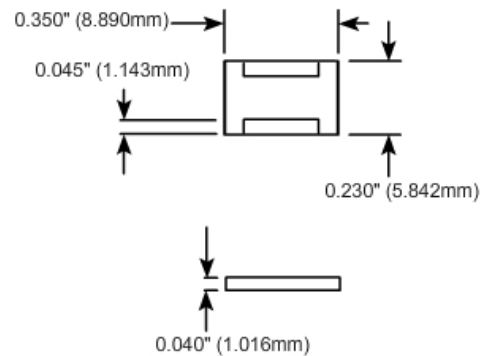
Resistance Value:

10 - 1000 Ω as required. Other values available upon request.

Standard Resistance Tolerance:

± 2% Other tolerances available upon request.

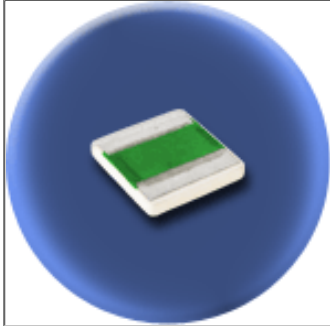
Part Dimensions



Component General, Inc.

P/N: CPT-250-1A

Stripline Chip Terminations



Mechanical Specifications

Substrate:

Beryllium Oxide Ceramic.

Resistive Element:

Proprietary thick film.

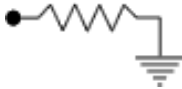
Terminals:

Proprietary Silver.

Tolerance:

± 0.005" unless specified.

Note: Power is based on infinite and ideal heat sink with the heat sink at 100°C



Electrical Specifications

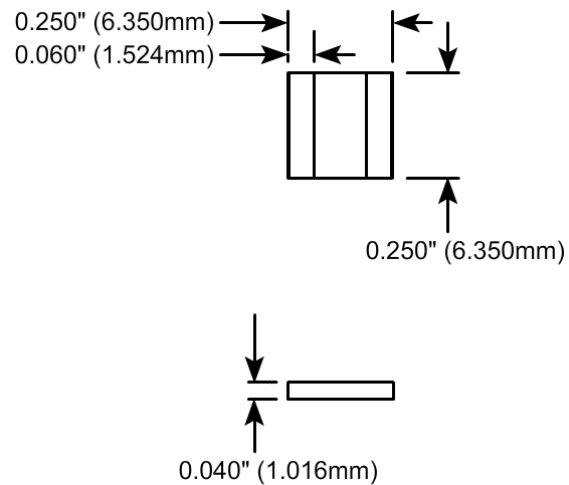
Resistance Value:

10 - 1000 Ω as required. Other values available upon request.

Standard Resistance Tolerance:

± 2% Other tolerances available upon request.

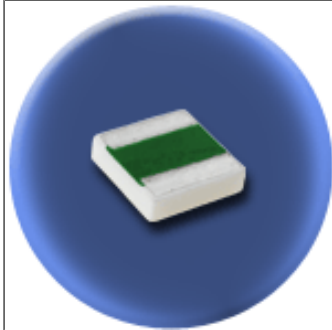
Part Dimensions



Component General, Inc.

P/N: CPT-250-1B

Stripline Chip Terminations



Mechanical Specifications

Substrate:

Beryllium Oxide Ceramic.

Resistive Element:

Proprietary thick film.

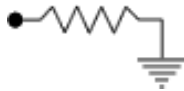
Terminals:

Proprietary Silver.

Tolerance:

± 0.005" unless specified.

Note: Power is based on infinite and ideal heat sink with the heat sink at 100°C



Electrical Specifications

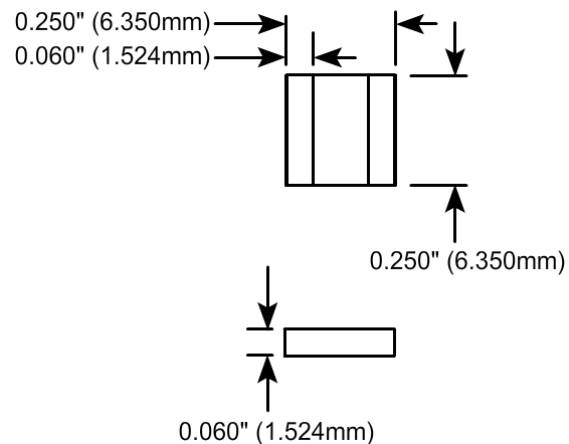
Resistance Value:

10 - 1000 Ω as required. Other values available upon request.

Standard Resistance Tolerance:

± 2% Other tolerances available upon request.

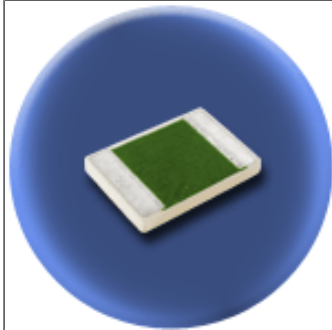
Part Dimensions



Component General, Inc.

P/N: CPT-250-2A

Stripline Chip Terminations



Mechanical Specifications

Substrate:

Beryllium Oxide Ceramic.

Resistive Element:

Proprietary thick film.

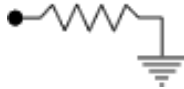
Terminals:

Proprietary Silver.

Tolerance:

± 0.005" unless specified.

Note: Power is based on infinite and ideal heat sink with the heat sink at 100°C



Electrical Specifications

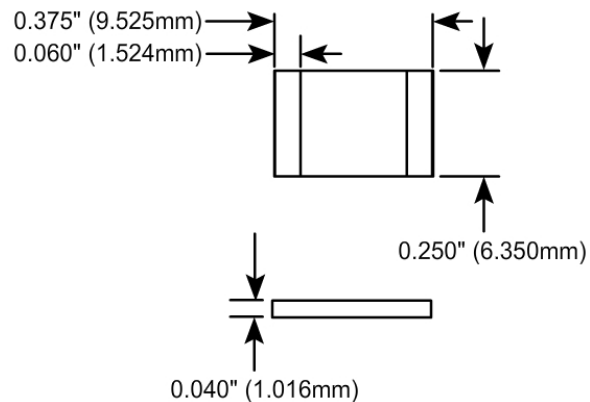
Resistance Value:

10 - 1000 Ω as required. Other values available upon request.

Standard Resistance Tolerance:

± 2% Other tolerances available upon request.

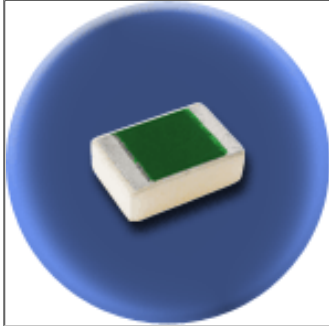
Part Dimensions



Component General, Inc.

P/N: CPT-250-2B

Stripline Chip Terminations



Mechanical Specifications

Substrate:

Beryllium Oxide Ceramic.

Resistive Element:

Proprietary thick film.

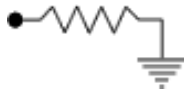
Terminals:

Proprietary Silver.

Tolerance:

± 0.005" unless specified.

Note: Power is based on infinite and ideal heat sink with the heat sink at 100°C



Electrical Specifications

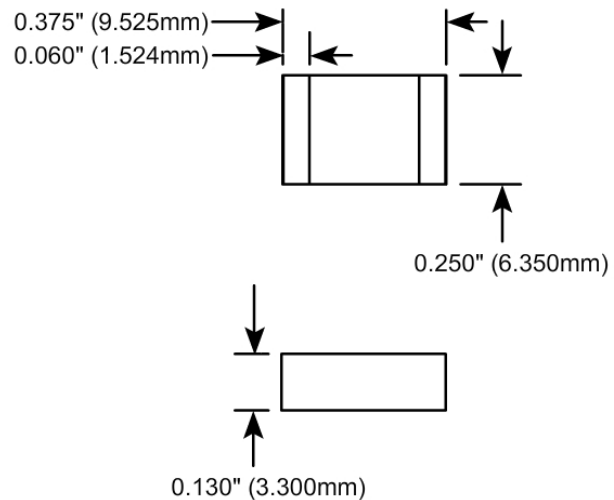
Resistance Value:

10 - 1000 Ω as required. Other values available upon request.

Standard Resistance Tolerance:

± 2% Other tolerances available upon request.

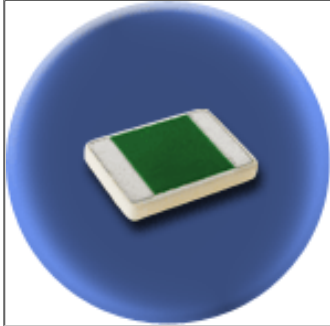
Part Dimensions



Component General, Inc.

P/N: CPT-250-2C

Stripline Chip Resistors



Mechanical Specifications

Substrate:

Beryllium Oxide Ceramic.

Resistive Element :

Proprietary thick film.

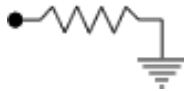
Terminals:

Proprietary Silver.

Tolerance:

± 0.005" unless specified.

Note: Power is based on infinite and ideal heat sink with the heat sink at 100°C



Electrical Specifications

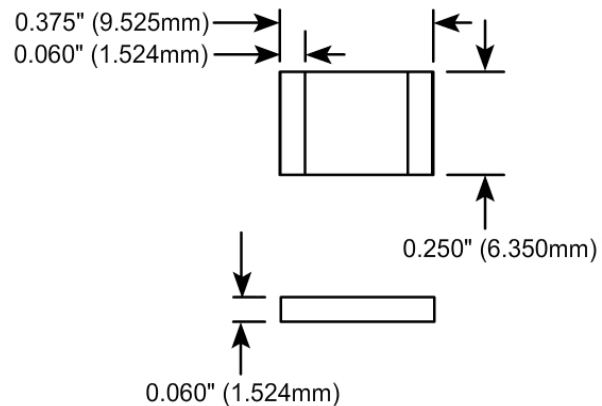
Resistance Value:

10 - 1000 Ω as required. Other values available upon request.

Standard Resistance Tolerance:

± 2% Other tolerances available upon request.

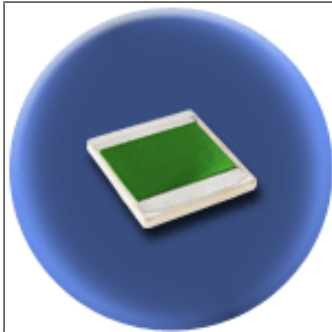
Part Dimensions



Component General, Inc.

P/N: CPT-375-1

Stripline Chip Terminations



Mechanical Specifications

Substrate:

Beryllium Oxide Ceramic.

Resistive Element:

Proprietary thick film.

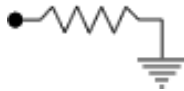
Terminals:

Proprietary Silver.

Tolerance:

± 0.005" unless specified.

Note: Power is based on infinite and ideal heat sink with the heat sink at 100°C



Electrical Specifications

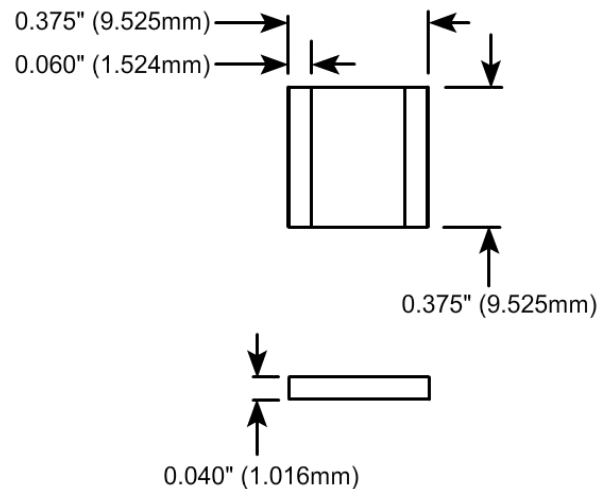
Resistance Value:

10 - 1000 Ω as required. Other values available upon request.

Standard Resistance Tolerance:

± 2% Other tolerances available upon request.

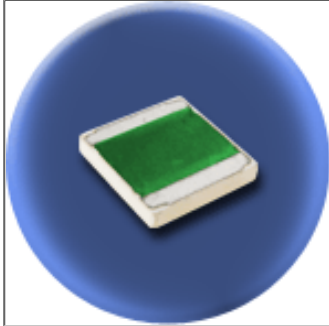
Part Dimensions



Component General, Inc.

P/N: CPT-375-1B

Stripline Chip Terminations



Mechanical Specifications

Substrate:

Beryllium Oxide Ceramic.

Resistive Element:

Proprietary thick film.

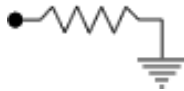
Terminals:

Proprietary Silver.

Tolerance:

± 0.005" unless specified.

Note: Power is based on infinite and ideal heat sink with the heat sink at 100°C



Electrical Specifications

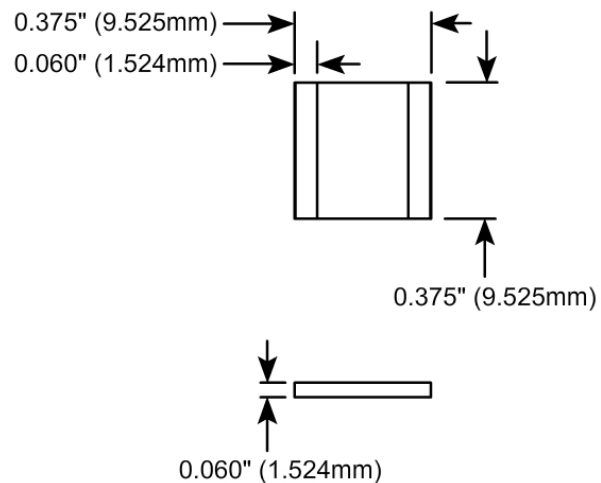
Resistance Value:

10 - 1000 Ω as required. Other values available upon request.

Standard Resistance Tolerance:

± 2% Other tolerances available upon request.

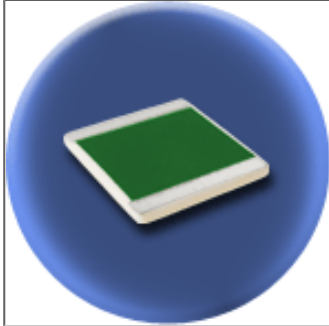
Part Dimensions



Component General, Inc.

P/N: CPT-500-1

Stripline Chip Terminations



Mechanical Specifications

Substrate:

Beryllium Oxide Ceramic.

Resistive Element:

Proprietary thick film.

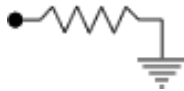
Terminals:

Proprietary Silver.

Tolerance:

± 0.010" unless specified.

Note: Power is based on infinite and ideal heat sink with the heat sink at 100°C



Electrical Specifications

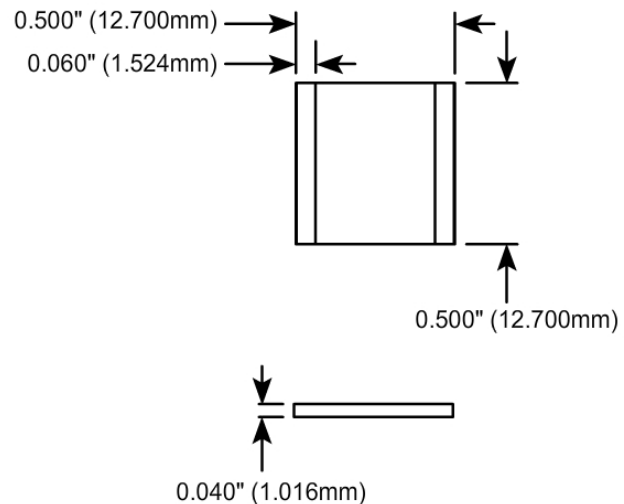
Resistance Value:

10 - 1000 Ω as required. Other values available upon request.

Standard Resistance Tolerance:

± 2% Other tolerances available upon request.

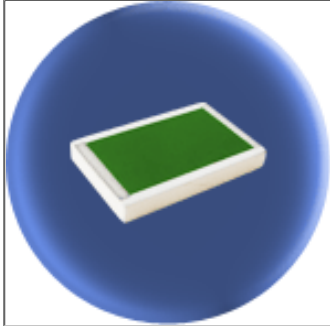
Part Dimensions



Component General, Inc.

P/N: CPT-625-1

Stripline Chip Terminations



Mechanical Specifications

Substrate:

Beryllium Oxide Ceramic.

Resistive Element:

Proprietary thick film.

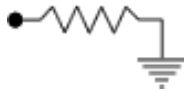
Terminals:

Proprietary Silver.

Tolerance:

± 0.010" unless specified.

Note: Power is based on infinite and ideal heat sink with the heat sink at 100°C



Electrical Specifications

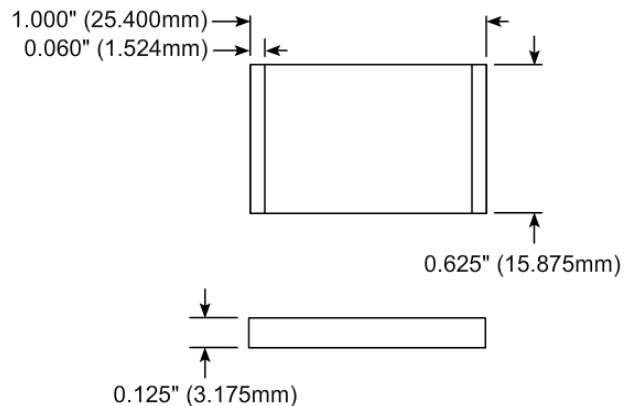
Resistance Value:

10 - 1000 Ω as required. Other values available upon request.

Standard Resistance Tolerance:

± 2% Other tolerances available upon request.

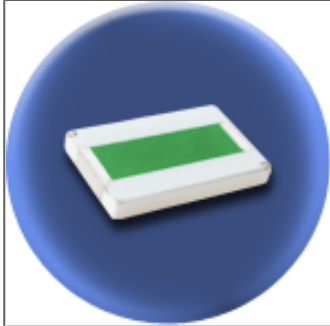
Part Dimensions



Component General, Inc.

P/N: CPT-625-2

Stripline Chip Terminations



Mechanical Specifications

Substrate:

Beryllium Oxide Ceramic.

Resistive Element:

Proprietary thick film.

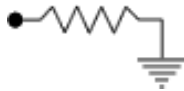
Terminals:

Proprietary Silver.

Tolerance:

± 0.010" unless specified.

Note: Power is based on infinite and ideal heat sink with the heat sink at 100°C



Electrical Specifications

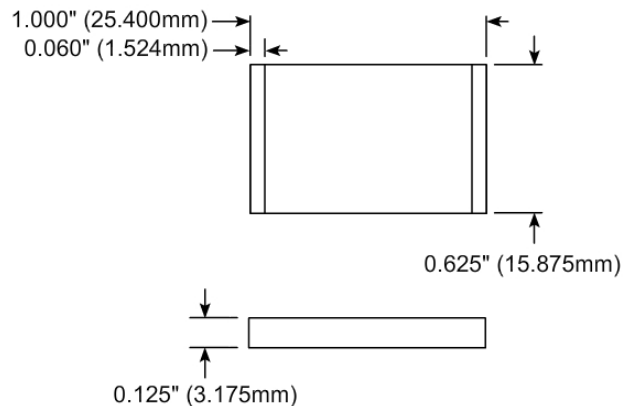
Resistance Value:

10 - 1000 Ω as required. Other values available upon request.

Standard Resistance Tolerance:

± 2% Other tolerances available upon request.

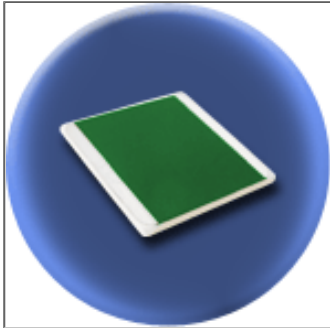
Part Dimensions



Component General, Inc.

P/N: CPT-1000-1

Stripline Chip Terminations



Mechanical Specifications

Substrate:

Beryllium Oxide Ceramic.

Resistive Element:

Proprietary thick film.

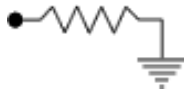
Terminals:

Proprietary Silver.

Tolerance:

± 0.010" unless specified.

Note: Power is based on infinite and ideal heat sink with the heat sink at 100°C



Electrical Specifications

Resistance Value:

10 - 1000 Ω as required. Other values available upon request.

Standard Resistance Tolerance:

± 2% Other tolerances available upon request.

Part Dimensions

