

# Component General, Inc.

## Stripline Base Mounted Terminations

### MECHANICAL SPECIFICATIONS



Heat Sink : Copper, Nickel Plated per QQ-N-290.

Substrate : Beryllium Oxide Ceramic.

Contact : Beryllium Copper, Gold Plated per MIL-G-45204.

Thickness : .004"  $\pm$  .002".

Cover : Alumina Ceramic.

Tolerance :  $\pm$  .010" unless specified

1 hole base mounted terminations product selection chart

CGI P/N	Power	Resistance (Ohms)	Standard Tolerance	Frequency Range	VSWR (Max.)
Note: Click a part number from the list below to see a data sheet for that part.					
<a href="#">CBT-10-1</a>	10 W	50	5 %	DC - 4.0 GHz	1:35:1 1:35:1
<a href="#">CBT-10-2</a>	10 W	50	5 %	DC - 4.0 GHz	1:35:1
<a href="#">CBT-10-3</a>	10 W	50	5 %	DC - 8.0 GHz	1:25:1
<a href="#">CBT-10-4</a>	10 W	50	5 %	DC - 8.0 GHz	1:25:1
<a href="#">CBT-20-1</a>	20 W	50	2 %	DC - 1.0 GHz 1.0 - 2.0 GHz	1:20:1 1:35:1
<a href="#">CBT-20-2</a>	20 W	50	2 %	DC - 1.0 GHz 1.0 - 2.0 GHz	1:20:1 1:35:1
<a href="#">CBT-20-3</a>	20 W	50	2 %	DC - 1.0 GHz 1.0 - 2.0 GHz	1:20:1 1:35:1
<a href="#">CBT-20-4</a>	20 W	50	2 %	DC - 1.0 GHz 1.0 - 2.0 GHz	1:20:1 1:35:1
<a href="#">CBT-20-5</a>	20 W	50	2 %	DC - 1.0 GHz 1.0 - 2.0 GHz	1:20:1 1:35:1
<a href="#">CBT-20-6</a>	20 W	50	2 %	DC - 4.0 GHz	1:25:1
<a href="#">CBT-20-7</a>	20 W	50	2 %	DC - 4.0 GHz	1:25:1
<a href="#">CBT-20-8</a>	20 W	50	2 %	DC - 4.0 GHz	1:25:1
<a href="#">CBT-50-1</a>	50 W	50	5 %	DC - .5 GHz .5 - 1.0 GHz	1:20:1 1:35:1
<a href="#">CBT-50-2</a>	50 W	50	5 %	DC - .5 GHz .5 - 1.0 GHz	1:20:1 1:35:1

# Component General, Inc.

## ■ Stripline Base Mounted Terminations

### ■ MECHANICAL SPECIFICATIONS



Heat Sink : Copper, Nickel Plated per QQ-N-290.

Substrate : Beryllium Oxide Ceramic.

Contact : Beryllium Copper, Gold Plated per MIL-G-45204.

Thickness : .004"  $\pm$  .002".

Cover : Alumina Ceramic.

Tolerance :  $\pm$  .010" unless specified

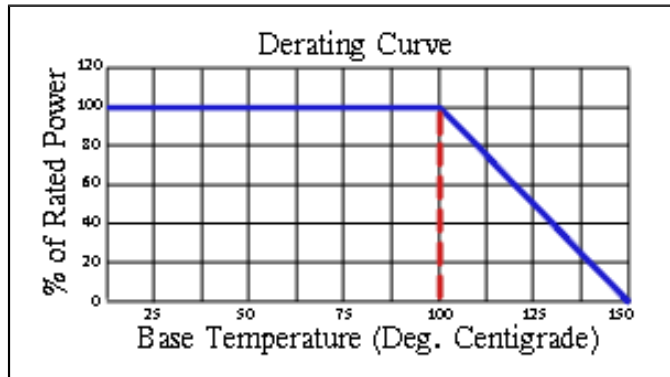
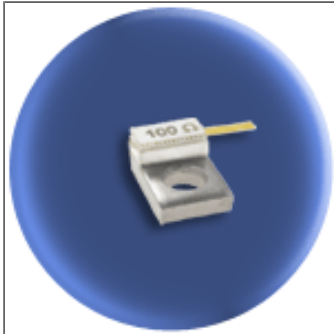
1 hole base mounted terminations product selection chart

CGI P/N	Power	Resistance (Ohms)	Standard Tolerance	Frequency Range	VSWR (Max.)
Note: Click a part number from the list below to see a data sheet for that part.					
<a href="#">CBT-50-3</a>	50 W	50	5 %	DC - .5 GHz .5 - 1.0 GHz	1:20:1 1:35.1
<a href="#">CBT-50-4</a>	50 W	50	5 %	DC - .5 GHz .5 - 1.0 GHz	1:20:1 1:35.1
<a href="#">CBT-50-5</a>	50 W	50	5 %	DC - .5 GHz .5 - 1.0 GHz	1:20:1 1:35.1
<a href="#">CBT-50-6</a>	50 W	50	5 %	DC - .5 GHz .5 - 1.0 GHz	1:20:1 1:35.1
<a href="#">CBT-50-7</a>	50 W	50	5 %	DC - 6.0 GHz	1:25:1
<a href="#">CBT-50-8</a>	50 W	50	5 %	DC - 6.0 GHz	1:25:1
<a href="#">CBT-50-9</a>	50 W	50	5 %	DC - 6.0 GHz	1:25:1
<a href="#">CBT-50-10</a>	50 W	50	5 %	DC - 6.0 GHz	1:25:1
<a href="#">CBT-50-11</a>	50 W	50	5 %	DC - 6.0 GHz	1:25:1
<a href="#">CBT-50-12</a>	50 W	50	5 %	DC - 6.0 GHz	1:25:1

# Component General, Inc.

P/N: CBT-10-1

Stripline Base Mounted Terminations



## Mechanical Specifications

### Covers:

Alumina Ceramic.

### Substrate:

Beryllium Oxide Ceramic.

### Contact:

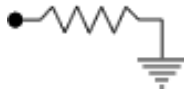
Beryllium Copper, Gold Plated per MIL-G-45204.  
Length: 0.125" Min., Width: 0.040",  
Thickness 0.004" ± 0.002".

### Heat Sink:

Copper, Nickel Plated per QQ-N-290.

### Tolerance:

± 0.010" unless specified.



Note: The use of thermal mounting compound is recommended.

## Electrical Specifications

### Resistance Value:

10 - 1000 Ω or as required. Other values available upon request.

### Frequency Range:

DC - 4.0 GHz

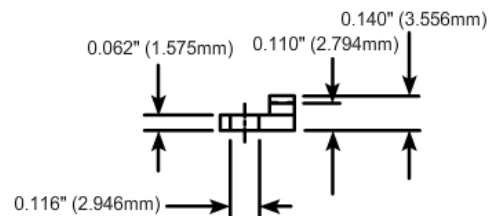
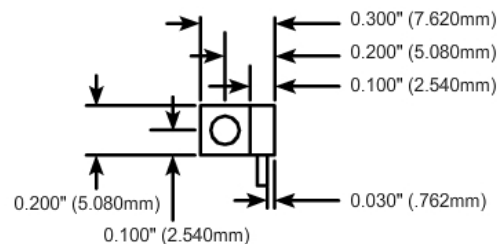
### VSWR (Max.):

1.35:1

### Standard Resistance Tolerance:

± 5% Other tolerances available upon request.

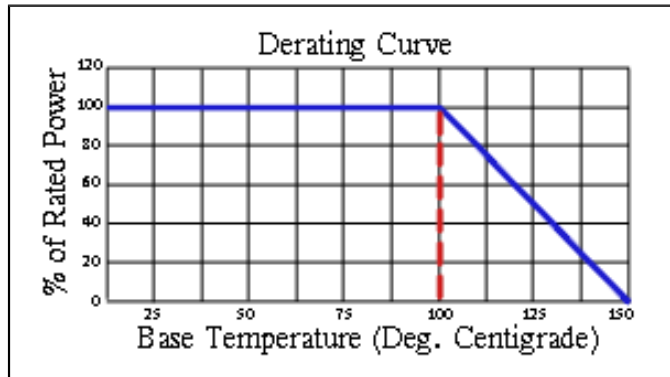
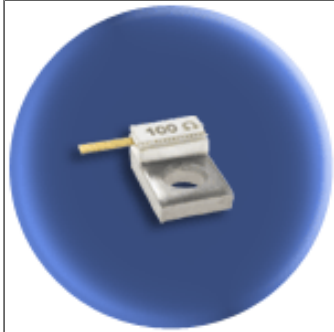
## Part Dimensions



# Component General, Inc.

P/N: CBT-10-2

Stripline Base Mounted Terminations



## Mechanical Specifications

### Covers:

Alumina Ceramic.

### Substrate:

Beryllium Oxide Ceramic.

### Contact:

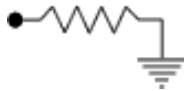
Beryllium Copper, Gold Plated per MIL-G-45204.  
Length: 0.125" Min., Width: 0.040",  
Thickness 0.004"  $\pm$  0.002".

### Heat Sink:

Copper, Nickel Plated per QQ-N-290.

### Tolerance:

$\pm$  0.010" unless specified.



Note: The use of thermal mounting compound is recommended.

## Electrical Specifications

### Resistance Value:

10 - 1000  $\Omega$  or as required. Other values available upon request.

### Frequency Range:

DC - 4.0 GHz

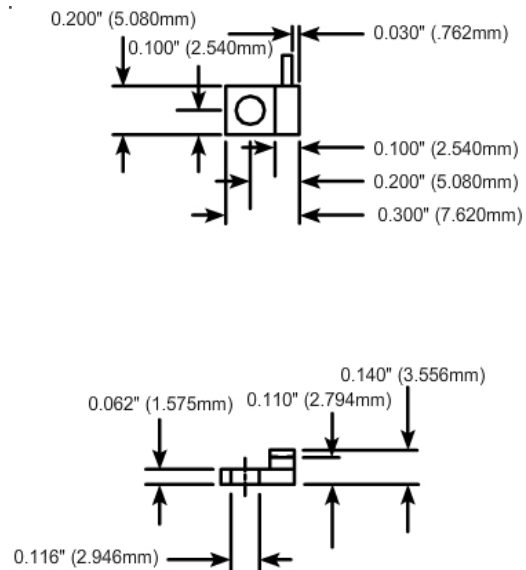
### VSWR (Max.):

1.35:1

### Standard Resistance Tolerance:

$\pm$  5% Other tolerances available upon request.

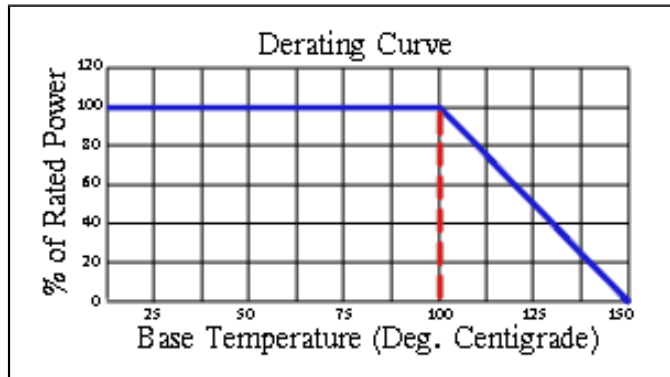
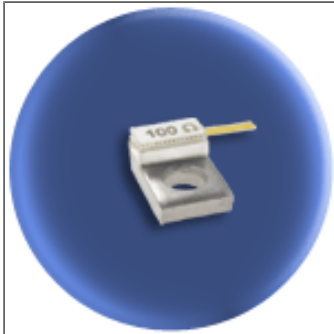
## Part Dimensions



# Component General, Inc.

P/N: CBT-10-3

Stripline Base Mounted Terminations



## Mechanical Specifications

### Covers:

Alumina Ceramic.

### Substrate:

Beryllium Oxide Ceramic.

### Contact:

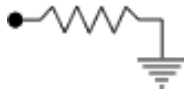
Beryllium Copper, Gold Plated per MIL-G-45204.  
Length: 0.125" Min., Width: 0.040",  
Thickness 0.004" ± 0.002".

### Heat Sink:

Copper, Nickel Plated per QQ-N-290.

### Tolerance:

± 0.010" unless specified.



Note: The use of thermal mounting compound is recommended.

## Electrical Specifications

### Resistance Value:

10 - 1000 Ω or as required. Other values available upon request.

### Frequency Range:

DC - 8.0 GHz

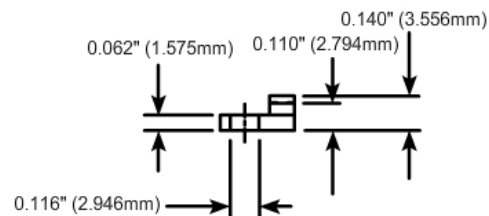
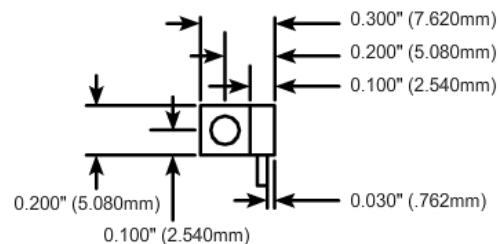
### VSWR (Max.):

1.25:1

### Standard Resistance Tolerance:

± 5% Other tolerances available upon request.

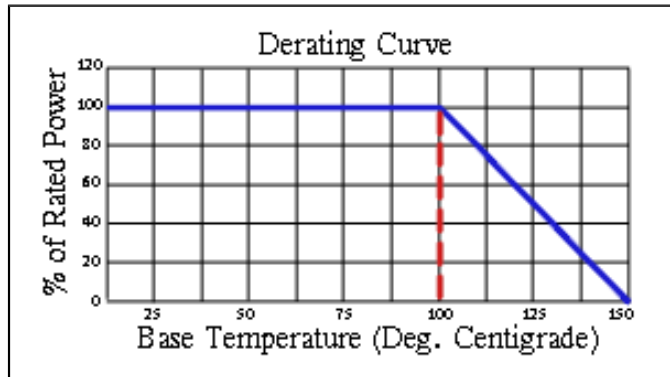
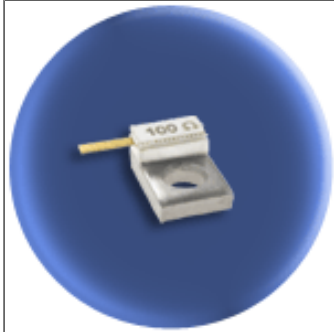
## Part Dimensions



# Component General, Inc.

P/N: CBT-10-4

Stripline Base Mounted Terminations



## Mechanical Specifications

### Covers:

Alumina Ceramic.

### Substrate:

Beryllium Oxide Ceramic.

### Contact:

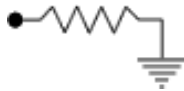
Beryllium Copper, Gold Plated per MIL-G-45204.  
Length: 0.125" Min., Width: 0.040",  
Thickness 0.004"  $\pm$  0.002".

### Heat Sink:

Copper, Nickel Plated per QQ-N-290.

### Tolerance:

$\pm$  0.010" unless specified.



Note: The use of thermal mounting compound is recommended.

## Electrical Specifications

### Resistance Value:

10 - 1000  $\Omega$  or as required. Other values available upon request.

### Frequency Range:

DC - 8.0 GHz

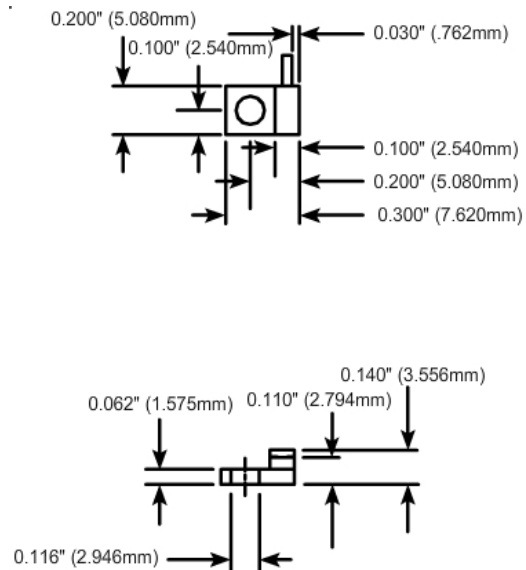
### VSWR (Max.):

1.25:1

### Standard Resistance Tolerance:

$\pm$  5% Other tolerances available upon request.

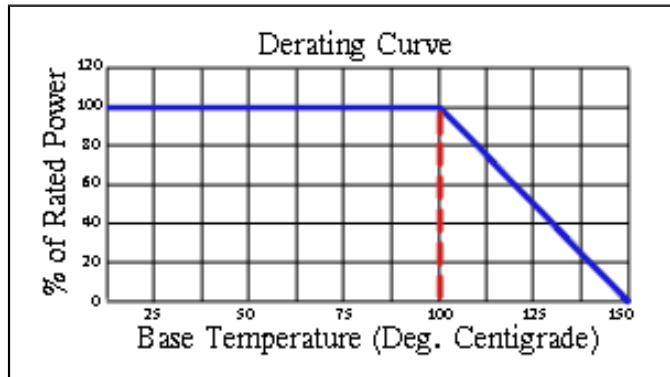
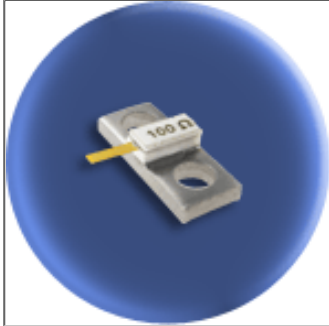
## Part Dimensions



# Component General, Inc.

P/N: CBT-10-5

Stripline Base Mounted Terminations



## Mechanical Specifications

### Covers:

Alumina Ceramic.

### Substrate:

Beryllium Oxide Ceramic.

### Contact:

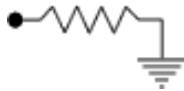
Beryllium Copper, Gold Plated per MIL-G-45204.  
Length: 0.125" Min., Width: 0.040",  
Thickness 0.004" ± 0.002".

### Heat Sink:

Copper, Nickel Plated per QQ-N-290.

### Tolerance:

± 0.010" unless specified.



Note: The use of thermal mounting compound is recommended.

## Electrical Specifications

### Resistance Value:

10 - 1000 Ω or as required. Other values available upon request.

### Frequency Range:

DC - 8.0 GHz

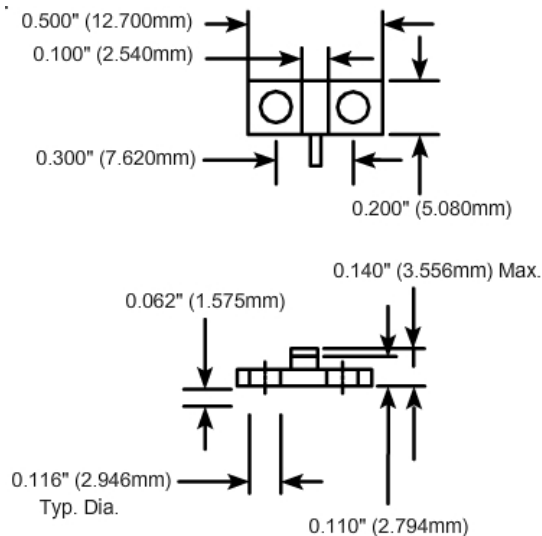
### VSWR (Max.):

1.25:1

### Standard Resistance Tolerance:

± 5% Other tolerances available upon request.

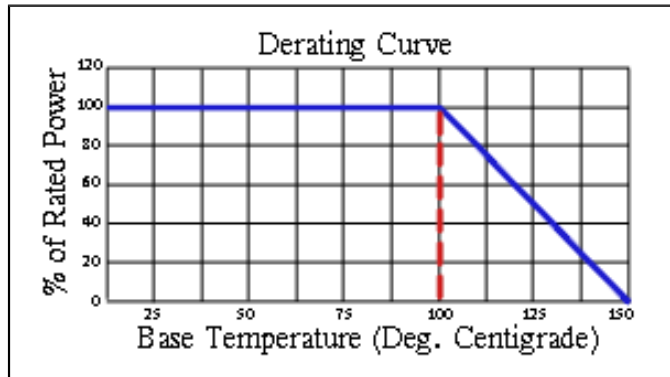
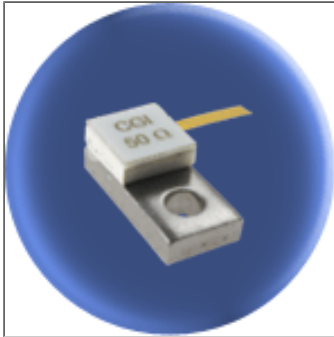
## Part Dimensions



# Component General, Inc.

P/N: CBT-20-1

Stripline Base Mounted Terminations



## Mechanical Specifications

### Covers:

Alumina Ceramic.

### Substrate:

Beryllium Oxide Ceramic.

### Contact:

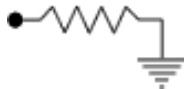
Beryllium Copper, Gold Plated per MIL-G-45204.  
Length: 0.250" Min., Width: 0.060",  
Thickness 0.004" ± 0.002".

### Heat Sink:

Copper, Nickel Plated per QQ-N-290.

### Tolerance:

± 0.010" unless specified.



Note: The use of thermal mounting compound is recommended.

## Electrical Specifications

### Resistance Value:

10 - 1000 Ω or as required. Other values available upon request.

### Frequency Range:

DC - 1.0 GHz  
1.0 - 2.0 GHz

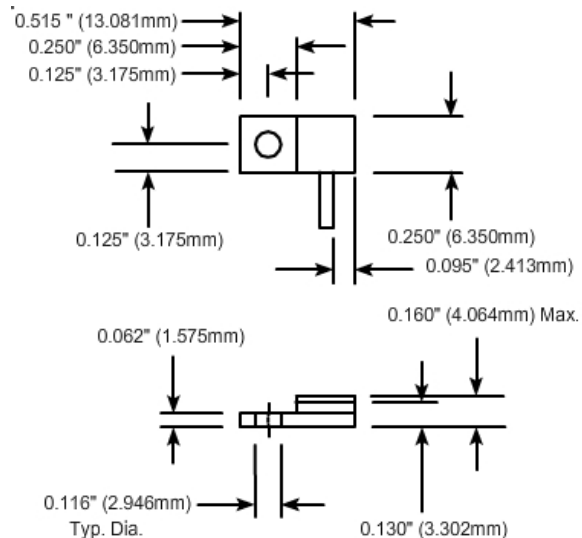
### VSWR (Max.):

1.201  
1.35:1

### Standard Resistance Tolerance:

± 2% Other tolerances available upon request.

## Part Dimensions

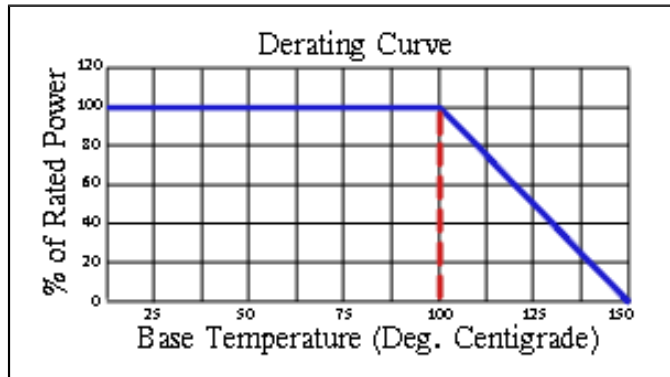
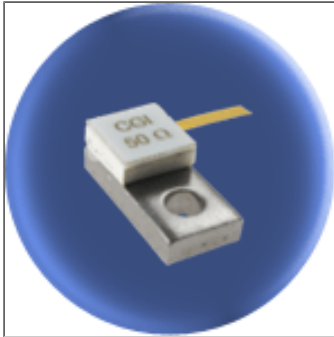




# Component General, Inc.

P/N: CBT-20-2

Stripline Base Mounted Terminations



## Mechanical Specifications

### Covers:

Alumina Ceramic.

### Substrate:

Beryllium Oxide Ceramic.

### Contact:

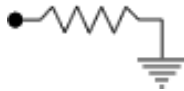
Beryllium Copper, Gold Plated per MIL-G-45204.  
Length: 0.250" Min., Width: 0.060",  
Thickness 0.004" ± 0.002".

### Heat Sink:

Copper, Nickel Plated per QQ-N-290.

### Tolerance:

± 0.010" unless specified.



Note: The use of thermal mounting compound is recommended.

## Electrical Specifications

### Resistance Value:

10 - 1000 Ω or as required. Other values available upon request.

### Frequency Range:

DC - 1.0 GHz  
1.0 - 2.0 GHz

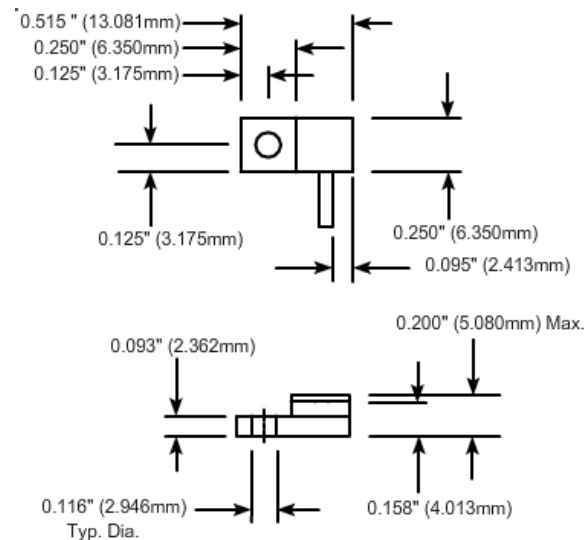
### VSWR (Max.):

1.201  
1.35:1

### Standard Resistance Tolerance:

± 2% Other tolerances available upon request.

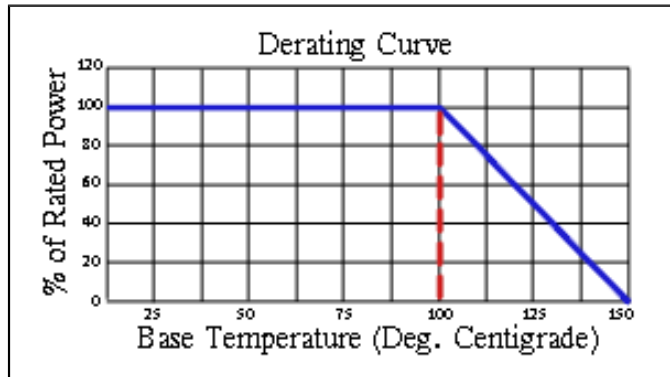
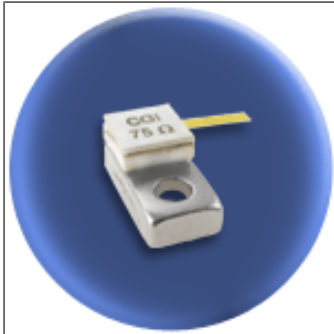
## Part Dimensions



# Component General, Inc.

P/N: CBT-20-3

Stripline Base Mounted Terminations



## Mechanical Specifications

### Covers:

Alumina Ceramic.

### Substrate:

Beryllium Oxide Ceramic.

### Contact:

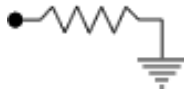
Beryllium Copper, Gold Plated per MIL-G-45204.  
Length: 0.250" Min., Width: 0.060",  
Thickness 0.004" ± 0.002".

### Heat Sink:

Copper, Nickel Plated per QQ-N-290.

### Tolerance:

± 0.010" unless specified.



Note: The use of thermal mounting compound is recommended.

## Electrical Specifications

### Resistance Value:

10 - 1000 Ω or as required. Other values available upon request.

### Frequency Range:

DC - 1.0 GHz  
1.0 - 2.0 GHz

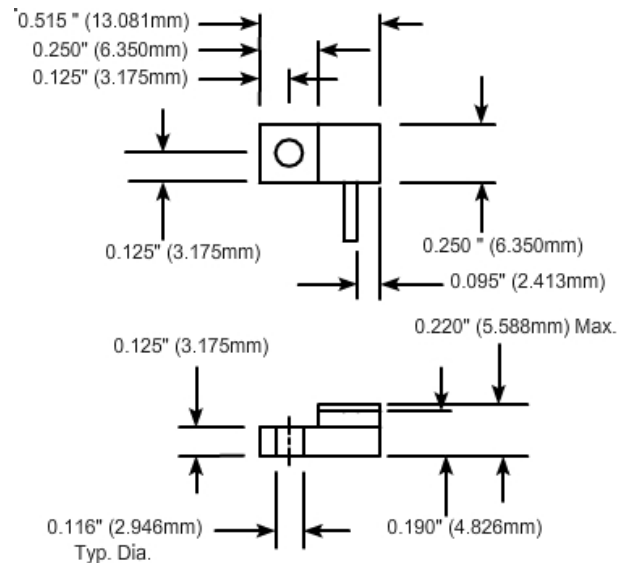
### VSWR (Max.):

1.201  
1.35:1

### Standard Resistance Tolerance:

± 2% Other tolerances available upon request.

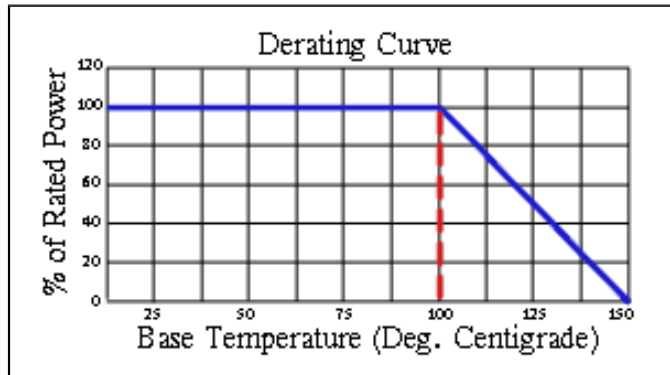
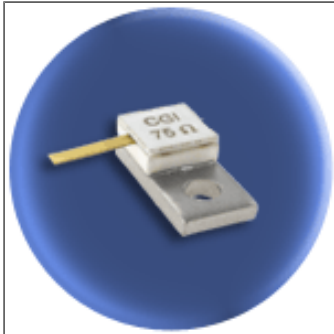
## Part Dimensions



# Component General, Inc.

P/N: CBT-20-4

Stripline Base Mounted Terminations



## Mechanical Specifications

### Covers:

Alumina Ceramic.

### Substrate:

Beryllium Oxide Ceramic.

### Contact:

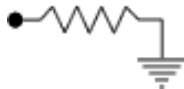
Beryllium Copper, Gold Plated per MIL-G-45204. Length: 0.250" Min., Width: 0.060", Thickness 0.004" ± 0.002".

### Heat Sink:

Copper, Nickel Plated per QQ-N-290.

### Tolerance:

± 0.010" unless specified.



Note: The use of thermal mounting compound is recommended.

## Electrical Specifications

### Resistance Value:

10 - 1000 Ω or as required. Other values available upon request.

### Frequency Range:

DC - 1.0 GHz  
1.0 - 2.0 GHz

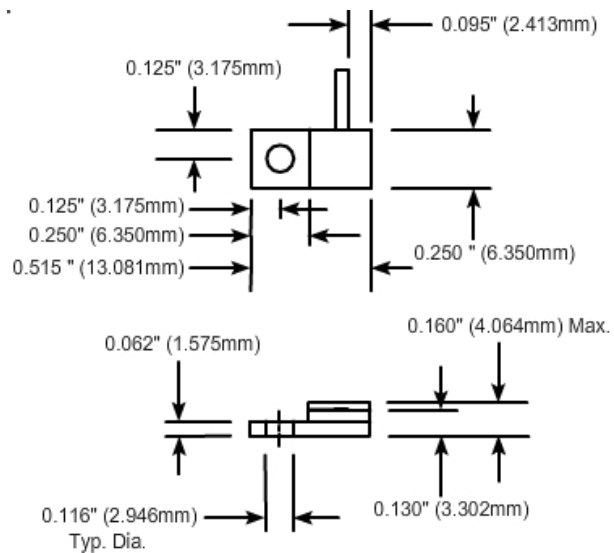
### VSWR (Max.):

1.201  
1.35:1

### Standard Resistance Tolerance:

± 2% Other tolerances available upon request.

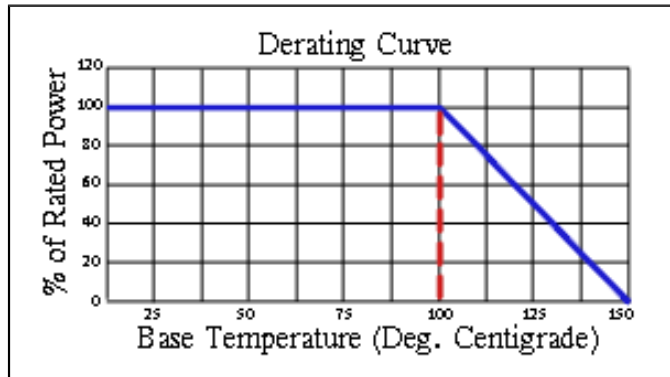
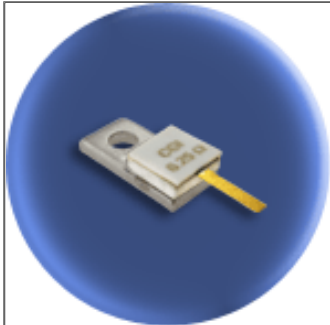
## Part Dimensions



# Component General, Inc.

P/N: CBT-20-5

Stripline Base Mounted Terminations



## Mechanical Specifications

### Covers:

Alumina Ceramic.

### Substrate:

Beryllium Oxide Ceramic.

### Contact:

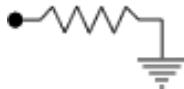
Beryllium Copper, Gold Plated per MIL-G-45204.  
Length: 0.250" Min., Width: 0.060",  
Thickness 0.004" ± 0.002".

### Heat Sink:

Copper, Nickel Plated per QQ-N-290.

### Tolerance:

± 0.010" unless specified.



Note: The use of thermal mounting compound is recommended.

## Electrical Specifications

### Resistance Value:

10 - 1000 Ω or as required. Other values available upon request.

### Frequency Range:

DC - 1.0 GHz  
1.0 - 2.0 GHz

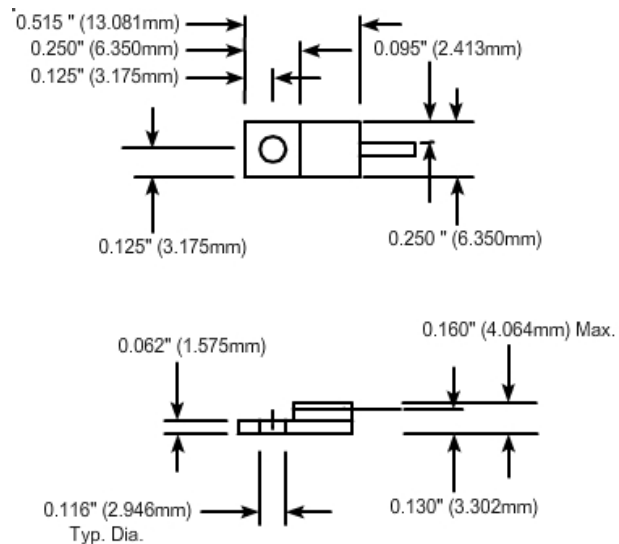
### VSWR (Max.):

1.201  
1.35:1

### Standard Resistance Tolerance:

± 2% Other tolerances available upon request.

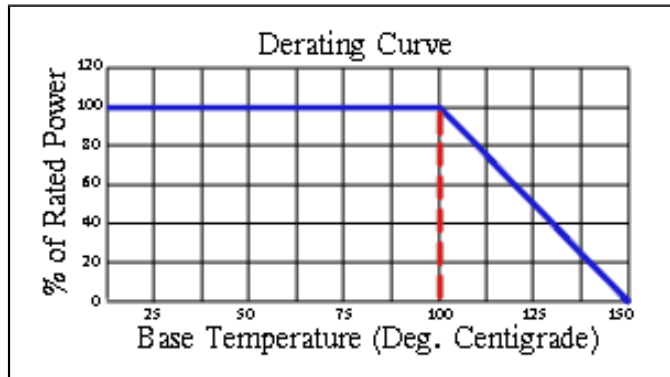
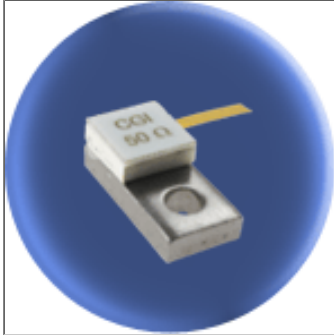
## Part Dimensions



# Component General, Inc.

P/N: CBT-20-6

Stripline Base Mounted Terminations



## Mechanical Specifications

### Covers:

Alumina Ceramic.

### Substrate:

Beryllium Oxide Ceramic.

### Contact:

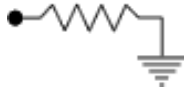
Beryllium Copper, Gold Plated per MIL-G-45204.  
Length: 0.250" Min., Width: 0.060",  
Thickness 0.004" ± 0.002".

### Heat Sink:

Copper, Nickel Plated per QQ-N-290.

### Tolerance:

± 0.010" unless specified.



Note: The use of thermal mounting compound is recommended.

## Electrical Specifications

### Resistance Value:

10 - 1000 Ω or as required. Other values available upon request.

### Frequency Range:

DC - 4.0 GHz

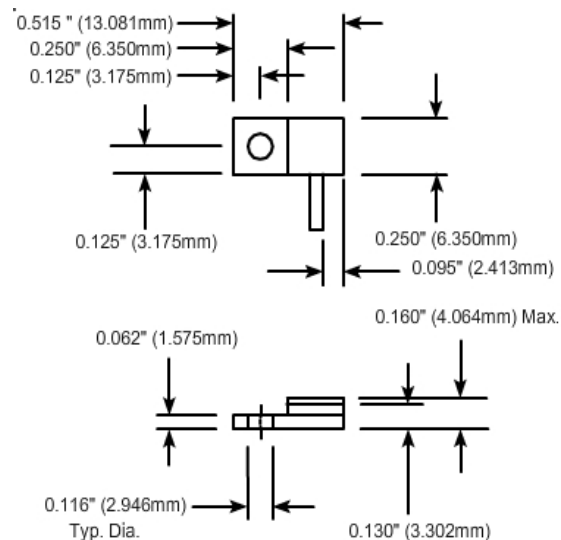
### VSWR (Max.):

1.25:1

### Standard Resistance Tolerance:

± 5% Other tolerances available upon request.

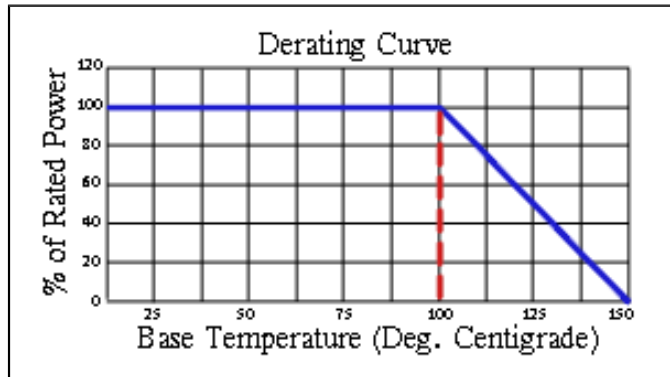
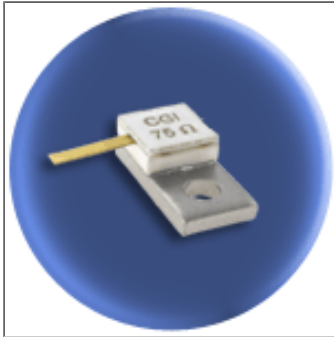
## Part Dimensions



# Component General, Inc.

P/N: CBT-20-7

Stripline Base Mounted Terminations



## Mechanical Specifications

### Covers:

Alumina Ceramic.

### Substrate:

Beryllium Oxide Ceramic.

### Contact:

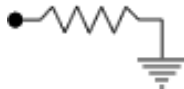
Beryllium Copper, Gold Plated per MIL-G-45204.  
Length: 0.250" Min., Width: 0.060",  
Thickness 0.004" ± 0.002".

### Heat Sink:

Copper, Nickel Plated per QQ-N-290.

### Tolerance:

± 0.010" unless specified.



Note: The use of thermal mounting compound is recommended.

## Electrical Specifications

### Resistance Value:

10 - 1000 Ω or as required. Other values available upon request.

### Frequency Range:

DC - 4.0 GHz

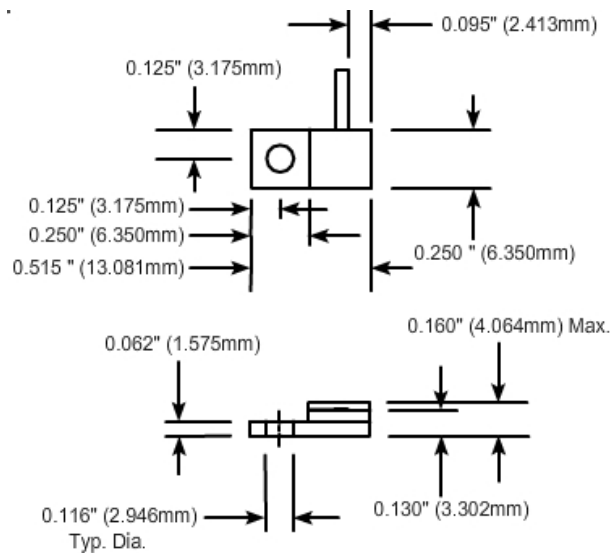
### VSWR (Max.):

1.25:1

### Standard Resistance Tolerance:

± 5% Other tolerances available upon request.

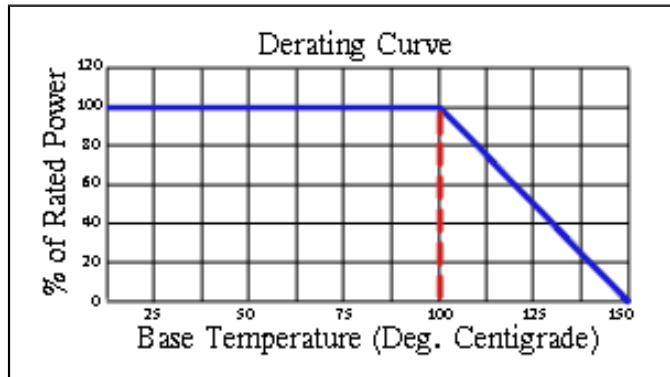
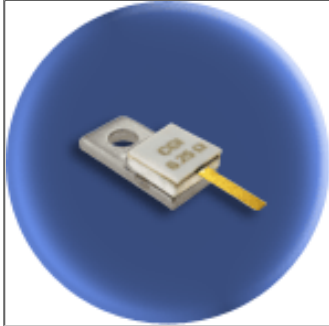
## Part Dimensions



# Component General, Inc.

P/N: CBT-20-8

Stripline Base Mounted Terminations



## Mechanical Specifications

### Covers:

Alumina Ceramic.

### Substrate:

Beryllium Oxide Ceramic.

### Contact:

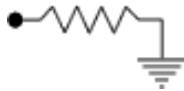
Beryllium Copper, Gold Plated per MIL-G-45204.  
Length: 0.250" Min., Width: 0.060",  
Thickness 0.004" ± 0.002".

### Heat Sink:

Copper, Nickel Plated per QQ-N-290.

### Tolerance:

± 0.010" unless specified.



Note: The use of thermal mounting compound is recommended.

## Electrical Specifications

### Resistance Value:

10 - 1000 Ω or as required. Other values available upon request.

### Frequency Range: VSWR (Max.):

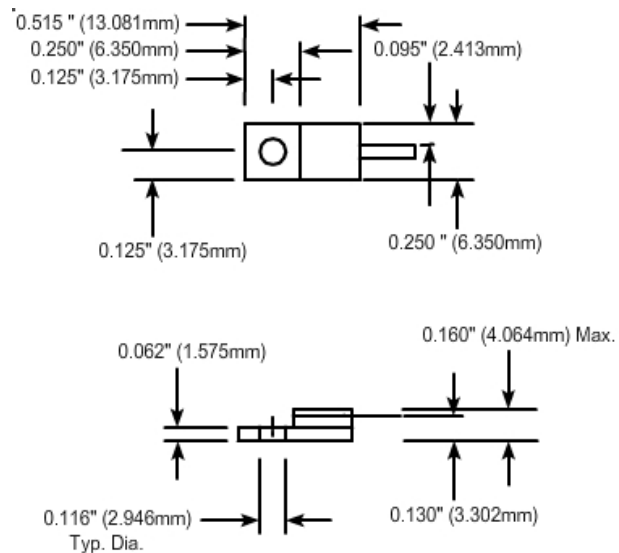
DC - 4.0 GHz

1.25:1

### Standard Resistance Tolerance:

± 5% Other tolerances available upon request.

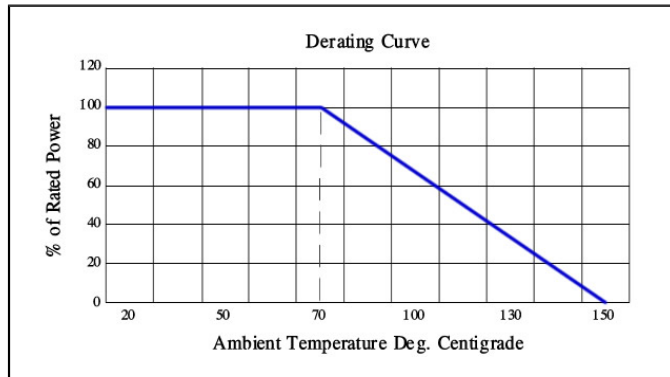
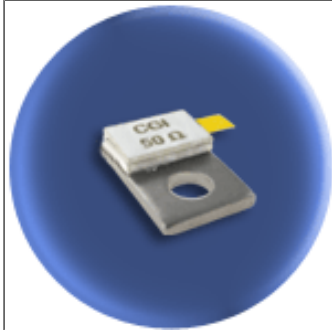
## Part Dimensions



# Component General, Inc.

P/N: CBT-50-1

## Stripline Base Mounted Terminations



### Mechanical Specifications

**Covers:**

Alumina Ceramic.

**Substrate:**

Beryllium Oxide Ceramic.

**Contact:**

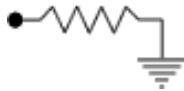
Beryllium Copper, Gold Plated per MIL-G-45204.  
Length: 0.125" Min., Width: 0.120",  
Thickness 0.004" ± 0.002".

**Heat Sink:**

Copper, Nickel Plated per QQ-N-290.

**Tolerance:**

± 0.010" unless specified.



Note: The use of thermal mounting compound is recommended.

### Electrical Specifications

**Resistance Value:**

10 - 1000 Ω or as required. Other values available upon request.

**Frequency Range:**

DC - .5 GHz  
.5 - 1.0 GHz

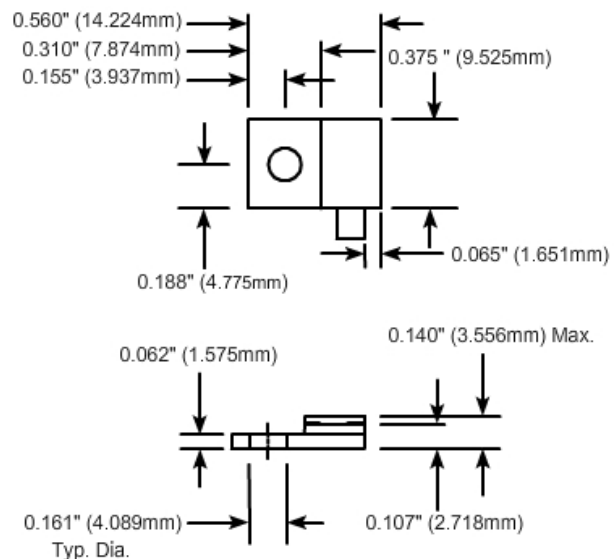
**VSWR (Max.):**

1.20:1  
1.35:1

**Standard Resistance Tolerance:**

± 5% Other tolerances available upon request.

### Part Dimensions

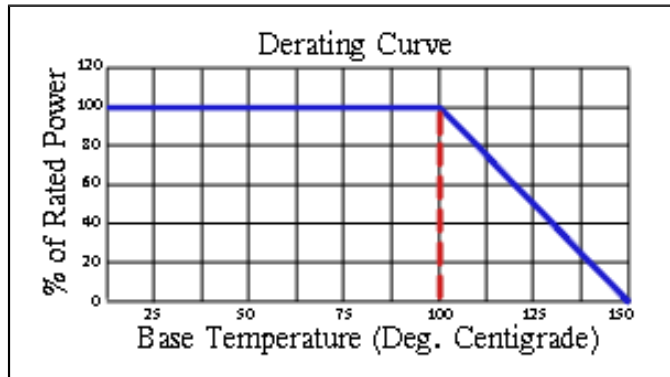




# Component General, Inc.

P/N: CBT-50-12

Stripline Base Mounted Terminations



## Mechanical Specifications

### Covers:

Alumina Ceramic.

### Substrate:

Beryllium Oxide Ceramic.

### Contact:

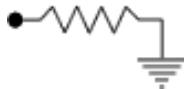
Beryllium Copper, Gold Plated per MIL-G-45204.  
Length: 0.125" Min., Width: 0.040",  
Thickness 0.004" ± 0.002".

### Heat Sink:

Copper, Nickel Plated per QQ-N-290.

### Tolerance:

± 0.010" unless specified.



Note: The use of thermal mounting compound is recommended.

## Electrical Specifications

### Resistance Value:

10 - 1000 Ω or as required. Other values available upon request.

### Frequency Range:

DC - 6.0 GHz

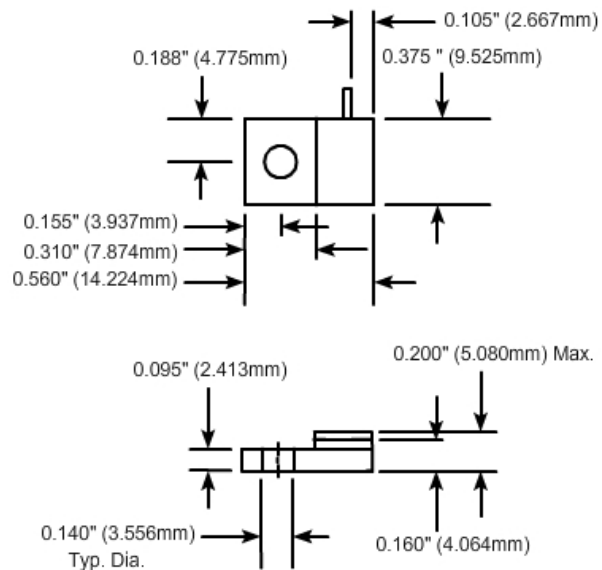
### VSWR (Max.):

1.25:1

### Standard Resistance Tolerance:

± 5% Other tolerances available upon request.

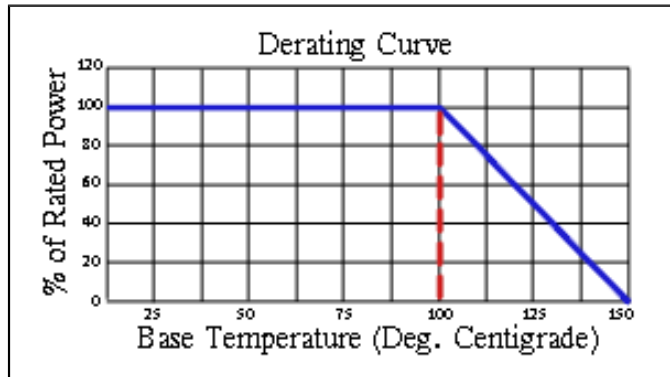
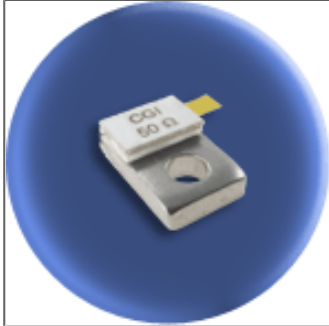
## Part Dimensions



# Component General, Inc.

P/N: CBT-50-2

Stripline Base Mounted Terminations



## Mechanical Specifications

### Covers:

Alumina Ceramic.

### Substrate:

Beryllium Oxide Ceramic.

### Contact:

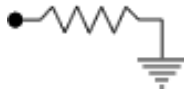
Beryllium Copper, Gold Plated per MIL-G-45204.  
Length: 0.125" Min., Width: 0.120",  
Thickness 0.004"  $\pm$  0.002".

### Heat Sink:

Copper, Nickel Plated per QQ-N-290.

### Tolerance:

$\pm$  0.010" unless specified.



Note: The use of thermal mounting compound is recommended.

## Electrical Specifications

### Resistance Value:

10 - 1000  $\Omega$  or as  
required. Other values  
available upon request.

### Frequency Range:

DC - .5 GHz  
.5 - 1.0 GHz

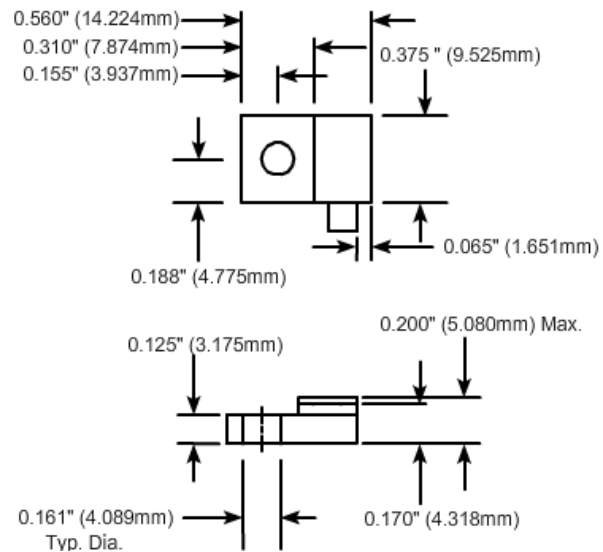
### VSWR (Max.):

1.20:1  
1.35:1

### Standard Resistance Tolerance:

$\pm$  5% Other tolerances available upon request.

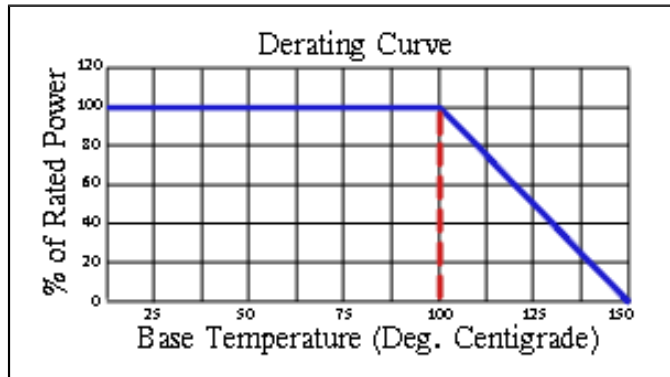
## Part Dimensions



# Component General, Inc.

P/N: CBT-50-3

Stripline Base Mounted Terminations



## Mechanical Specifications

### Covers:

Alumina Ceramic.

### Substrate:

Beryllium Oxide Ceramic.

### Contact:

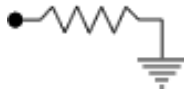
Beryllium Copper, Gold Plated per MIL-G-45204.  
Length: 0.125" Min., Width: 0.120",  
Thickness 0.004" ± 0.002".

### Heat Sink:

Copper, Nickel Plated per QQ-N-290.

### Tolerance:

± 0.010" unless specified.



Note: The use of thermal mounting compound is recommended.

## Electrical Specifications

### Resistance Value:

10 - 1000 Ω or as required. Other values available upon request.

### Frequency Range:

DC - .5 GHz  
.5 - 1.0 GHz

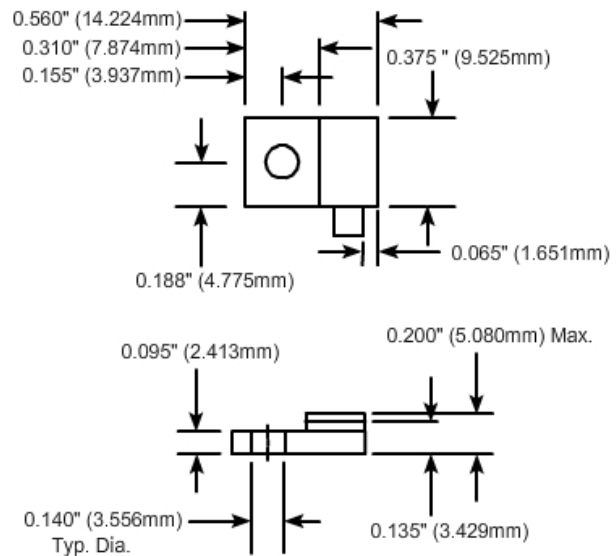
### VSWR (Max.):

1.20:1  
1.35:1

### Standard Resistance Tolerance:

± 5% Other tolerances available upon request.

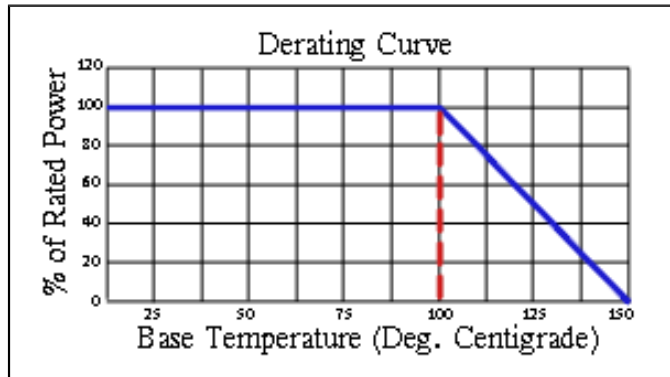
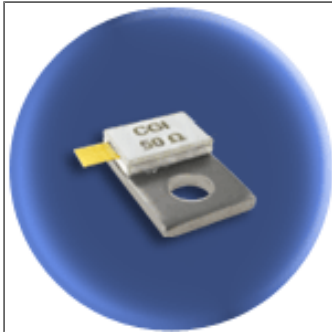
## Part Dimensions



# Component General, Inc.

P/N: CBT-50-4

Stripline Base Mounted Terminations



## Mechanical Specifications

### Covers:

Alumina Ceramic.

### Substrate:

Beryllium Oxide Ceramic.

### Contact:

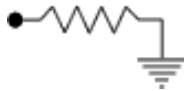
Beryllium Copper, Gold Plated per MIL-G-45204.  
Length: 0.125" Min., Width: 0.120",  
Thickness 0.004" ± 0.002".

### Heat Sink:

Copper, Nickel Plated per QQ-N-290.

### Tolerance:

± 0.010" unless specified.



Note: The use of thermal mounting compound is recommended.

## Electrical Specifications

### Resistance Value:

10 - 1000 Ω or as required. Other values available upon request.

### Frequency Range:

DC - .5 GHz  
.5 - 1.0 GHz

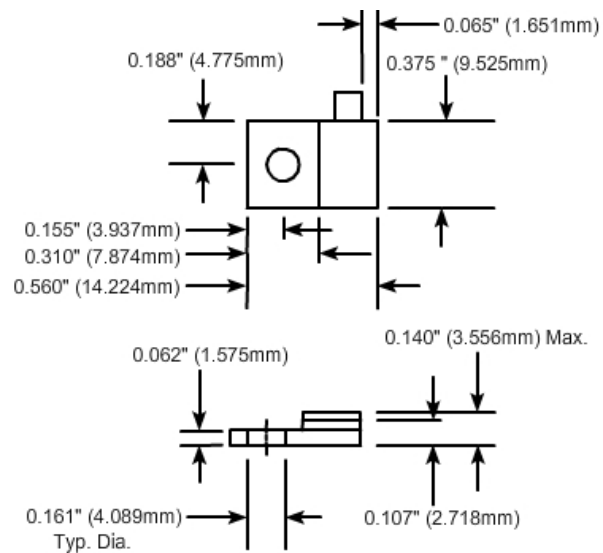
### VSWR (Max.):

1.20:1  
1.35:1

### Standard Resistance Tolerance:

± 5% Other tolerances available upon request.

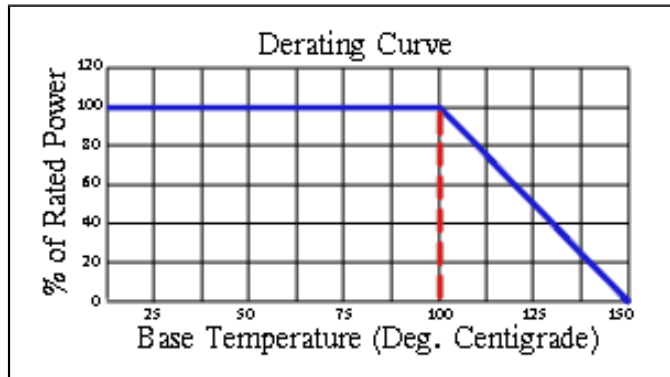
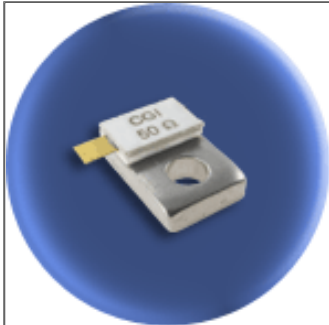
## Part Dimensions



# Component General, Inc.

P/N: CBT-50-5

Stripline Base Mounted Terminations



## Mechanical Specifications

### Covers:

Alumina Ceramic.

### Substrate:

Beryllium Oxide Ceramic.

### Contact:

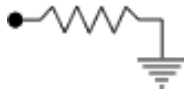
Beryllium Copper, Gold Plated per MIL-G-45204.  
Length: 0.125" Min., Width: 0.120",  
Thickness 0.004" ± 0.002".

### Heat Sink:

Copper, Nickel Plated per QQ-N-290.

### Tolerance:

± 0.010" unless specified.



Note: The use of thermal mounting compound is recommended.

## Electrical Specifications

### Resistance Value:

10 - 1000 Ω or as required. Other values available upon request.

### Frequency Range:

DC - .5 GHz  
.5 - 1.0 GHz

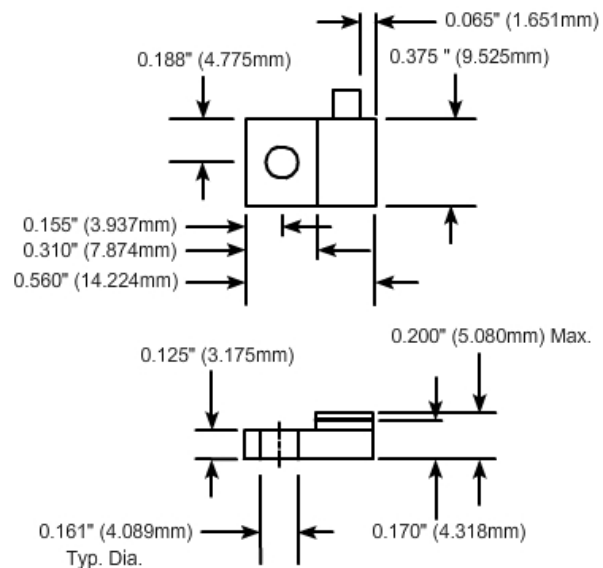
### VSWR (Max.):

1.20:1  
1.35:1

### Standard Resistance Tolerance:

± 5% Other tolerances available upon request.

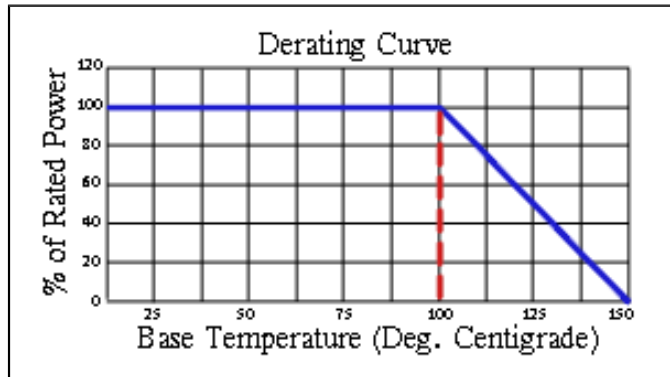
## Part Dimensions



# Component General, Inc.

P/N: CBT-50-6

Stripline Base Mounted Terminations



## Mechanical Specifications

### Covers:

Alumina Ceramic.

### Substrate:

Beryllium Oxide Ceramic.

### Contact:

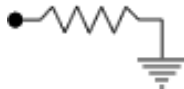
Beryllium Copper, Gold Plated per MIL-G-45204.  
Length: 0.125" Min., Width: 0.120",  
Thickness 0.004" ± 0.002".

### Heat Sink:

Copper, Nickel Plated per QQ-N-290.

### Tolerance:

± 0.010" unless specified.



Note: The use of thermal mounting compound is recommended.

## Electrical Specifications

### Resistance Value:

10 - 1000 Ω or as required. Other values available upon request.

### Frequency Range:

DC - .5 GHz  
.5 - 1.0 GHz

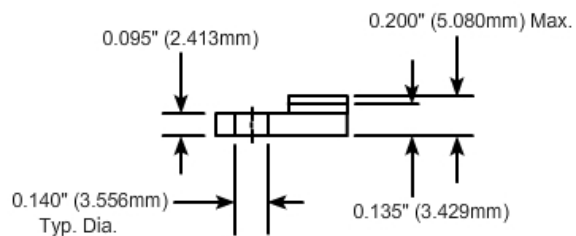
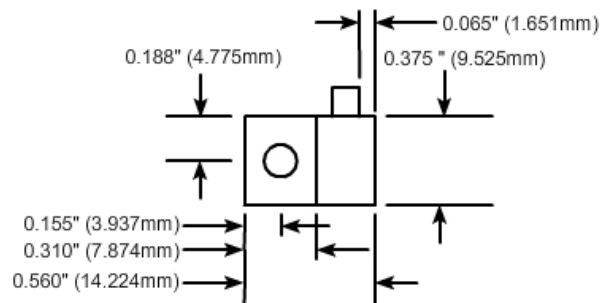
### VSWR (Max.):

1.20:1  
1.35:1

### Standard Resistance Tolerance:

± 5% Other tolerances available upon request.

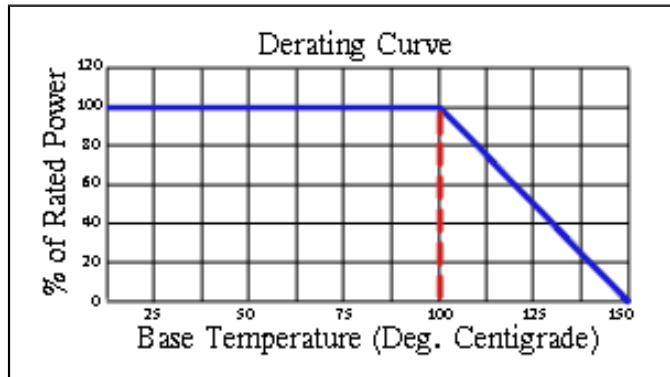
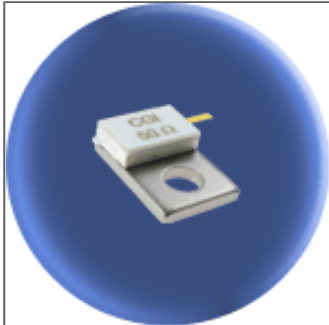
## Part Dimensions



# Component General, Inc.

P/N: CBT-50-7

Stripline Base Mounted Terminations



## Mechanical Specifications

### Covers:

Alumina Ceramic.

### Substrate:

Beryllium Oxide Ceramic.

### Contact:

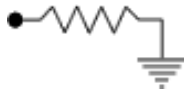
Beryllium Copper, Gold Plated per MIL-G-45204.  
Length: 0.125" Min., Width: 0.040",  
Thickness 0.004" ± 0.002".

### Heat Sink:

Copper, Nickel Plated per QQ-N-290.

### Tolerance:

± 0.010" unless specified.



Note: The use of thermal mounting compound is recommended.

## Electrical Specifications

### Resistance Value:

10 - 1000 Ω or as required. Other values available upon request.

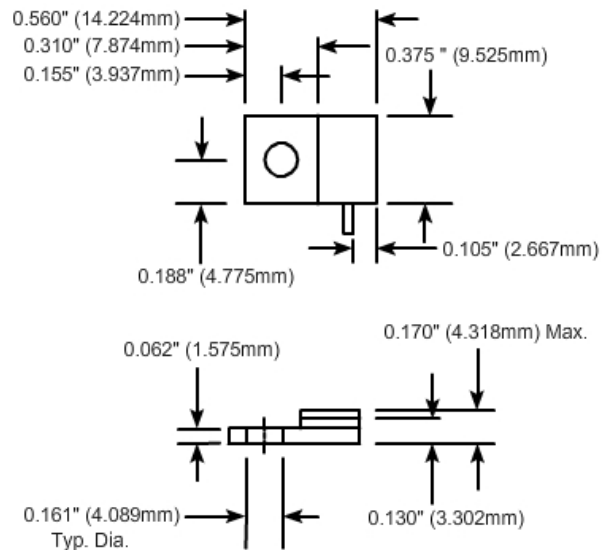
### Frequency Range: VSWR (Max.):

DC - 6.0 GHz 1.25:1

### Standard Resistance Tolerance:

± 5% Other tolerances available upon request.

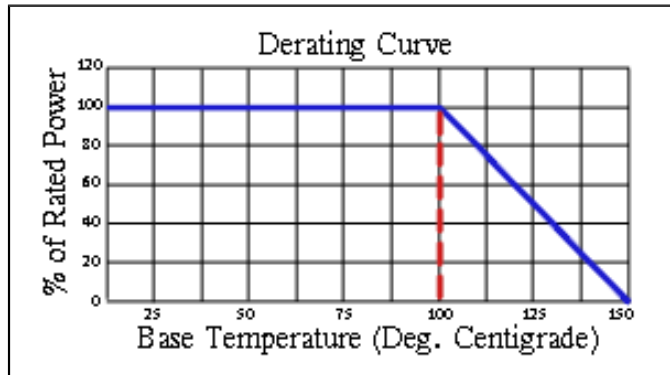
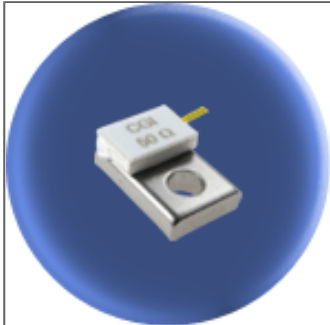
## Part Dimensions



# Component General, Inc.

P/N: CBT-50-8

Stripline Base Mounted Terminations



## Mechanical Specifications

### Covers:

Alumina Ceramic.

### Substrate:

Beryllium Oxide Ceramic.

### Contact:

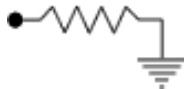
Beryllium Copper, Gold Plated per MIL-G-45204.  
Length: 0.125" Min., Width: 0.040",  
Thickness 0.004" ± 0.002".

### Heat Sink:

Copper, Nickel Plated per QQ-N-290.

### Tolerance:

± 0.010" unless specified.



Note: The use of thermal mounting compound is recommended.

## Electrical Specifications

### Resistance Value:

10 - 1000 Ω or as required. Other values available upon request.

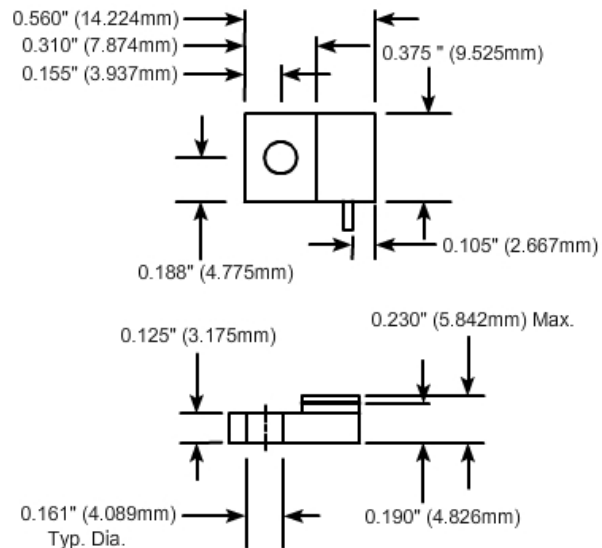
### Frequency Range: VSWR (Max.):

DC - 6.0 GHz 1.25:1

### Standard Resistance Tolerance:

± 5% Other tolerances available upon request.

## Part Dimensions

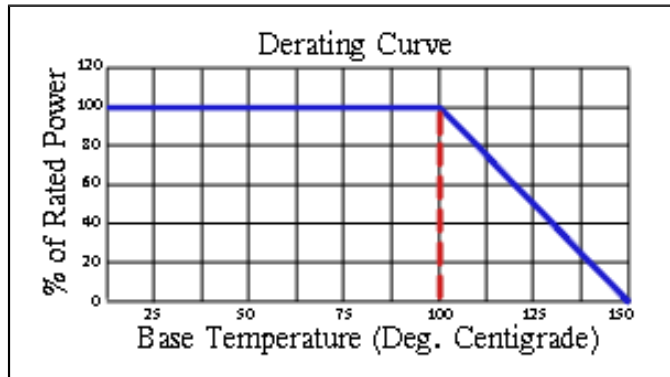
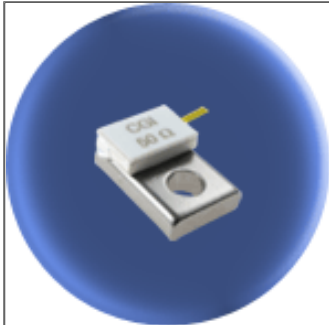




# Component General, Inc.

P/N: CBT-50-9

Stripline Base Mounted Terminations



## Mechanical Specifications

### Covers:

Alumina Ceramic.

### Substrate:

Beryllium Oxide Ceramic.

### Contact:

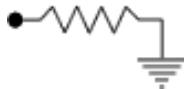
Beryllium Copper, Gold Plated per MIL-G-45204. Length: 0.125" Min., Width: 0.040", Thickness 0.004"  $\pm$  0.002".

### Heat Sink:

Copper, Nickel Plated per QQ-N-290.

### Tolerance:

$\pm$  0.010" unless specified.



Note: The use of thermal mounting compound is recommended.

## Electrical Specifications

### Resistance Value:

10 - 1000  $\Omega$  or as required. Other values available upon request.

### Frequency Range:

DC - 6.0 GHz

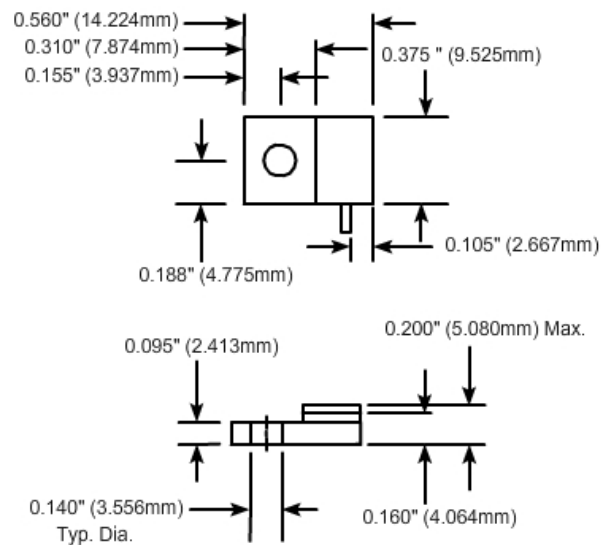
### VSWR (Max.):

1.25:1

### Standard Resistance Tolerance:

$\pm$  5% Other tolerances available upon request.

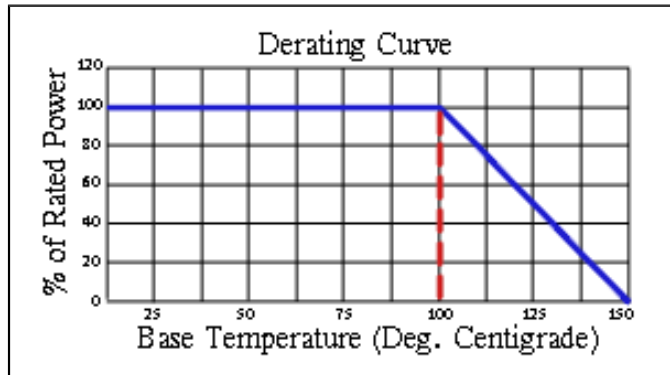
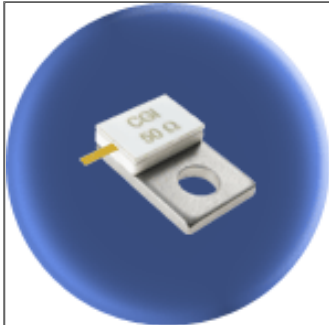
## Part Dimensions



# Component General, Inc.

P/N: CBT-50-10

Stripline Base Mounted Terminations



## Mechanical Specifications

### Covers:

Alumina Ceramic.

### Substrate:

Beryllium Oxide Ceramic.

### Contact:

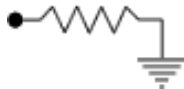
Beryllium Copper, Gold Plated per MIL-G-45204.  
Length: 0.125" Min., Width: 0.040",  
Thickness 0.004"  $\pm$  0.002".

### Heat Sink:

Copper, Nickel Plated per QQ-N-290.

### Tolerance:

$\pm$  0.010" unless specified.



Note: The use of thermal mounting compound is recommended.

## Electrical Specifications

### Resistance Value:

10 - 1000  $\Omega$  or as required. Other values available upon request.

### Frequency Range: VSWR (Max.):

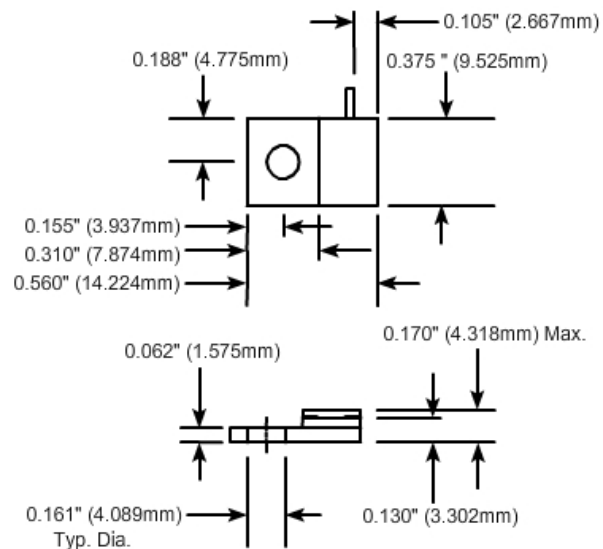
DC - 6.0 GHz

1.25:1

### Standard Resistance Tolerance:

$\pm$  5% Other tolerances available upon request.

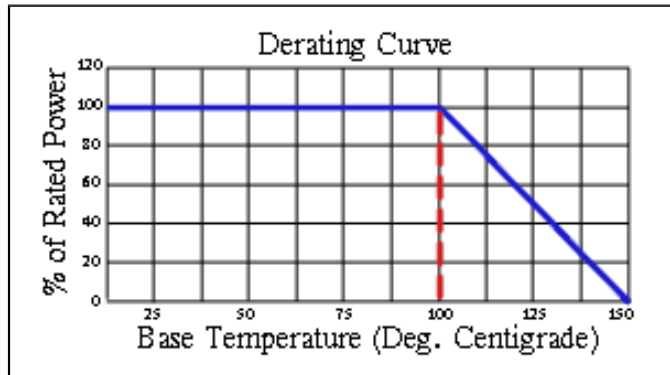
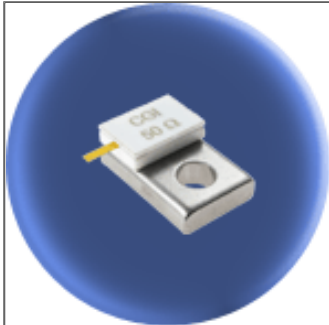
## Part Dimensions



# Component General, Inc.

P/N: CBT-50-11

Stripline Base Mounted Terminations



## Mechanical Specifications

### Covers:

Alumina Ceramic.

### Substrate:

Beryllium Oxide Ceramic.

### Contact:

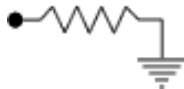
Beryllium Copper, Gold Plated per MIL-G-45204.  
Length: 0.125" Min., Width: 0.040",  
Thickness 0.004" ± 0.002".

### Heat Sink:

Copper, Nickel Plated per QQ-N-290.

### Tolerance:

± 0.010" unless specified.



Note: The use of thermal mounting compound is recommended.

## Electrical Specifications

### Resistance Value:

10 - 1000 Ω or as required. Other values available upon request.

### Frequency Range:

DC - 6.0 GHz

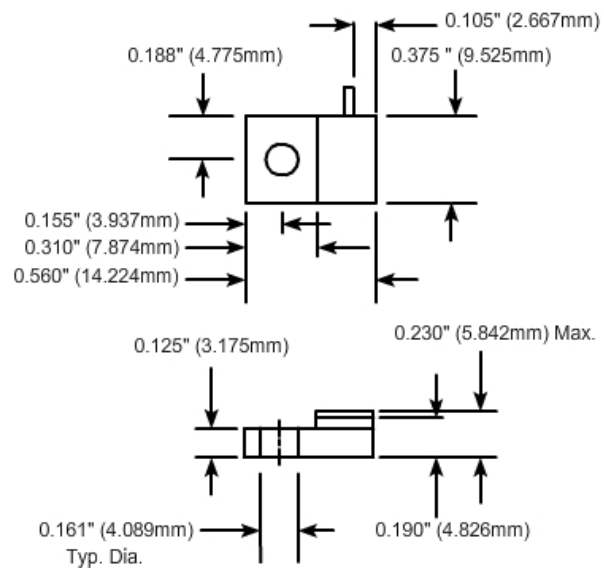
### VSWR (Max.):

1.25:1

### Standard Resistance Tolerance:

± 5% Other tolerances available upon request.

## Part Dimensions



# Component General, Inc.

## ■ Stripline Base Mounted Terminations

### ■ MECHANICAL SPECIFICATIONS



Heat Sink : Copper, Nickel Plated per QQ-N-290.

Substrate : Beryllium Oxide Ceramic.

Contact : Beryllium Copper, Gold Plated per MIL-G-45204.

Thickness : .004" ± .002".

Cover : Alumina Ceramic.

Tolerance : ± .010" unless specified

2 hole base mounted terminations product selection chart

CGI P/N	Power	Resistance (Ohms)	Standard Tolerance	Frequency Range	VSWR (Max.)
Note: Click a part number from the list below to see a data sheet for that part.					
<a href="#">CBT-10</a>	10 W	50	5 %	DC - 4.0 GHz	1:35:1
<a href="#">CBT-10-5</a>	10 W	50	5 %	DC - 8.0 GHz	1:25:1
<a href="#">CBT-40</a>	40 W	50	5 %	DC - 6.0 GHz	1:25:1
<a href="#">CBT-40-1</a>	40 W	50	5 %	DC - 6.0 GHz	1:25:1
<a href="#">CBT-75</a>	75 W	50	5 %	DC - 1.0 GHz 1.0 - 1.5 GHz	1:10:1 1:35.1
<a href="#">CBT-80</a>	80 W	50	5 %	DC - 6.0 GHz	1:25:1
<a href="#">CBT-125</a>	125 W	50	5 %	—	1:20:1 1:35.1
<a href="#">CBT-150</a>	150 W	50	5 %	DC - .5 GHz .5 - 1.0 GHz	1:20:1 1:35.1
<a href="#">CBT-150-1</a>	150 W	50	5 %	DC - 2.0 GHz	1:25:1
<a href="#">CBT-150-2</a>	150 W	50	5 %	DC - .5 GHz .5 - 1.0 GHz	1:20:1 1:35.1
<a href="#">CBT-150-3</a>	150 W	50	5 %	DC - 2.0 GHz	1:25:1
<a href="#">CBT-150-4</a>	150 W	50	5 %	DC - 2.0 GHz	1:25:1
<a href="#">CBT-150-5</a>	150 W	50	5 %	—	1:20:1 1:35.1

# Component General, Inc.

## ■ Stripline Base Mounted Terminations

### ■ MECHANICAL SPECIFICATIONS



Heat Sink : Copper, Nickel Plated per QQ-N-290.

Substrate : Beryllium Oxide Ceramic.

Contact : Beryllium Copper, Gold Plated per MIL-G-45204.

Thickness : .004"  $\pm$  .002".

Cover : Alumina Ceramic.

Tolerance :  $\pm$  .010" unless specified

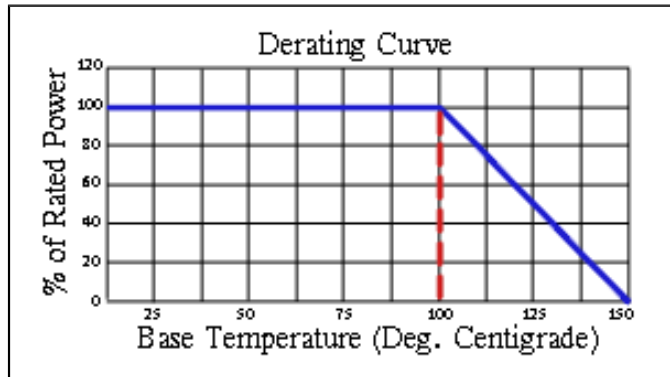
2 hole base mounted terminations product selection chart

CGI P/N	Power	Resistance (Ohms)	Standard Tolerance	Frequency Range	VSWR (Max.)
Note: Click a part number from the list below to see a data sheet for that part.					
<a href="#">CBT-250</a>	250 W	50	5 %	DC - 1.0 GHz 1.0 - 1.5 GHz	1:20:1 1:35.1
<a href="#">CBT-250-1</a>	250 W	50	5 %	DC - 1.0 GHz	1:25:1
<a href="#">CBT-250-2</a>	250 W	50	5 %	DC - .5 GHz .5 - 2.5 GHz	1:10:1 1:35.1
<a href="#">CBT-250-4</a>	250 W	50	5 %	DC - 2.0 GHz 2.0 - 2.4 GHz	1:10:1 1:20.1
<a href="#">CBT-250-5</a>	250 W	50	5 %	DC - 2.0 GHz 2.0 - 2.4 GHz	1:10:1 1:20.1
<a href="#">CBT-370</a>	370 W	50	5 %	DC - .75 GHz	1:35.1
<a href="#">CBT-400</a>	400 W	50	5 %	DC - .5 GHz .5 - .75 GHz	1:25:1 1:35.1

# Component General, Inc.

P/N: CBT-10

Stripline Base Mounted Terminations



## Mechanical Specifications

### Covers:

Alumina Ceramic.

### Substrate:

Beryllium Oxide Ceramic.

### Contact:

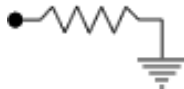
Beryllium Copper, Gold Plated per MIL-G-45204. Length: 0.125" Min., Width: 0.040", Thickness 0.004" ± 0.002".

### Heat Sink:

Copper, Nickel Plated per QQ-N-290.

### Tolerance:

± 0.010" unless specified.



Note: The use of thermal mounting compound is recommended.

## Electrical Specifications

### Resistance Value:

10 - 1000 Ω or as required. Other values available upon request.

### Frequency Range:

DC - 4.0 GHz

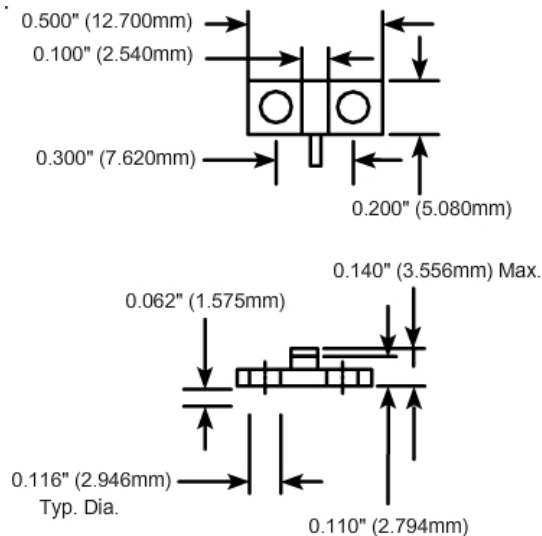
### VSWR (Max.):

1.35:1

### Standard Resistance Tolerance:

± 5% Other tolerances available upon request.

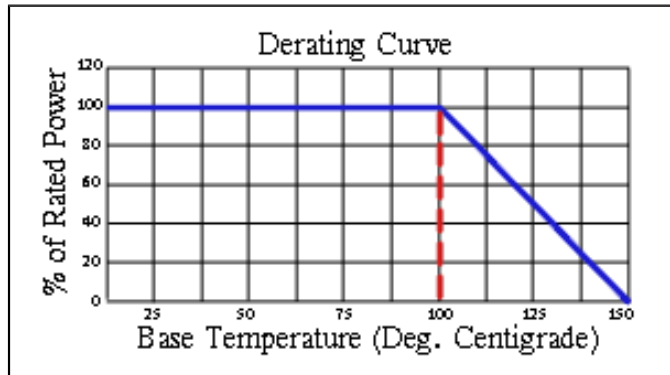
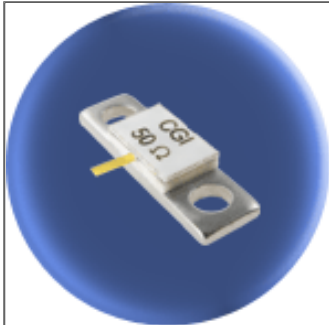
## Part Dimensions



# Component General, Inc.

P/N: CBT-40

Stripline Base Mounted Terminations



## Mechanical Specifications

### Covers:

Alumina Ceramic.

### Substrate:

Beryllium Oxide Ceramic.

### Contact:

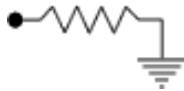
Beryllium Copper, Gold Plated per MIL-G-45204.  
Length: 0.125" Min., Width: 0.040",  
Thickness 0.004"  $\pm$  0.002".

### Heat Sink:

Copper, Nickel Plated per QQ-N-290.

### Tolerance:

$\pm$  0.010" unless specified.



Note: The use of thermal mounting compound is recommended.

## Electrical Specifications

### Resistance Value:

10 - 1000  $\Omega$  or as required. Other values available upon request.

### Frequency Range:

DC - 6.0 GHz

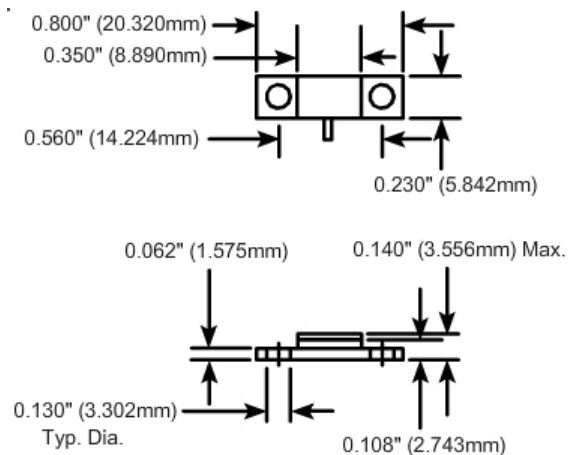
### VSWR (Max.):

1.25:1

### Standard Resistance Tolerance:

$\pm$  5% Other tolerances available upon request.

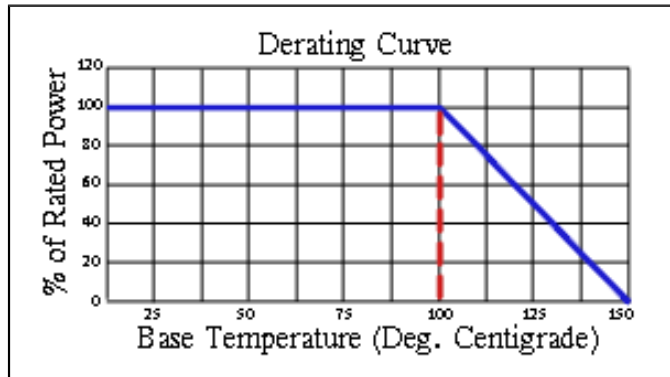
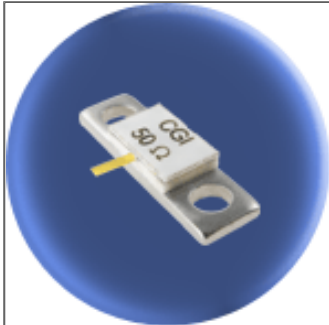
## Part Dimensions



# Component General, Inc.

P/N: CBT-40-1

Stripline Base Mounted Terminations



## Mechanical Specifications

### Covers:

Alumina Ceramic.

### Substrate:

Beryllium Oxide Ceramic.

### Contact:

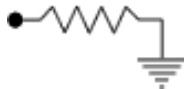
Beryllium Copper, Gold Plated per MIL-G-45204.  
Length: 0.125" Min., Width: 0.040",  
Thickness 0.004"  $\pm$  0.002".

### Heat Sink:

Copper, Nickel Plated per QQ-N-290.

### Tolerance:

$\pm$  0.010" unless specified.



Note: The use of thermal mounting compound is recommended.

## Electrical Specifications

### Resistance Value:

10 - 1000  $\Omega$  or as required. Other values available upon request.

### Frequency Range:

DC - 6.0 GHz

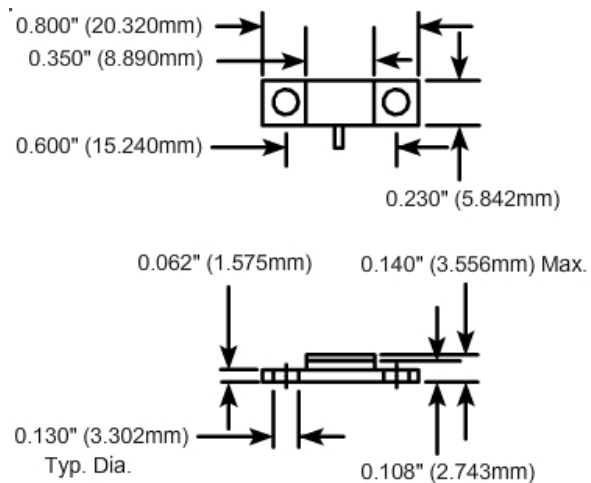
### VSWR (Max.):

1.25:1

### Standard Resistance Tolerance:

$\pm$  5% Other tolerances available upon request.

## Part Dimensions

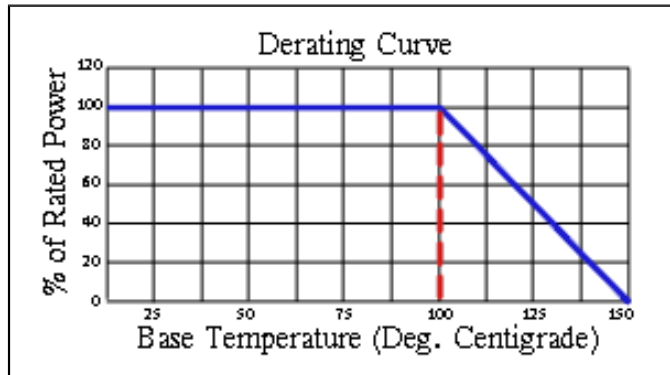




# Component General, Inc.

P/N: CBT-75

Stripline Base Mounted Terminations



## Mechanical Specifications

### Covers:

Alumina Ceramic.

### Substrate:

Beryllium Oxide Ceramic.

### Contact:

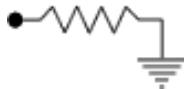
Beryllium Copper, Gold Plated per MIL-G-45204.  
Length 0.125" min., Width 0.250"  
Thickness 0.004" ± 0.002".

### Heat Sink:

Copper, Nickel Plated per QQ-N-290.

### Tolerance:

± 0.010" unless specified.



Note: The use of thermal mounting compound is recommended.

## Electrical Specifications

### Resistance Value:

10 - 1000 Ω or as required. Other values available upon request.

### Frequency Range:

DC - 1.0 GHz  
1.0 - 1.5 GHz

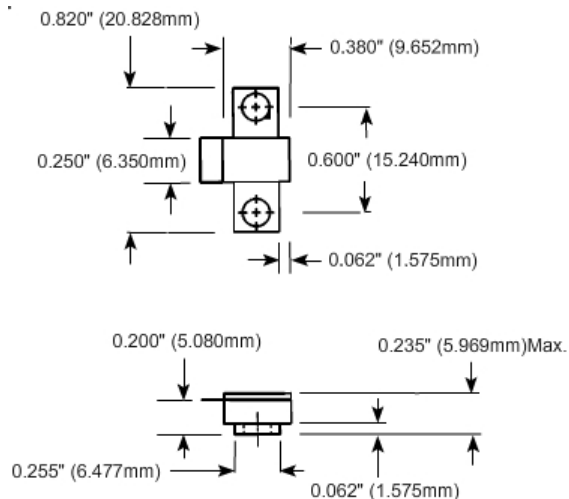
### VSWR (Max.):

1.10:1  
1.35:1

### Standard Resistance Tolerance:

± 5% Other tolerances available upon request.

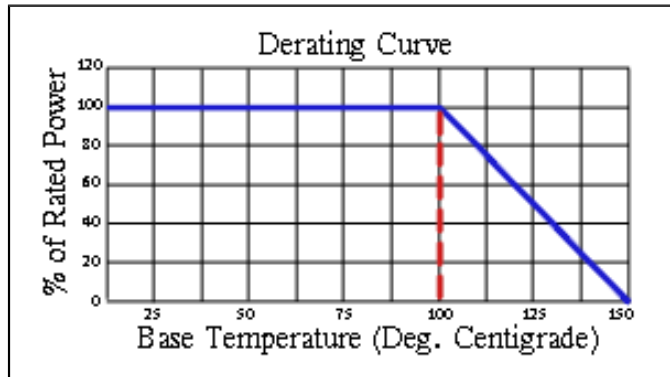
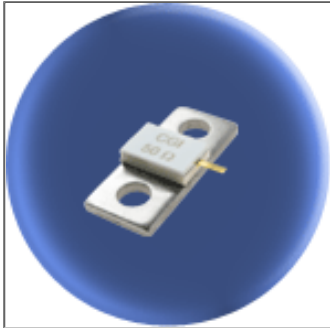
## Part Dimensions



# Component General, Inc.

P/N: CBT-80

Stripline Base Mounted Terminations



## Mechanical Specifications

### Covers:

Alumina Ceramic.

### Substrate:

Beryllium Oxide Ceramic.

### Contact:

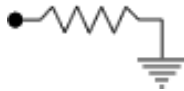
Beryllium Copper, Gold Plated per MIL-G-45204.  
Length: 0.125" Min., Width: 0.040",  
Thickness 0.004" ± 0.002".

### Heat Sink:

Copper, Nickel Plated per QQ-N-290.

### Tolerance:

± 0.010" unless specified.



Note: The use of thermal mounting compound is recommended.

## Electrical Specifications

### Resistance Value:

10 - 1000 Ω or as required. Other values available upon request.

### Frequency Range:

DC - 6.0 GHz

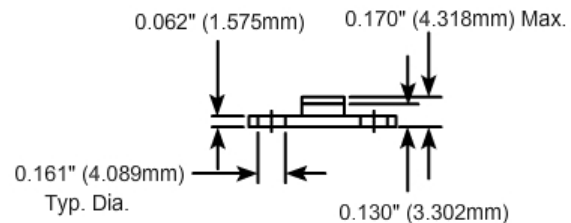
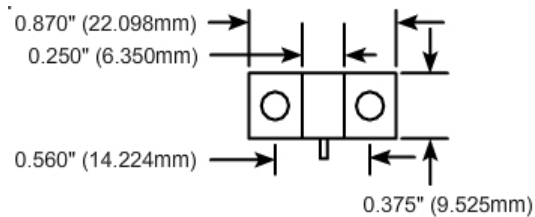
### VSWR (Max.):

1.25:1

### Standard Resistance Tolerance:

± 5% Other tolerances available upon request.

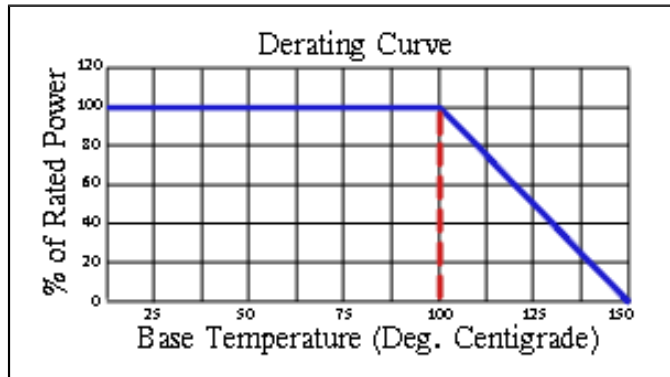
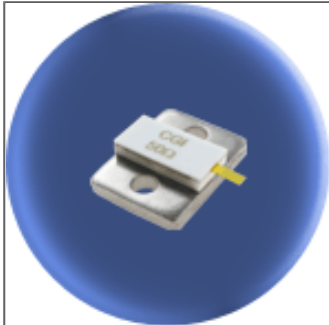
## Part Dimensions



# Component General, Inc.

P/N: CBT-125

Stripline Base Mounted Terminations



## Mechanical Specifications

### Covers:

Alumina Ceramic.

### Substrate:

Beryllium Oxide Ceramic.

### Contact:

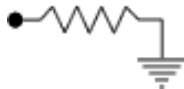
Beryllium Copper, Gold Plated per MIL-G-45204.  
Length: 0.125" Min., Width: 0.060",  
Thickness 0.004" ± 0.002".

### Heat Sink:

Copper, Nickel Plated per QQ-N-290.

### Tolerance:

± 0.010" unless specified.



Note: The use of thermal mounting compound is recommended.

## Electrical Specifications

### Resistance Value:

10 - 1000 Ω or as required. Other values available upon request.

### Frequency Range:

DC - 1.0 GHz  
1.0 - 2.0 GHz  
2.0 - 3.0 GHz

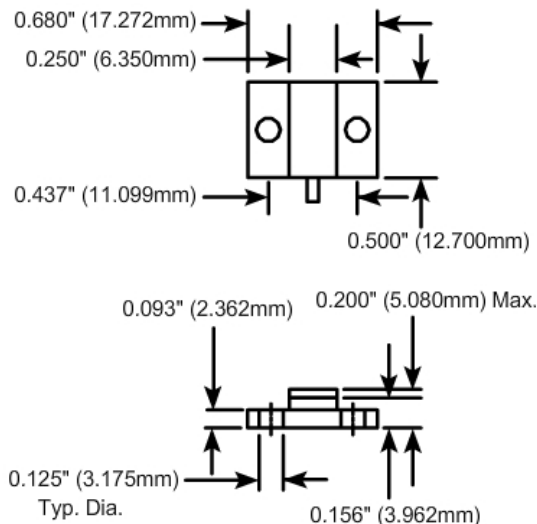
### VSWR (Max.):

1.15:1  
1.20:1  
1.25:1

### Standard Resistance Tolerance:

± 5% Other tolerances available upon request.

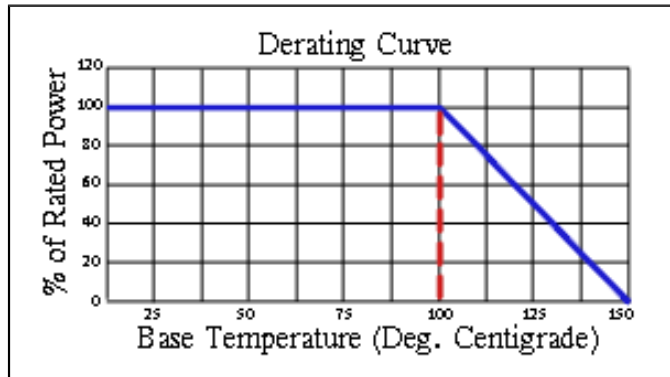
## Part Dimensions



# Component General, Inc.

P/N: CBT-150

## Stripline Base Mounted Terminations



### Mechanical Specifications

**Covers:**

Alumina Ceramic.

**Substrate:**

Beryllium Oxide Ceramic.

**Contact:**

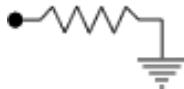
Beryllium Copper, Gold Plated per MIL-G-45204.  
Length: 0.125" Min., Width: 0.120",  
Thickness 0.004" ± 0.002".

**Heat Sink:**

Copper, Nickel Plated per QQ-N-290.

**Tolerance:**

± 0.010" unless specified.



Note: The use of thermal mounting compound is recommended.

### Electrical Specifications

**Resistance Value:**

10 - 1000 Ω or as required. Other values available upon request.

**Frequency Range:**

DC - .5 GHz  
.5 - 1.0 GHz

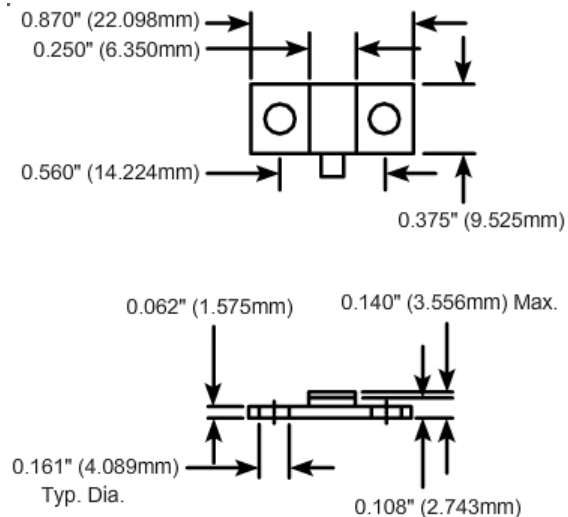
**VSWR (Max.):**

1.20:1  
1.35:1

**Standard Resistance Tolerance:**

± 5% Other tolerances available upon request.

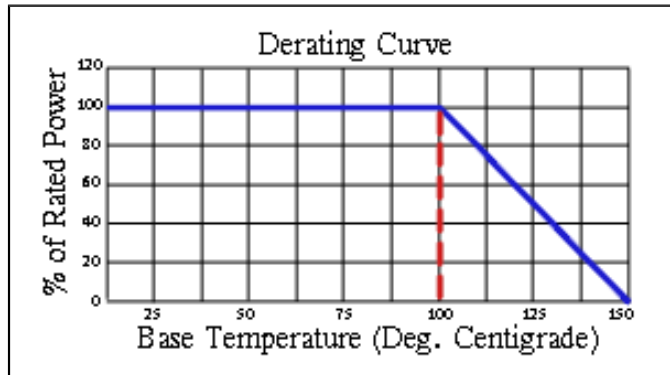
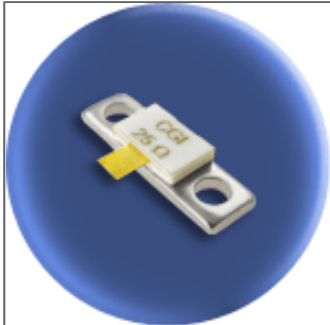
### Part Dimensions



# Component General, Inc.

P/N: CBT-150-1

Stripline Base Mounted Terminations



## Mechanical Specifications

### Covers:

Alumina Ceramic.

### Substrate:

Beryllium Oxide Ceramic.

### Contact:

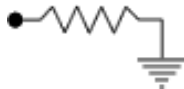
Beryllium Copper, Gold Plated per MIL-G-45204.  
Length: 0.125" Min., Width: 0.120",  
Thickness 0.004"  $\pm$  0.002".

### Heat Sink:

Copper, Nickel Plated per QQ-N-290.

### Tolerance:

$\pm$  0.010" unless specified.



Note: The use of thermal mounting compound is recommended.

## Electrical Specifications

### Resistance Value:

10 - 1000  $\Omega$  or as required. Other values available upon request.

### Frequency Range:

DC - 2.0 GHz

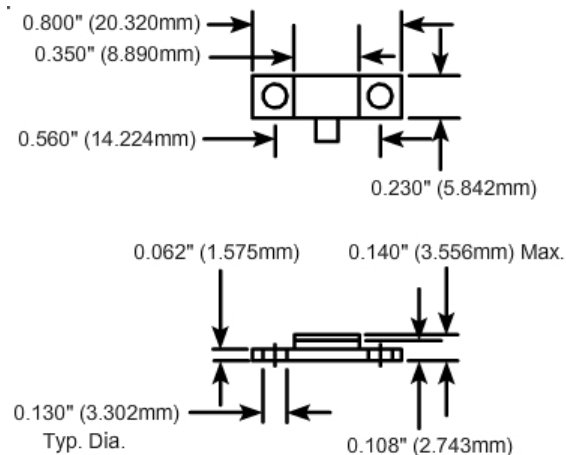
### VSWR (Max.):

1.25:1

### Standard Resistance Tolerance:

$\pm$  5% Other tolerances available upon request.

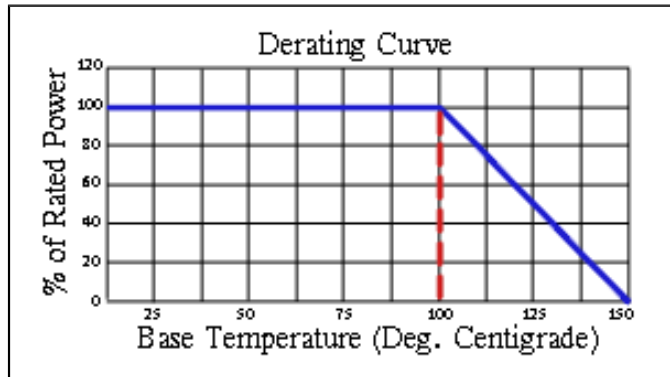
## Part Dimensions



# Component General, Inc.

P/N: CBT-150-2

Stripline Base Mounted Terminations



## Mechanical Specifications

### Covers:

Alumina Ceramic.

### Substrate:

Beryllium Oxide Ceramic.

### Contact:

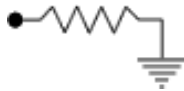
Beryllium Copper, Gold Plated per MIL-G-45204.  
Length: 0.125" Min., Width: 0.120",  
Thickness 0.004" ± 0.002".

### Heat Sink:

Copper, Nickel Plated per QQ-N-290.

### Tolerance:

± 0.010" unless specified.



Note: The use of thermal mounting compound is recommended.

## Electrical Specifications

### Resistance Value:

10 - 1000 Ω or as required. Other values available upon request.

### Frequency Range:

DC - .5 GHz  
.5 - 1.0 GHz

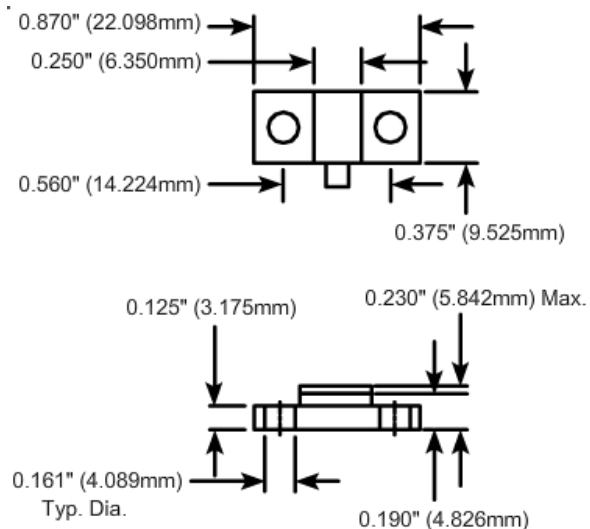
### VSWR (Max.):

1.20:1  
1.35:1

### Standard Resistance Tolerance:

± 5% Other tolerances available upon request.

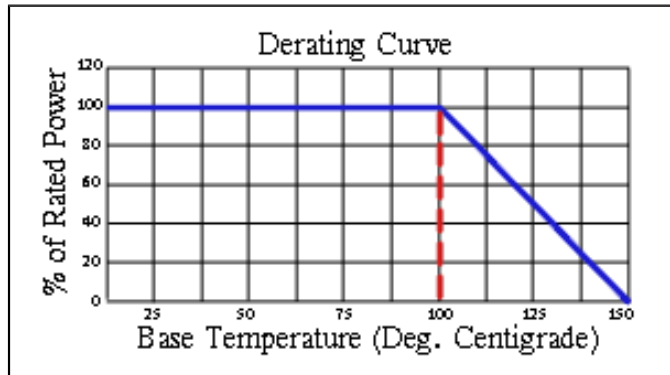
## Part Dimensions



# Component General, Inc.

P/N: CBT-150-3

Stripline Base Mounted Terminations



## Mechanical Specifications

### Covers:

Alumina Ceramic.

### Substrate:

Beryllium Oxide Ceramic.

### Contact:

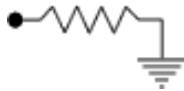
Beryllium Copper, Gold Plated per MIL-G-45204.  
Length: 0.125" Min., Width: 0.120",  
Thickness 0.004"  $\pm$  0.002".

### Heat Sink:

Copper, Nickel Plated per QQ-N-290.

### Tolerance:

$\pm$  0.010" unless specified.



Note: The use of thermal mounting compound is recommended.

## Electrical Specifications

### Resistance Value:

10 - 1000  $\Omega$  or as required. Other values available upon request.

### Frequency Range:

DC - 2.0 GHz

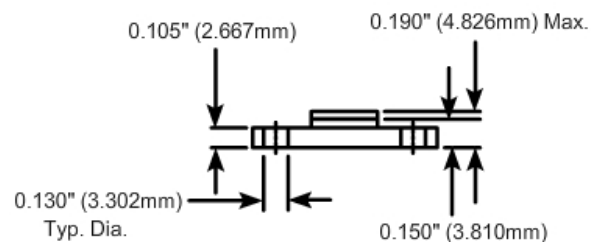
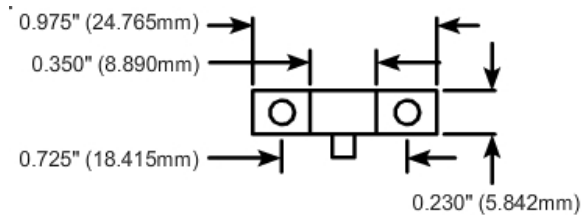
### VSWR (Max.):

1.25:1

### Standard Resistance Tolerance:

$\pm$  5% Other tolerances available upon request.

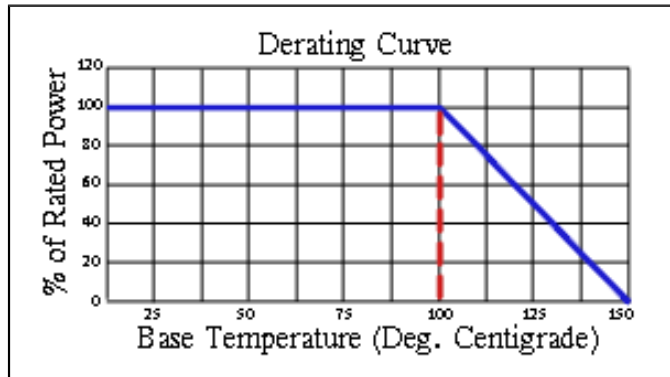
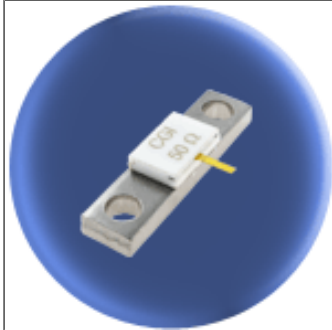
## Part Dimensions



# Component General, Inc.

P/N: CBT-150-4

Stripline Base Mounted Terminations



## Mechanical Specifications

### Covers:

Alumina Ceramic.

### Substrate:

Beryllium Oxide Ceramic.

### Contact:

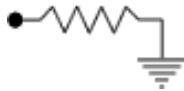
Beryllium Copper, Gold Plated per MIL-G-45204.  
Length: 0.125" Min., Width: 0.040",  
Thickness 0.004" ± 0.002".

### Heat Sink:

Copper, Nickel Plated per QQ-N-290.

### Tolerance:

± 0.010" unless specified.



Note: The use of thermal mounting compound is recommended.

## Electrical Specifications

### Resistance Value:

10 - 1000 Ω or as required. Other values available upon request.

### Frequency Range:

DC - 2.0 GHz

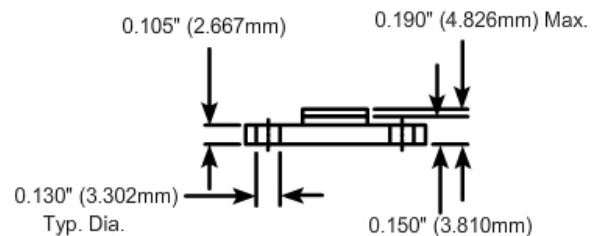
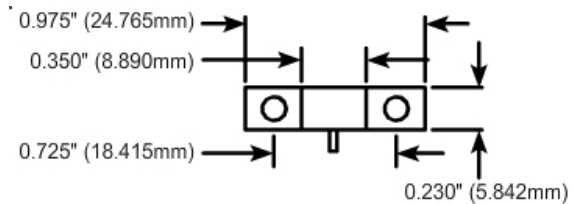
### VSWR (Max.):

1.25:1

### Standard Resistance Tolerance:

± 5% Other tolerances available upon request.

## Part Dimensions

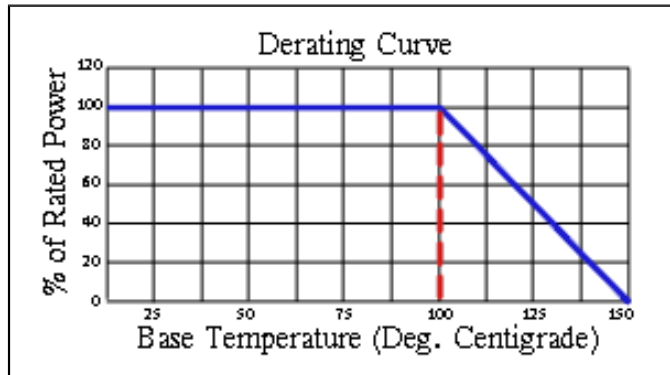
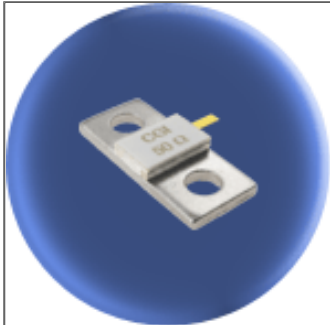




# Component General, Inc.

P/N: CBT-150-5

Stripline Base Mounted Terminations



## Mechanical Specifications

### Covers:

Alumina Ceramic.

### Substrate:

Beryllium Oxide Ceramic.

### Contact:

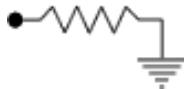
Beryllium Copper, Gold Plated per MIL-G-45204. Length: 0.125" Min., Width: 0.060", Thickness 0.004" ± 0.002".

### Heat Sink:

Copper, Nickel Plated per QQ-N-290.

### Tolerance:

± 0.010" unless specified.



Note: The use of thermal mounting compound is recommended.

## Electrical Specifications

### Resistance Value:

10 - 1000 Ω or as required. Other values available upon request.

### Frequency Range:

DC - 1.0 GHz  
1.0 - 2.0 GHz  
2.0 - 3.0 GHz

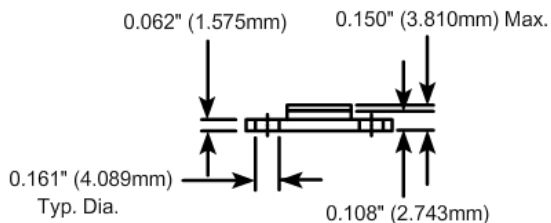
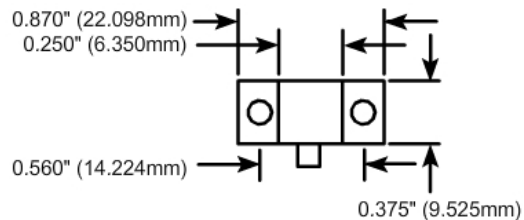
### VSWR (Max.):

1.08:1  
1.09:1  
1.15:1

### Standard Resistance Tolerance:

± 5% Other tolerances available upon request.

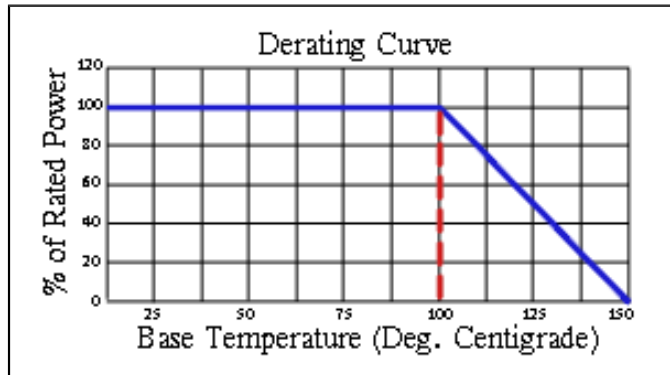
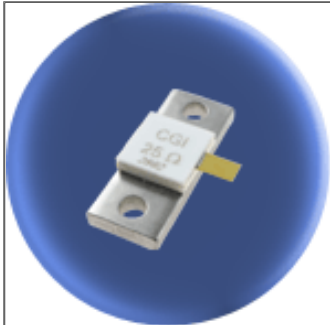
## Part Dimensions



# Component General, Inc.

P/N: CBT-250

Stripline Base Mounted Terminations



## Mechanical Specifications

### Covers:

Alumina Ceramic.

### Substrate:

Beryllium Oxide Ceramic.

### Contact:

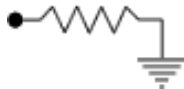
Beryllium Copper, Gold Plated per MIL-G-45204.  
Length: 0.125" Min., Width: 0.120",  
Thickness 0.004" ± 0.002".

### Heat Sink:

Copper, Nickel Plated per QQ-N-290.

### Tolerance:

± 0.010" unless specified.



Note: The use of thermal mounting compound is recommended.

## Electrical Specifications

### Resistance Value:

10 - 1000 Ω or as required. Other values available upon request.

### Frequency Range:

DC - 1.0 GHz  
1.0 - 1.5 GHz

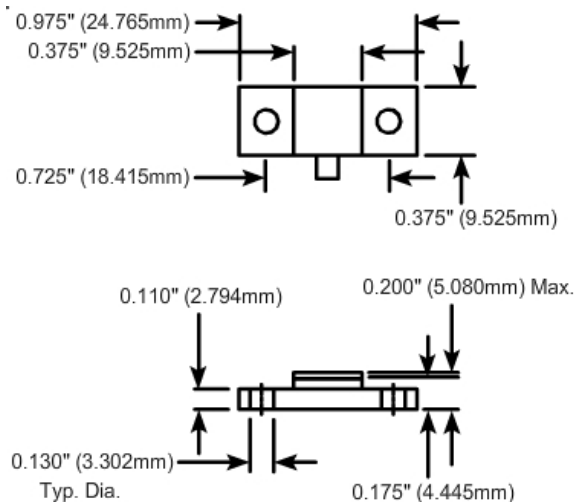
### VSWR (Max.):

1.20:1  
1.35:1

### Standard Resistance Tolerance:

± 5% Other tolerances available upon request.

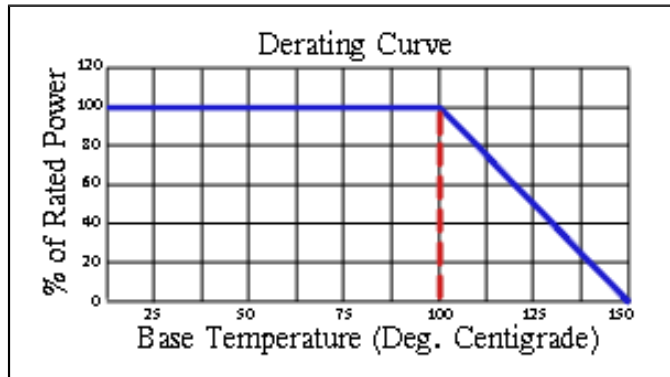
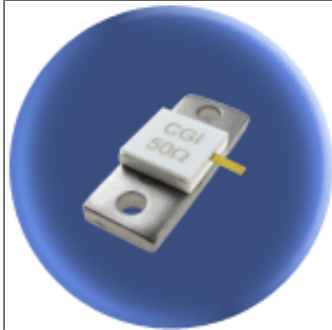
## Part Dimensions



# Component General, Inc.

P/N: CBT-250-1

## Stripline Base Mounted Terminations



### Mechanical Specifications

#### Covers:

Alumina Ceramic.

#### Substrate:

Beryllium Oxide Ceramic.

#### Contact:

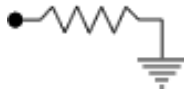
Beryllium Copper, Gold Plated per MIL-G-45204.  
Length: 0.125" Min., Width: 0.060",  
Thickness 0.004" ± 0.002".

#### Heat Sink:

Copper, Nickel Plated per QQ-N-290.

#### Tolerance:

± 0.010" unless specified.



Note: The use of thermal mounting compound is recommended.

### Electrical Specifications

#### Resistance Value:

10 - 1000 Ω or as required. Other values available upon request.

#### Frequency Range:

DC - 1.0 GHz

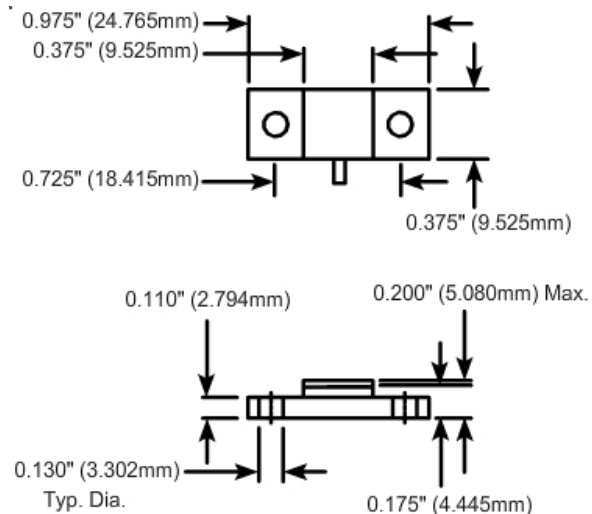
#### VSWR (Max.):

1.25:1

#### Standard Resistance Tolerance:

± 5% Other tolerances available upon request.

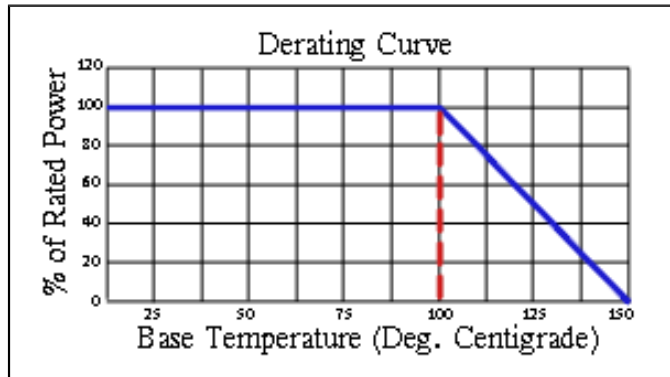
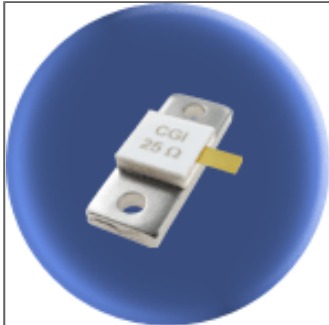
### Part Dimensions



# Component General, Inc.

P/N: CBT-250-2

Stripline Base Mounted Terminations



## Mechanical Specifications

### Covers:

Alumina Ceramic.

### Substrate:

Beryllium Oxide Ceramic.

### Contact:

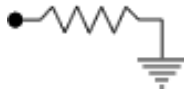
Beryllium Copper, Gold Plated per MIL-G-45204.  
Length: 0.125" Min., Width: 0.120",  
Thickness 0.004" ± 0.002".

### Heat Sink:

Copper, Nickel Plated per QQ-N-290.

### Tolerance:

± 0.010" unless specified.



Note: The use of thermal mounting compound is recommended.

## Electrical Specifications

### Resistance Value:

10 - 1000 Ω or as required. Other values available upon request.

### Frequency Range:

DC - .5 GHz  
.5 - 2.5 GHz

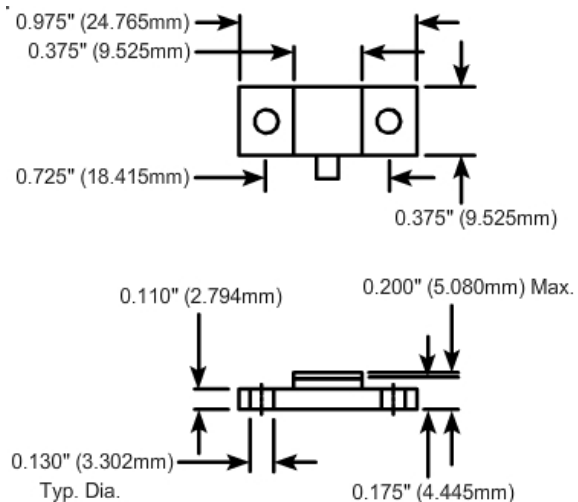
### VSWR (Max.):

1.10:1  
1.35:1

### Standard Resistance Tolerance:

± 5% Other tolerances available upon request.

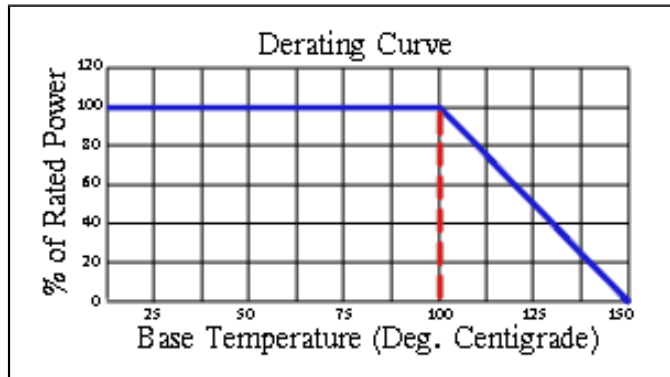
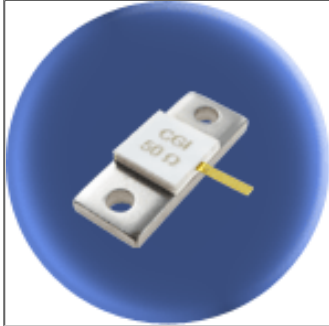
## Part Dimensions



# Component General, Inc.

P/N: CBT-250-4

Stripline Base Mounted Terminations



## Mechanical Specifications

### Covers:

Alumina Ceramic.

### Substrate:

Beryllium Oxide Ceramic.

### Contact:

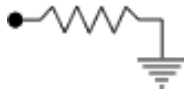
Beryllium Copper, Gold Plated per MIL-G-45204.  
Length: 0.200" Min., Width: 0.060",  
Thickness 0.004" ± 0.002".

### Heat Sink:

Copper, Nickel Plated per QQ-N-290.

### Tolerance:

± 0.010" unless specified.



Note: The use of thermal mounting compound is recommended.

## Electrical Specifications

### Resistance Value:

10 - 1000 Ω or as required. Other values available upon request.

### Frequency Range:

DC - 2.0 GHz  
2.0 - 2.4 GHz

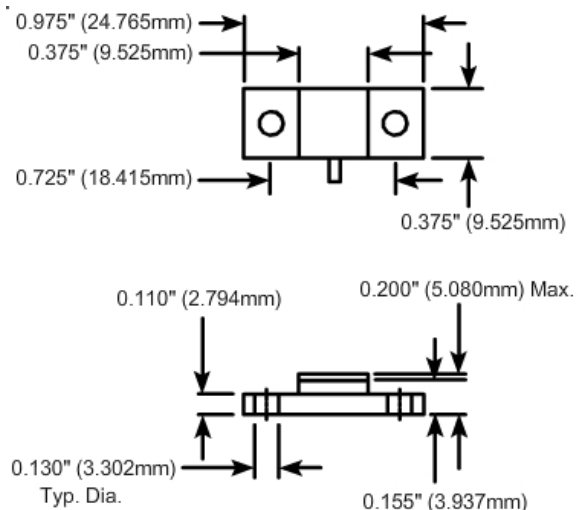
### VSWR (Max.):

1.10:1  
1.20:1

### Standard Resistance Tolerance:

± 5% Other tolerances available upon request.

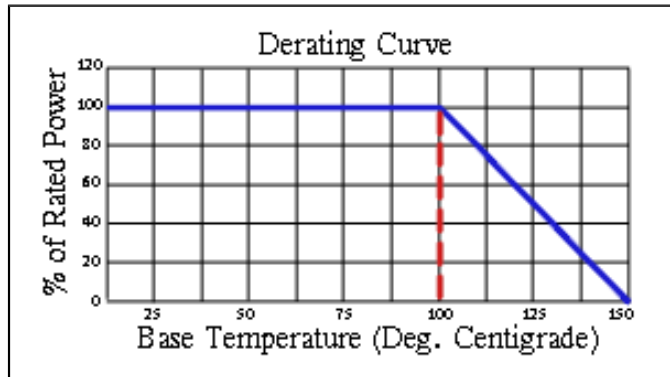
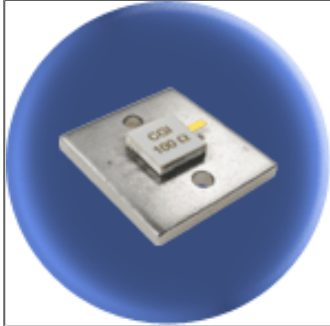
## Part Dimensions



# Component General, Inc.

P/N: CBT-250-5

Stripline Base Mounted Terminations



## Mechanical Specifications

### Covers:

Alumina Ceramic.

### Substrate:

Beryllium Oxide Ceramic.

### Contact:

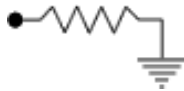
Beryllium Copper, Gold Plated per MIL-G-45204.  
Length: 0.200" Min., Width: 0.060",  
Thickness 0.004" ± 0.002".

### Heat Sink:

Copper, Nickel Plated per QQ-N-290.

### Tolerance:

± 0.010" unless specified.



Note: The use of thermal mounting compound is recommended.

## Electrical Specifications

### Resistance Value:

10 - 1000 Ω or as required. Other values available upon request.

### Frequency Range:

DC - 2.0 GHz  
2.0 - 2.4 GHz

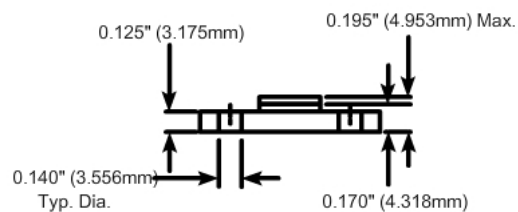
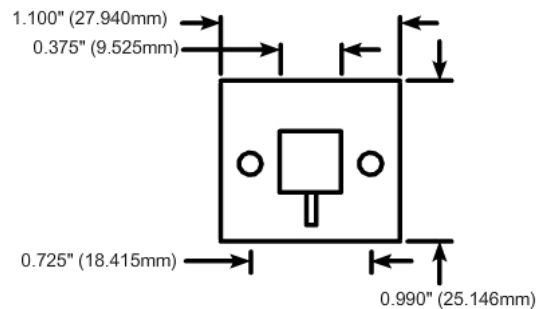
### VSWR (Max.):

1.10:1  
1.20:1

### Standard Resistance Tolerance:

± 5% Other tolerances available upon request.

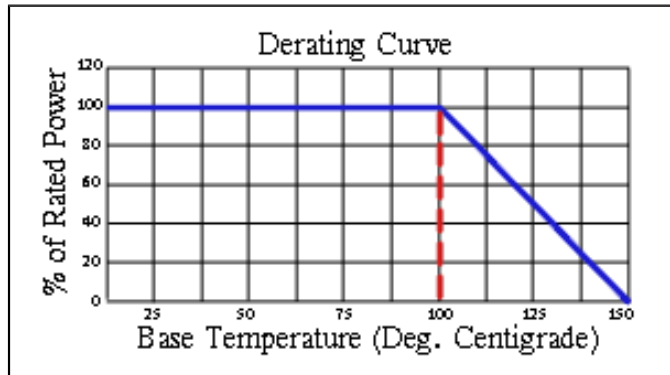
## Part Dimensions



# Component General, Inc.

P/N: CBT-370

## Stripline Base Mounted Terminations



### Mechanical Specifications

**Covers:**

Alumina Ceramic.

**Substrate:**

Beryllium Oxide Ceramic.

**Contact:**

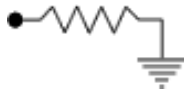
Beryllium Copper, Gold Plated per MIL-G-45204.  
Length: 0.125" Min., Width: 0.120",  
Thickness 0.004" ± 0.002".

**Heat Sink:**

Copper, Nickel Plated per QQ-N-290.

**Tolerance:**

± 0.010" unless specified.



Note: The use of thermal mounting compound is recommended.

### Electrical Specifications

**Resistance Value:**

10 - 1000 Ω or as required. Other values available upon request.

**Frequency Range:**

DC - .75 GHz

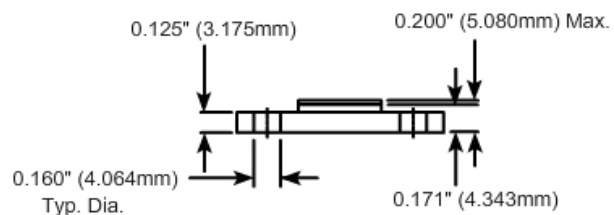
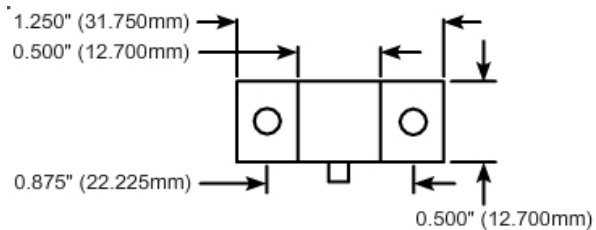
**VSWR (Max.):**

1.35:1

**Standard Resistance Tolerance:**

± 5% Other tolerances available upon request.

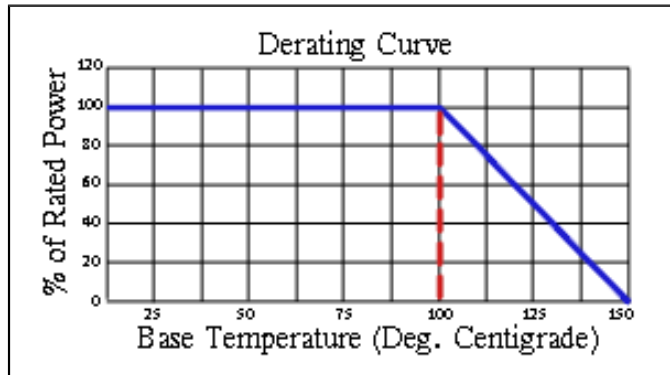
### Part Dimensions



# Component General, Inc.

P/N: CBT-400

Stripline Base Mounted Terminations



## Mechanical Specifications

### Covers:

Alumina Ceramic.

### Substrate:

Beryllium Oxide Ceramic.

### Contact:

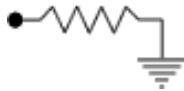
Beryllium Copper, Gold Plated per MIL-G-45204.  
Length: 0.250" Min., Width: 0.120",  
Thickness 0.004" ± 0.002".

### Heat Sink:

Copper, Nickel Plated per QQ-N-290.

### Tolerance:

± 0.010" unless specified.



Note: The use of thermal mounting compound is recommended.

## Electrical Specifications

### Resistance Value:

10 - 1000 Ω or as required. Other values available upon request.

### Frequency Range:

DC - .5 GHz  
.5 - .75 GHz

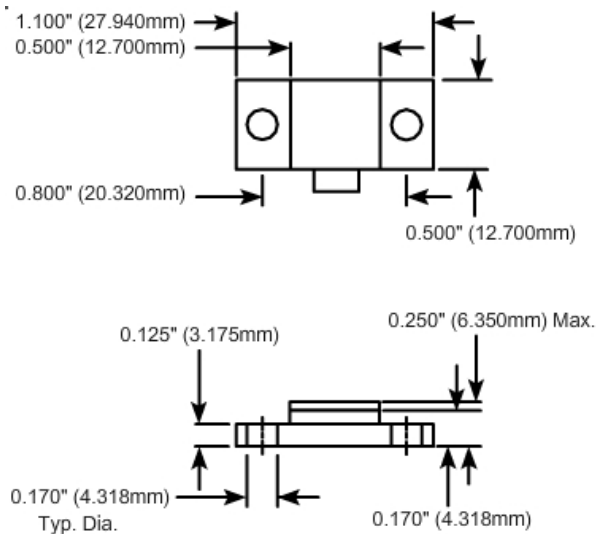
### VSWR (Max.):

1.25:1  
1.35:1

### Standard Resistance Tolerance:

± 5% Other tolerances available upon request.

## Part Dimensions





# Component General, Inc.

## ■ Stripline Base Mounted Terminations

### ■ MECHANICAL SPECIFICATIONS



Heat Sink : Copper, Nickel Plated per QQ-N-290.

Substrate : Beryllium Oxide Ceramic.

Contact : Beryllium Copper, Gold Plated per MIL-G-45204.

Thickness : .004"  $\pm$  .002".

Cover : Alumina Ceramic.

Tolerance :  $\pm$  .010" unless specified

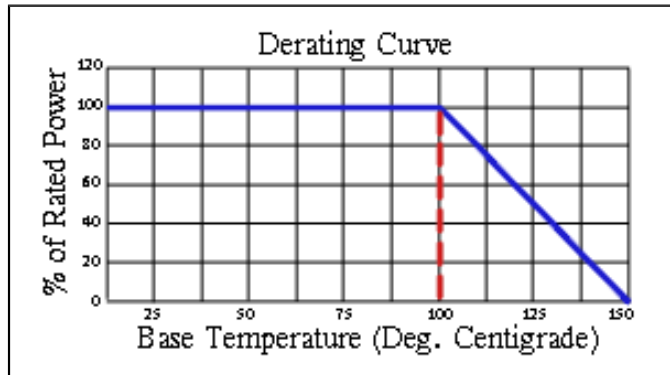
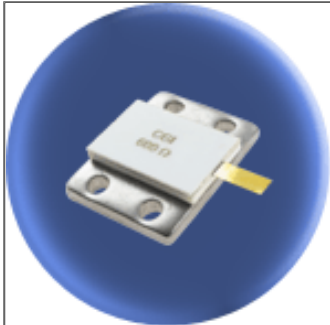
4 hole base mounted terminations product selection chart

CGI P/N	Power	Resistance (Ohms)	Standard Tolerance	Frequency Range	VSWR (Max.)
Note: Click a part number from the list below to see a data sheet for that part.					
<a href="#">CBT-250-3</a>	250 W	10 - 1000	5 %	DC - .1 GHz .1 - .5 GHz .5 - 1.0 GHz	1:05:1 1.10:1 1.20:1
<a href="#">CBT-700</a>	700 W	10 - 1000	5 %	DC - .5 GHz .5 - .65 GHz .65 - .89 GHz	1:15:1 1.25:1 1.50:1
<a href="#">CBT-800</a>	800 W	10 - 1000	5 %	DC - .2 GHz .2 - .5 GHz	1:25:1 1.50:1

# Component General, Inc.

P/N: CBT-250-3

Stripline Base Mounted Terminations



## Mechanical Specifications

### Covers:

Alumina Ceramic.

### Substrate:

Beryllium Oxide Ceramic.

### Contact:

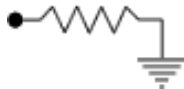
Beryllium Copper, Gold Plated per MIL-G-45204.  
Length: 0.300" Min., Width: 0.120",  
Thickness 0.004" ± 0.002".

### Heat Sink:

Copper, Nickel Plated per QQ-N-290.

### Tolerance:

± 0.010" unless specified.



Note: The use of thermal mounting compound is recommended.

## Electrical Specifications

### Resistance Value:

10 - 1000 Ω or as required. Other values available upon request.

### Frequency Range:

DC - .1 GHz  
.1 - .5 GHz  
.5 - 1.0 GHz

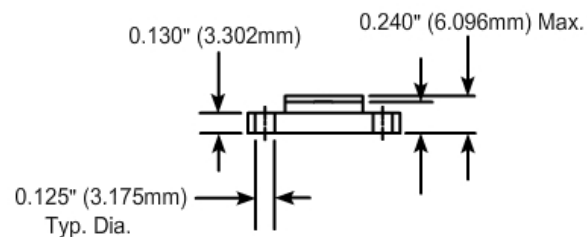
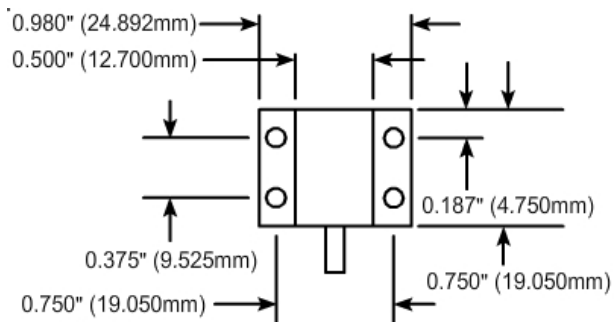
### VSWR (Max.):

1.05:1  
1.10:1  
1.20:1

### Standard Resistance Tolerance:

± 5% Other tolerances available upon request.

## Part Dimensions

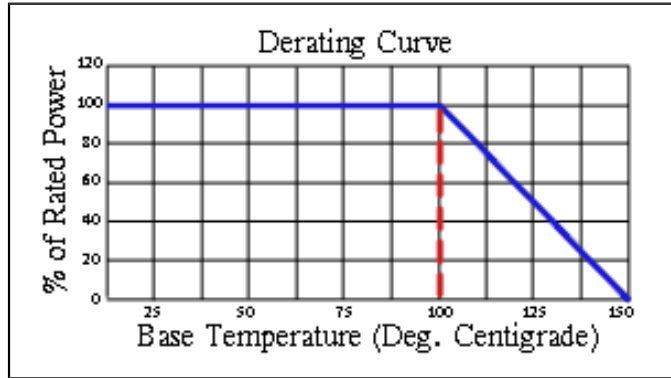
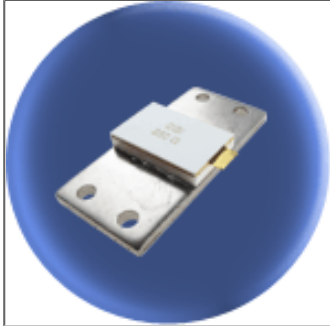


Note: The use of thermal mounting compound is recommended.

# Component General, Inc.

P/N: CBT-700

Stripline Base Mounted Terminations



## Mechanical Specifications

### Covers:

Alumina Ceramic.

### Substrate:

Beryllium Oxide Ceramic.

### Contact:

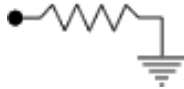
Beryllium Copper, Gold Plated per MIL-G-45204.  
Length: 0.125" Min., Width: 0.250",  
Thickness 0.004" ± 0.002".

### Heat Sink:

Copper, Nickel Plated per QQ-N-290.

### Tolerance:

± 0.010" unless specified.



Note: The use of thermal mounting compound is recommended.

## Electrical Specifications

### Resistance Value:

10 - 1000 Ω or as required. Other values available upon request.

### Frequency Range:

DC - .5 GHz  
.5 - .65 GHz  
.65 - .89 GHz

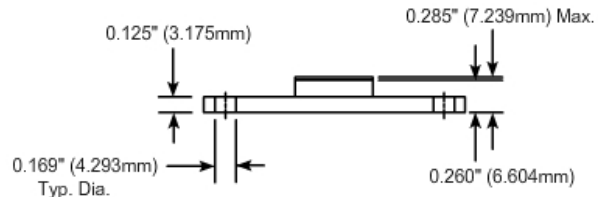
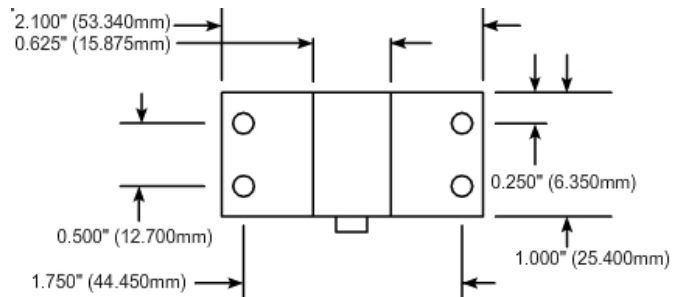
### VSWR (Max.):

1.15:1  
1.25:1  
1.50:1

### Standard Resistance Tolerance:

± 5% Other tolerances available upon request.

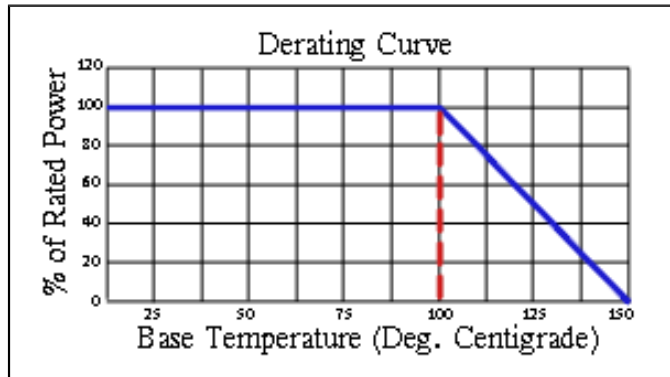
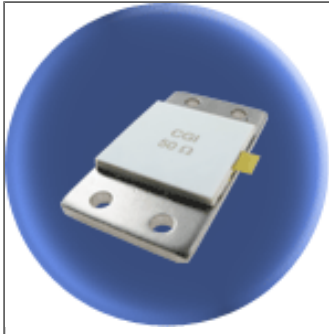
## Part Dimensions



# Component General, Inc.

P/N: CBT-800

## Stripline Base Mounted Terminations



### Mechanical Specifications

**Covers:**

Alumina Ceramic.

**Substrate:**

Beryllium Oxide Ceramic.

**Contact:**

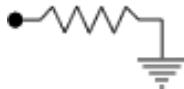
Beryllium Copper, Gold Plated per MIL-G-45204.  
Length: 0.125" Min., Width: 0.250",  
Thickness 0.004" ± 0.002".

**Heat Sink:**

Copper, Nickel Plated per QQ-N-290.

**Tolerance:**

± 0.010" unless specified.



Note: The use of thermal mounting compound is recommended.

### Electrical Specifications

**Resistance Value:**

10 - 1000 Ω or as required. Other values available upon request.

**Frequency Range:**

DC - .2 GHz  
.2 - .5 GHz

**VSWR (Max.):**

1.25:1  
1.50:1

**Standard Resistance Tolerance:**

± 5% Other tolerances available upon request.

### Part Dimensions

